

## S100G (S100 calcium binding protein G) Antibody

Mouse Monoclonal Antibody [Clone S100G/7517]

Catalog No	Format	Size
795-MSM4-P0	Purified Ab with BSA and Azide at 200ug/ml	20 ug
795-MSM4-P1	Purified Ab with BSA and Azide at 200ug/ml	100 ug
795-MSM4-P1ABX	Purified Ab WITHOUT BSA and Azide at 1.0mg/ml	100 ug

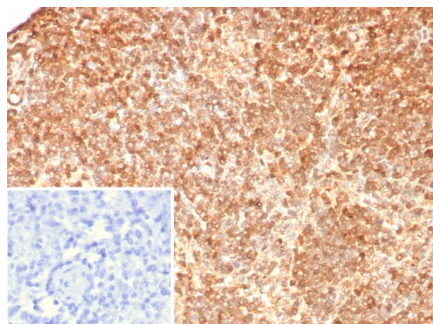
Applications	Tested Dillution	Note
Immunohistochemistry (IHC)	1-2ug/ml	30 min at RT. Staining of formalin-fixed tissues requires heating tissue sections in 10mM Tris with 1mM EDTA, pH 9.0, for 45 min at 95°C followed by cooling at RT for 20 minutes

### Product Details

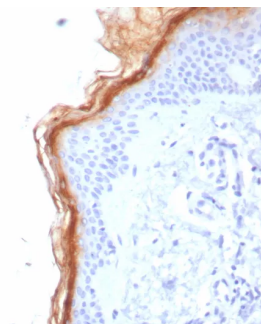
Clone	S100G/7517
Gene Name	S100G
Immunogen	Recombinant fragment (around aa1-79) of human S100G protein (exact sequence is proprietary)
Host	Mouse
Clonality	Monoclonal
Isotype / Light Chain	IgG2 / Kappa
Mol. Weight of Antigen	9kDa
Cellular Localization	Cytoplasm.
Species Reactivity	Human
Positive Control	Human intestine stomach or kidney.

\*Optimal dilution for a specific application should be determined.

### Product Images for S100G (S100 calcium binding protein G) Antibody



Formalin-fixed, paraffin-embedded human lymph node stained with S100G Mouse Monoclonal Antibody (S100G/7517). Inset: PBS instead of primary antibody; secondary only negative control.



Formalin-fixed, paraffin-embedded human skin stained with S100G Mouse Monoclonal Antibody (S100G/7517). HIER: Tris/EDTA, pH9.0, 45min. 2°C: HRP-polymer, 30min. DAB, 5min.

### Specificity & Comments

Calgizzarin is a Ca<sup>2+</sup>-binding protein of the S100 family. The proteins comprising the S-100 protein family have two EF-hand structures per molecule of protein. Expression of these family members occurs primarily in neurons or retinal photoreceptor cells, and may also be involved in a wide variety of cellular functions including cell growth, cell-cell communication, energy metabolism and intracellular signal transduction. They have also been linked to various pathologies, including Alzheimer's disease, schizophrenia and cancer. Calgizzarin is highly expressed in lung tissue and is also expressed in kidney, liver, brain, heart and smooth muscle. It is an important androgen-responsive protein produced by Sertoli cells and might play a role in spermatogenesis regulation.

### Supplied As

200ug/ml of Ab purified from Bioreactor Concentrate by Protein A/G. Prepared in 10mM PBS with 0.05% BSA & 0.05% azide. Also available WITHOUT BSA & azide at 1.0mg/ml.

### Storage and Stability

Antibody with azide - store at 2 to 8°C. Antibody without azide - store at -20 to -80°C. Antibody is stable for 24 months. Non-hazardous. No MSDS required.

### **Limitations and Warranty**

This antibody is available for research use only and is not approved for use in diagnosis. There are no warranties, expressed or implied, which extend beyond this description. Company is not liable for any personal injury or economic loss resulting from this product.

---