

## Cyclin D1 (G1-Cyclin & Mantle Cell Lymphoma Marker) Antibody

Mouse Monoclonal Antibody [Clone CCND1/7868]

Catalog No	Format	Size
595-MSM14-P0	Purified Ab with BSA and Azide at 200ug/ml	20 ug
595-MSM14-P1	Purified Ab with BSA and Azide at 200ug/ml	100 ug
595-MSM14-P1ABX	Purified Ab WITHOUT BSA and Azide at 1.0mg/ml	100 ug

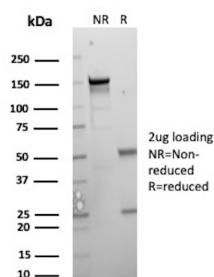
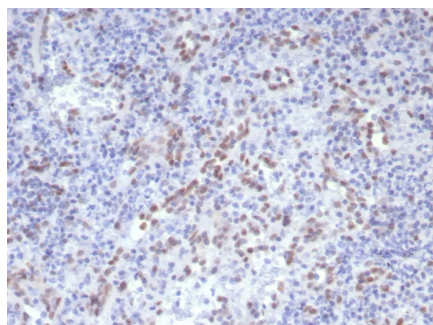
Applications	Tested Dillution	Note
Immunohistochemistry (IHC)	1-2ug/ml	30 min at RT. Staining of formalin-fixed tissues requires heating tissue sections in 10mM Tris with 1mM EDTA, pH 9.0, for 45 min at 95°C followed by cooling at RT for 20 minutes
Western Blot (WB)	2-4ug/ml	

### Product Details

<b>Clone</b>	CCND1/7868
<b>Gene Name</b>	CCND1
<b>Immunogen</b>	Recombinant fragment (around aa200-295) of Cyclin D1 protein (exact sequence is proprietary)
<b>Host</b>	Mouse
<b>Clonality</b>	Monoclonal
<b>Isotype / Light Chain</b>	IgG2a / Kappa
<b>Mol. Weight of Antigen</b>	36kDa
<b>Cellular Localization</b>	Nucleus.
<b>Species Reactivity</b>	Human
<b>Positive Control</b>	breast or bladder carcinomas.   Human mantle cell lymphoma, A431, HeLa.

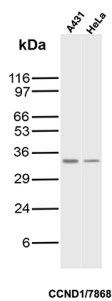
\*Optimal dilution for a specific application should be determined.

### Product Images for Cyclin D1 (G1-Cyclin & Mantle Cell Lymphoma Marker) Antibody

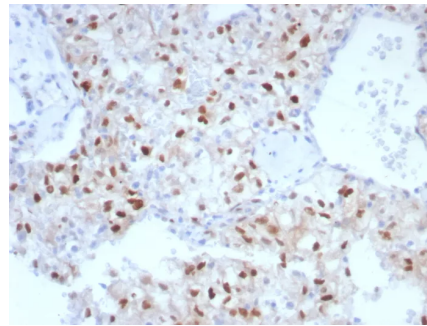


Formalin-fixed, paraffin-embedded human spleen stained Cyclin D1 Mouse Monoclonal Antibody (CCND1/7868). HIER: Tris/EDTA, pH9.0, 45min. 2°C: HRP-polymer, 30min. DAB, 5min.

SDS-PAGE Analysis of Purified CCND1 Mouse Monoclonal Antibody(CCND1/7868). Confirmation of Purity and Integrity of Antibody



Western blot analysis of A431 and HeLa cell lysates using Cyclin D1 Mouse Monoclonal Antibody (CCND1/7868).



Formalin-fixed, paraffin-embedded human renal cell carcinoma stained Cyclin D1 Mouse Monoclonal Antibody (CCND1/7868). HIER: Tris/EDTA, pH9.0, 45min. 2°C: HRP-polymer, 30min. DAB, 5min.

### Specificity & Comments

Recognizes a protein of 36kDa, identified as cyclin D1. Cyclin D1, one of the key cell cycle regulators, is a putative proto-oncogene overexpressed in a wide variety of human neoplasms. This antibody neutralizes the activity of cyclin D1 in vivo. About 60% of mantle cell lymphomas (MCL) contain a t(11; 14)(q13; q32) translocation resulting in over-expression of cyclin D1. This antibody is useful in identifying mantle cell lymphomas (cyclin D1 positive) from CLL/SLL and follicular lymphomas (cyclin D1 negative). Occasionally, hairy cell leukemia and plasma cell myeloma weakly express Cyclin D1.

### Supplied As

200ug/ml of Ab purified from Bioreactor Concentrate by Protein A/G. Prepared in 10mM PBS with 0.05% BSA & 0.05% azide. Also available WITHOUT BSA & azide at 1.0mg/ml.

### Storage and Stability

Antibody with azide - store at 2 to 8°C. Antibody without azide - store at -20 to -80°C. Antibody is stable for 24 months. Non-hazardous. No MSDS required.

### Research Areas

AKT Signaling, Bladder Cancer, Breast Cancer, Cardiovascular, Colon Cancer, Cytokine Signaling, Immunology, Infectious Disease, Lung Cancer, Nuclear Marker, Signal Transduction, Transcription Factors

### Limitations and Warranty

This antibody is available for research use only and is not approved for use in diagnosis. There are no warranties, expressed or implied, which extend beyond this description. Company is not liable for any personal injury or economic loss resulting from this product.