

## CD107a / Lysosomal associated membrane protein 1 (LAMP1) Antibody

Mouse Monoclonal Antibody [Clone LAMP1/7457]

Catalog No	Format	Size
3916-MSM2-P0	Purified Ab with BSA and Azide at 200ug/ml	20 ug
3916-MSM2-P1	Purified Ab with BSA and Azide at 200ug/ml	100 ug
3916-MSM2-P1ABX	Purified Ab WITHOUT BSA and Azide at 1.0mg/ml	100 ug

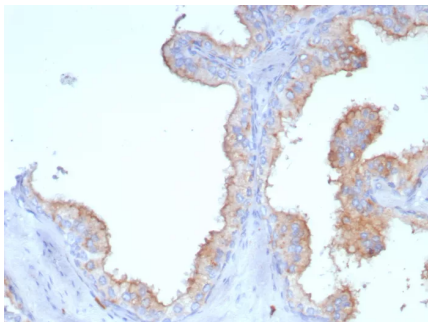
Applications	Tested Dillution	Note
Immunohistochemistry (IHC)	1-2ug/ml	30 min at RT. Staining of formalin-fixed tissues requires heating tissue sections in 10mM Tris with 1mM EDTA, pH 9.0, for 45 min at 95°C followed by cooling at RT for 20 minutes

### Product Details

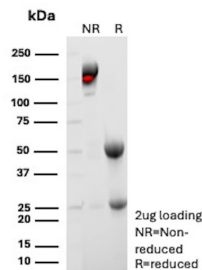
<b>Clone</b>	LAMP1/7457
<b>Gene Name</b>	LAMP1
<b>Immunogen</b>	Recombinant fragment (around aa200-400) of human LAMP1 protein (exact sequence is proprietary)
<b>Host</b>	Mouse
<b>Clonality</b>	Monoclonal
<b>Isotype / Light Chain</b>	IgG1 / Kappa
<b>Mol. Weight of Antigen</b>	120 kDa
<b>Cellular Localization</b>	Cytoplasm. Cell membrane.
<b>Species Reactivity</b>	Human
<b>Positive Control</b>	Human tonsil kidney or prostate. Placenta

\*Optimal dilution for a specific application should be determined.

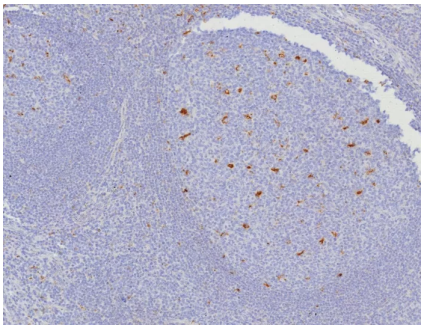
### Product Images for CD107a / Lysosomal associated membrane protein 1 (LAMP1) Antibody



Formalin-fixed, paraffin-embedded human prostate stained with CD107a / LAMP1 Mouse Monoclonal Antibody (LAMP1/7457). HIER: Tris/EDTA, pH9.0, 45min. 2°C: HRP-polymer, 30min. DAB, 5min.



SDS-PAGE Analysis of Purified CD107a Mouse Monoclonal Antibody (LAMP1/7457 ). Confirmation of Purity and Integrity of Antibody.



Formalin-fixed, paraffin-embedded human tonsil stained with CD107a / LAMP1 Mouse Monoclonal Antibody (LAMP1/7457). HIER: Tris/EDTA, pH9.0, 45min. 2°C: HRP-polymer, 30min. DAB, 5min.

### Specificity & Comments

Lysosome-associated membrane proteins (LAMP) are glycosylated type I membrane proteins that play a role in the biogenesis of the pigment melanin. LAMP-1 (also designated CD107a) and LAMP-2 (also designated CD107b) are involved in a variety of functions, including cellular adhesion, and are thought to participate in the process of tumor invasion and metastasis. Newly synthesized LAMP-1 and LAMP-2 proteins are sorted at the trans-Golgi network and are transported intracellularly via a pathway that is distinct from the Clathrin-coated vesicles used for the mannose-6 phosphate receptor. LAMP-1 is expressed on the surface of Thrombin-activated but not resting platelets, and it is thought to be involved in the adhesive, prothrombic properties of these cells. Both LAMP-1 and LAMP-2 are involved in maintaining lysosome acidity and protecting the lysosomal membranes from autodigestion, and their expression is increased in patients with lysosomal storage disorders.

### Limitations and Warranty

This antibody is available for research use only and is not approved for use in diagnosis. There are no warranties, expressed or implied, which extend beyond this description. Company is not liable for any personal injury or economic loss resulting from this product.

### Supplied As

200ug/ml of Ab purified from Bioreactor Concentrate by Protein A/G. Prepared in 10mM PBS with 0.05% BSA & 0.05% azide. Also available WITHOUT BSA & azide at 1.0mg/ml.

### Storage and Stability

Antibody with azide - store at 2 to 8°C. Antibody without azide - store at -20 to -80°C. Antibody is stable for 24 months. Non-hazardous. No MSDS required.

### Research Areas

Hematopoietic Stem Cells, Immunology