

KNG1 / Kininogen 1 (KNG1-Heavy chain) Antibody

Mouse Monoclonal Antibody [Clone KNG1/7423]

Catalog No	Format	Size
3827-MSM3-P0	Purified Ab with BSA and Azide at 200ug/ml	20 ug
3827-MSM3-P1	Purified Ab with BSA and Azide at 200ug/ml	100 ug
3827-MSM3-P1ABX	Purified Ab WITHOUT BSA and Azide at 1.0mg/ml	100 ug

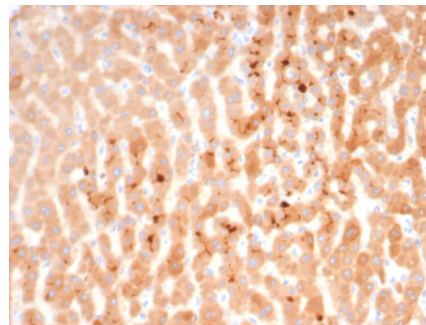
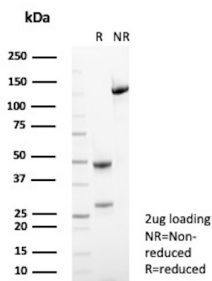
Applications	Tested Dillution	Note
Immunohistochemistry (IHC)	1-2ug/ml	30 min at RT. Staining of formalin-fixed tissues requires heating tissue sections in 10mM Tris with 1mM EDTA, pH 9.0, for 45 min at 95°C followed by cooling at RT for 20 minutes

Product Details

Clone	KNG1/7423
Gene Name	KNG1
Immunogen	Recombinant fragment (around aa1-200) of human KNG1 protein (exact sequence is proprietary)
Host	Mouse
Clonality	Monoclonal
Isotype / Light Chain	IgG1 / Kappa
Mol. Weight of Antigen	64 kDa (heavy chain); 53 kDa (light chain)
Cellular Localization	Extracellular. Secreted. Plasma.
Species Reactivity	Human
Positive Control	Distinct positivity in plasma and in several cases extracellular matrix along with cytoplasmic expression in kidney.

*Optimal dilution for a specific application should be determined.

Product Images for KNG1 / Kininogen 1 (KNG1-Heavy chain) Antibody



SDS-PAGE Analysis of Purified Kininogen-1 | Kininogen-1 heavy chain | T-kinin | Bradykinin | Lysyl-bradykinin | Kininogen-1 light chain | Low molecular weight growth-promoting factor Mouse Monoclonal Antibody (KNG1/7423).
Confirmation of Purity and Integrity of Antibody.

Formalin-fixed, paraffin-embedded human liver stained with Kininogen 1 (KNG1) Mouse Monoclonal Antibody (KNG1/7423). HIER: Tris/EDTA, pH9.0, 45min. 2°C: HRP-polymer, 30min. DAB, 5min.

Specificity & Comments

Kininogen is a 644 amino acid precursor protein that is expressed by the KNG1 gene and is secreted into blood plasma. Due to alternative splicing events, several Kininogen protein derivatives exist, including Kininogen LC and Kininogen HC, both of which are produced from the Kininogen precursor and exhibit different functions throughout the cell. Kininogen HC plays an important role in blood coagulation by helping to ensure that prekallikrein and Factor XI (both of which are involved in blood coagulation) are properly situated for interaction with Factor XII. Kininogen HC releases a smaller, active protein known as bradykinin, which plays a role in smooth muscle contraction, induction of hypotension, regulation of blood glucose levels, stimulation of nociceptors and overall mediation of inflammatory responses throughout the cell. In contrast to Kininogen HC, which is involved in blood clotting, Kininogen LC is primarily associated with inhibition of thrombocyte aggregation and also functions as a strong inhibitor of cysteine proteinases.

Limitations and Warranty

This antibody is available for research use only and is not approved for use in diagnosis. There are no warranties, expressed or implied, which extend beyond this description. Company is not liable for any personal injury or economic loss resulting from this product.

Supplied As

200ug/ml of Ab purified from Bioreactor Concentrate by Protein A/G. Prepared in 10mM PBS with 0.05% BSA & 0.05% azide. Also available WITHOUT BSA & azide at 1.0mg/ml.

Storage and Stability

Antibody with azide - store at 2 to 8°C. Antibody without azide - store at -20 to -80°C. Antibody is stable for 24 months. Non-hazardous. No MSDS required.

Research Areas

Cardiovascular, Signal Transduction
