

## HSP70-1A / HSPA1A Antibody

Mouse Monoclonal Antibody [Clone HSPA1A/7936]

Catalog No	Format	Size
3303-MSM6-P0	Purified Ab with BSA and Azide at 200ug/ml	20 ug
3303-MSM6-P1	Purified Ab with BSA and Azide at 200ug/ml	100 ug
3303-MSM6-P1ABX	Purified Ab WITHOUT BSA or Azide at 1.0mg/ml	100 ug

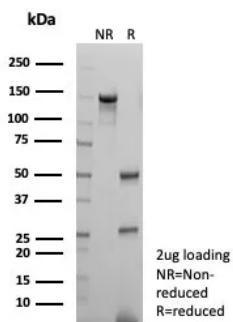
Applications	Tested Dillution	Note
Immunohistochemistry (IHC)	1-2ug/ml	30 min at RT. Staining of formalin-fixed tissues requires heating tissue sections in 10mM Tris with 1mM EDTA, pH 9.0, for 45 min at 95°C followed by cooling at RT for 20 minutes
Western Blot (WB)	2-4ug/ml	

### Product Details

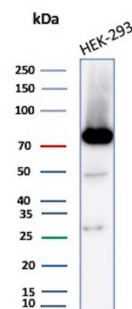
<b>Clone</b>	HSPA1A/7936
<b>Gene Name</b>	HSPA1A
<b>Immunogen</b>	Recombinant fragment (around aa200-400) of human HSPA1A protein (exact sequence is proprietary)
<b>Host</b>	Mouse
<b>Clonality</b>	Monoclonal
<b>Isotype / Light Chain</b>	IgG1 / Kappa
<b>Mol. Weight of Antigen</b>	70kDa
<b>Cellular Localization</b>	Cytoplasm. Localized in cytoplasmic mRNP granules containing untranslated mRNAs.
<b>Species Reactivity</b>	Human
<b>Positive Control</b>	Human lymph node, colon, kidney or testis. Brain, Skeletal muscle, HeLa, MCF7, Raji, Ramos.

\*Optimal dilution for a specific application should be determined.

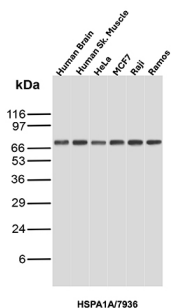
### Product Images for HSP70-1A / HSPA1A Antibody



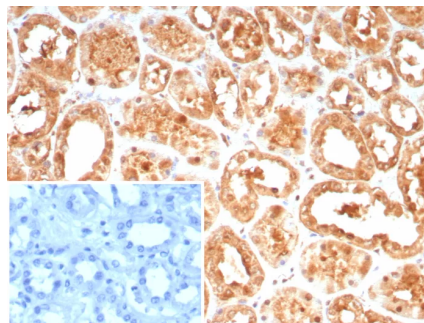
SDS-PAGE Analysis of Purified HSPA1A Mouse Monoclonal Antibody (HSPA1A/7936). Confirmation of Purity and Integrity of Antibody.



Western Blot Analysis of HEK-293 cell lysate using HSP70 Mouse Monoclonal Antibody (HSPA1A/7936).



Western Blot Analysis of Human Brain, Human Skeletal muscle, HeLa, MCF7, Raji and Ramos lysates using HSP70 Mouse Monoclonal Antibody (HSPA1A/7936).



Formalin-fixed, paraffin-embedded human kidney stained with HSPA1A Mouse Monoclonal Antibody (HSPA1A/7936). Inset: PBS instead of primary antibody; secondary only negative control.

### Specificity & Comments

This intronless gene encodes a 70kDa heat shock protein which is a member of the heat shock protein 70 family. In conjunction with other heat shock proteins, this protein stabilizes existing proteins against aggregation and mediates the folding of newly translated proteins in the cytosol and in organelles. It is also involved in the ubiquitin-proteasome pathway through interaction with the AU-rich element RNA-binding protein 1. The gene is located in the major histocompatibility complex class III region, in a cluster with two closely related genes which encode similar proteins. [provided by RefSeq]

### Limitations and Warranty

This antibody is available for research use only and is not approved for use in diagnosis. There are no warranties, expressed or implied, which extend beyond this description. Company is not liable for any personal injury or economic loss resulting from this product.

### Supplied As

200ug/ml of Ab purified from Bioreactor Concentrate by Protein A/G. Prepared in 10mM PBS with 0.05% BSA & 0.05% azide. Also available WITHOUT BSA at 1.0mg/ml.

### Storage and Stability

Antibody with azide - store at 2 to 8°C. Antibody is stable for 24 months., Non-hazardous. No MSDS required.

### Research Areas

Immunology, Infectious Disease, MAPK Signaling