

Recombinant Annexin A1 / (Hairy Cell Leukemia Marker) Antibody

Mouse Monoclonal Antibody [Clone rANXA1/9145]

Catalog No	Format	Size
301-MSM14-P0	Purified Ab with BSA and Azide at 200ug/ml	20 ug
301-MSM14-P1	Purified Ab with BSA and Azide at 200ug/ml	100 ug
301-MSM14-P1ABX	Purified Ab WITHOUT BSA and Azide at 1.0mg/ml	100 ug

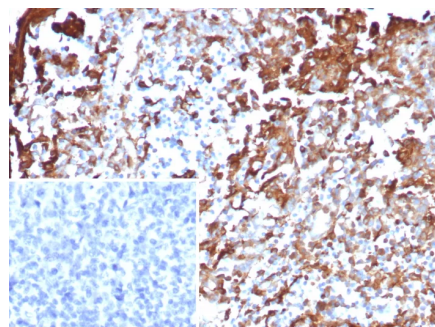
Applications	Tested Dillution	Note
Immunohistochemistry (IHC)	1-2ug/ml	30 min at RT. Staining of formalin-fixed tissues requires heating tissue sections in 10mM Tris with 1mM EDTA, pH 9.0, for 45 min at 95°C followed by cooling at RT for 20 minutes
Western Blot (WB)	2-4ug/ml	

Product Details

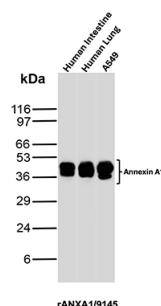
Clone	rANXA1/9145
Gene Name	ANXA1
Immunogen	Recombinant full-length human Annexin A1 protein
Host	Mouse
Clonality	Monoclonal
Isotype / Light Chain	IgG2b / Kappa
Mol. Weight of Antigen	38kDa
Cellular Localization	nucleus and basolateral cell membrane of ciliated cells in the tracheal endothelium, Nucleus. Cytoplasm. Cell projection > cilium. Basolateral cell membrane. Found in the cilium
Species Reactivity	Guinea Pig, Hamster, Human, Mouse, Rabbit, Rat
Positive Control	HeLa or A549 cells. Human esophagus, placenta or prostate.

**Optimal dilution for a specific application should be determined.*

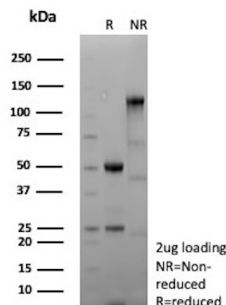
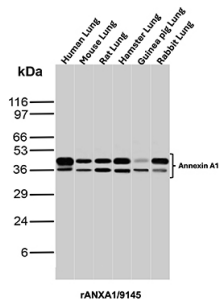
Product Images for Recombinant Annexin A1 / (Hairy Cell Leukemia Marker) Antibody



Formalin-fixed, paraffin-embedded human tonsil stained with Annexin A1 Recombinant Mouse Monoclonal Antibody (rANXA1/9145). Inset: PBS instead of primary antibody; secondary only negative control.



Western Blot Analysis of Human Intestine, Human Lung and A549 lysates using Annexin A1 Recombinant Mouse Monoclonal Antibody (rANXA1/9145).



Western Blot Analysis of Human Lung, Mouse Lung, Rat Lung, Hamster Lung, Guinea pig Lung and Rabbit Lung tissue lysates using Annexin A1 Recombinant Mouse Monoclonal Antibody (rANXA1/9145).

SDS-PAGE Analysis of Purified Annexin A1 Recombinant Mouse Monoclonal Antibody (rANXA1/9145). Confirmation of Purity and Integrity of Antibody.

Specificity & Comments

The ANXA1 gene belongs to the annexin family, and contains 4 annexin repeats. A pair of annexin repeats may form one binding site for calcium and a phospholipid. ANXA1 promotes membrane fusion and is involved in exocytosis. The gene for ANXA1 is upregulated in hairy cell leukemia (HCL), and its protein expression is specific for HCL. Detection of ANXA1 provides a simple, highly sensitive and specific assay for diagnosing HCL. Annexin A1 has also been found to be protective against DNA damage induced by heat in breast cancer cells, suggesting it is involved in tumor suppressive and protective activities, and also is associated with treatment resistance.

Supplied As

200ug/ml of Ab purified from Bioreactor Concentrate by Protein A/G. Prepared in 10mM PBS with 0.05% BSA & 0.05% azide. Also available WITHOUT BSA & azide at 1.0mg/ml.

Storage and Stability

Antibody with azide - store at 2 to 8°C. Antibody without azide - store at -20 to -80°C. Antibody is stable for 24 months. Non-hazardous. No MSDS required.

Research Areas

Cardiovascular, Immunology, Cytokine Signaling, Dendritic Cell Marker, Signal Transduction

Limitations and Warranty

This antibody is available for research use only and is not approved for use in diagnosis. There are no warranties, expressed or implied, which extend beyond this description. Company is not liable for any personal injury or economic loss resulting from this product.