

## Recombinant GP2 (Glycoprotein 2) / ZAP75 Antibody

Mouse Monoclonal Antibody [Clone rGP2/8617]

Catalog No	Format	Size
2813-MSM13-P0	Purified Ab with BSA and Azide at 200ug/ml	20 ug
2813-MSM13-P1	Purified Ab with BSA and Azide at 200ug/ml	100 ug
2813-MSM13-P1ABX	Purified Ab WITHOUT BSA or Azide at 1.0mg/ml	100 ug

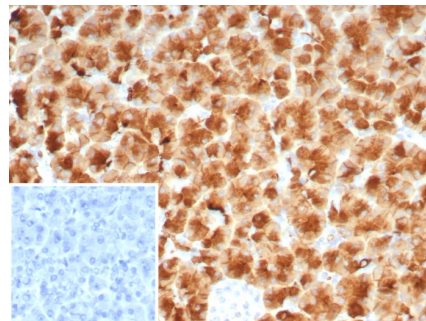
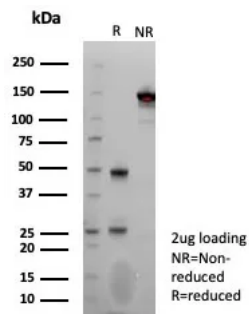
Applications	Tested Dillution	Note
Immunohistochemistry (IHC)	1-2ug/ml	30 min at RT. Staining of formalin-fixed tissues requires heating tissue sections in 10mM Tris with 1mM EDTA, pH 9.0, for 45 min at 95°C followed by cooling at RT for 20 minutes
Western Blot (WB)	2-4ug/ml	

### Product Details

<b>Clone</b>	rGP2/8617
<b>Immunogen</b>	Recombinant fragment (around aa35-179) of the human GP2 protein (exact sequence is proprietary)
<b>Host</b>	Mouse
<b>Clonality</b>	Monoclonal
<b>Isotype / Light Chain</b>	IgG1 / Kappa
<b>Mol. Weight of Antigen</b>	59.48kDa
<b>Cellular Localization</b>	Apical cell membrane, Cell membrane, Endosome, Membrane raft, Secreted, Zymogen granule membrane
<b>Species Reactivity</b>	Human
<b>Positive Control</b>	PANC-1 cells. Human pancreas.

\*Optimal dilution for a specific application should be determined.

### Product Images for Recombinant GP2 (Glycoprotein 2) / ZAP75 Antibody



SDS-PAGE Analysis of Purified GP2 Recombinant Mouse Monoclonal Antibody (rGP2/8617). Confirmation of Integrity and Purity of the Antibody.

Formalin-fixed, paraffin-embedded human pancreas stained with GP2 Recombinant Mouse Monoclonal Antibody (rGP2/8617). Inset: PBS instead of primary antibody; secondary only negative control.

**Specificity & Comments**

GP2 (glycoprotein 2), also known as ZAP75, is a 537 amino acid secreted protein. It is an integral membrane protein that is secreted from intracellular zymogen granules and associates with the plasma membrane via glycosylphosphatidylinositol (GPI) linkage. GP2 is cleaved and then released into the pancreatic duct along with exocrine secretions. GP2 binds pathogens such as enterobacteria, thereby playing an important role in the innate immune response. The C-terminus of this protein is related to the C-terminus of the protein encoded by the neighboring gene, uromodulin (UMOD). GP2 is also expressed on the apical plasma membrane of specialized microfold (M) cells among enterocytes and serves as a transcytotic receptor for mucosal antigens. M cells are considered a promising target for oral vaccination against various infectious diseases.

---

**Limitations and Warranty**

This antibody is available for research use only and is not approved for use in diagnosis. There are no warranties, expressed or implied, which extend beyond this description. Company is not liable for any personal injury or economic loss resulting from this product.

---

**Supplied As**

200ug/ml of Ab produced in a mammalian-based expression system. Prepared in 10mM PBS with 0.05% BSA & 0.05% azide. Also available WITHOUT BSA & azide at 1.0mg/ml.

---

**Storage and Stability**

Antibody with azide - store at 2 to 8 °C. Antibody without azide - store at -20 to -80 °C. Antibody is stable for 24 months. Non-hazardous. No MSDS required.

---