

Recombinant GP2 (Glycoprotein 2) / ZAP75 Antibody

Rabbit Monoclonal Antibody [Clone GP2/8229R]

Catalog No	Format	Size
2813-RBM12-P0	Purified Ab with BSA and Azide at 200ug/ml	20 ug
2813-RBM12-P1	Purified Ab with BSA and Azide at 200ug/ml	100 ug
2813-RBM12-P1ABX	Purified Ab WITHOUT BSA and Azide at 1.0mg/ml	100 ug

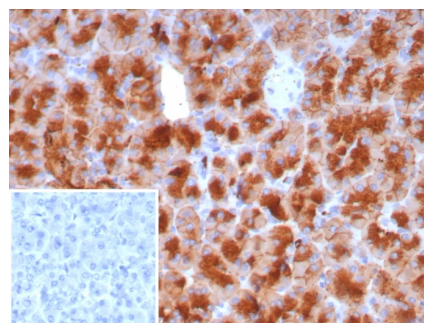
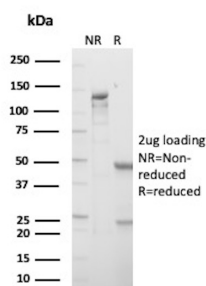
Applications	Tested Dillution	Note
Immunohistochemistry (IHC)	1-2ug/ml	30 min at RT. Staining of formalin-fixed tissues requires heating tissue sections in 10mM Tris with 1mM EDTA, pH 9.0, for 45 min at 95°C followed by cooling at RT for 20 minutes

Product Details

Clone	GP2/8229R
Gene Name	GP2
Immunogen	Recombinant fragment of human GP2 protein (around aa 35-179) (exact sequence is proprietary)
Host	Rabbit
Clonality	Monoclonal
Isotype / Light Chain	IgG / Kappa
Mol. Weight of Antigen	59kDa
Cellular Localization	Cell surface. Secreted.
Species Reactivity	Human
Positive Control	PANC-1 Cells. Pancreas

**Optimal dilution for a specific application should be determined.*

Product Images for Recombinant GP2 (Glycoprotein 2) / ZAP75 Antibody



SDS-PAGE Analysis of Purified Pancreatic secretory granule membrane major glycoprotein GP2 Recombinant Rabbit Monoclonal Antibody (GP2/8229R). Confirmation of Purity and Integrity of Antibody.

Formalin-fixed, paraffin-embedded human pancreas stained with GP2 Recombinant Rabbit Monoclonal Antibody (GP2/8229R). Inset: PBS instead of primary antibody; secondary only negative control.

Specificity & Comments

GP2 (glycoprotein 2), also known as ZAP75, is a 537 amino acid secreted protein. It is an integral membrane protein that is secreted from intracellular zymogen granules and associates with the plasma membrane via glycosylphosphatidylinositol (GPI) linkage. GP2 is cleaved and then released into the pancreatic duct along with exocrine secretions. GP2 binds pathogens such as enterobacteria, thereby playing an important role in the innate immune response. The C-terminus of this protein is related to the C-terminus of the protein encoded by the neighboring gene, uromodulin (UMOD). GP2 is also expressed on the apical plasma membrane of specialized microfold (M) cells among enterocytes and serves as a transcytotic receptor for mucosal antigens. M cells are considered a promising target for oral vaccination against various infectious diseases.

Limitations and Warranty

This antibody is available for research use only and is not approved for use in diagnosis. There are no warranties, expressed or implied, which extend beyond this description. Company is not liable for any personal injury or economic loss resulting from this product.

Supplied As

200ug/ml of Ab purified from Bioreactor Concentrate by Protein A/G. Prepared in 10mM PBS with 0.05% BSA & 0.05% azide. Also available WITHOUT BSA & azide at 1.0mg/ml.

Storage and Stability

Antibody with azide - store at 2 to 8°C. Antibody without azide - store at -20 to -80°C. Antibody is stable for 24 months. Non-hazardous. No MSDS required.
