

FSH-beta (Follicle Stimulating Hormone-beta) Antibody

Mouse Monoclonal Antibody [Clone FSHB/6845]

Catalog No	Format	Size
2488-MSM5-P0	Purified Ab with BSA and Azide at 200ug/ml	20 ug
2488-MSM5-P1	Purified Ab with BSA and Azide at 200ug/ml	100 ug
2488-MSM5-P1ABX	Purified Ab WITHOUT BSA and Azide at 1.0mg/ml	100 ug

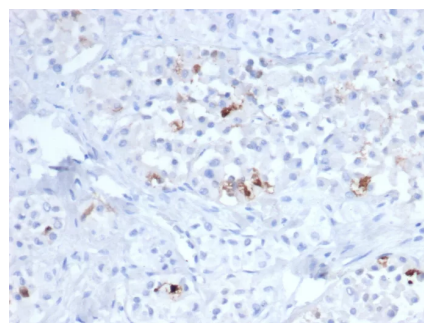
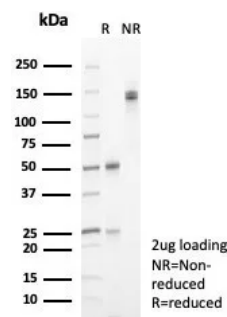
Applications	Tested Dillution	Note
Immunohistochemistry (IHC)	1-2ug/ml	30 min at RT. Staining of formalin-fixed tissues requires heating tissue sections in 10mM Tris with 1mM EDTA, pH 9.0, for 45 min at 95°C followed by cooling at RT for 20 minutes

Product Details

Clone	FSHB/6845
Gene Name	FSHB
Immunogen	Recombinant fragment (around aa1-100) of human FSHB (exact sequence is proprietary)
Host	Mouse
Clonality	Monoclonal
Isotype / Light Chain	IgG3 / Kappa
Mol. Weight of Antigen	22kDa
Cellular Localization	Cytoplasm. Secreted.
Species Reactivity	Human
Positive Control	Human anterior pituitary gland.

*Optimal dilution for a specific application should be determined.

Product Images for FSH-beta (Follicle Stimulating Hormone-beta) Antibody



SDS-PAGE Analysis of Purified FSH beta Mouse Monoclonal Antibody (FSHB/6845). Confirmation of Purity and Integrity of Antibody.

Formalin-fixed, paraffin-embedded human pituitary tissue stained with FSHbeta Mouse Monoclonal Antibody (FSHB/6845). HIER: Tris/EDTA, pH9.0, 45min. 2°C: HRP-polymer, 30min. DAB, 5min.

Specificity & Comments

Follicle stimulating hormone (FSH) is a hormone synthesized and secreted by gonadotrophs in the anterior pituitary gland. In the ovary, FSH stimulates the growth of immature Graafian follicles to maturation. As the follicle grows, it releases inhibin, which deactivates the FSH production. In men, FSH enhances the production of androgen-binding protein by the Sertoli cells of the testis and is critical for spermatogenesis. FSH and LH act synergistically in reproduction. FSH is a useful marker in the classification of pituitary tumors and the study of pituitary disease.

Supplied As

200ug/ml of Ab purified from Bioreactor Concentrate by Protein A/G. Prepared in 10mM PBS with 0.05% BSA & 0.05% azide. Also available WITHOUT BSA & azide at 1.0mg/ml.

Storage and Stability

Antibody with azide - store at 2 to 8°C. Antibody without azide - store at -20 to -80°C. Antibody is stable for 24 months. Non-hazardous. No MSDS required.

Research Areas

Signal Transduction

Limitations and Warranty

This antibody is available for research use only and is not approved for use in diagnosis. There are no warranties, expressed or implied, which extend beyond this description. Company is not liable for any personal injury or economic loss resulting from this product.
