

Recombinant Cystatin A Antibody

Mouse Monoclonal Antibody [Clone rCSTA/8995]

Catalog No	Format	Size
1475-MSM8-P0	Purified Ab with BSA and Azide at 200ug/ml	20 ug
1475-MSM8-P1	Purified Ab with BSA and Azide at 200ug/ml	100 ug
1475-MSM8-P1ABX	Purified Ab WITHOUT BSA and Azide at 1.0mg/ml	100 ug

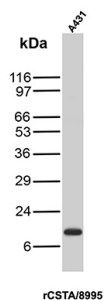
Applications	Tested Dillution	Note
Immunohistochemistry (IHC)	1-2ug/ml	30 min at RT. Staining of formalin-fixed tissues requires heating tissue sections in 10mM Tris with 1mM EDTA, pH 9.0, for 45 min at 95°C followed by cooling at RT for 20 minutes
Western Blot (WB)	2-4ug/ml	

Product Details

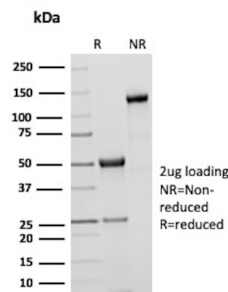
Clone	rCSTA/8995
Gene Name	CSTA
Immunogen	Recombinant fragment of human CSTA protein (around aa 1-98) (exact sequence is proprietary)
Host	Mouse
Clonality	Monoclonal
Isotype / Light Chain	IgG2b / Kappa
Mol. Weight of Antigen	11kDa
Cellular Localization	Cell Surface. Cytoplasm. Nucleus.
Species Reactivity	Human
Positive Control	THP-1 cells. Human tonsil or prostate tissue (IHC). A431.

*Optimal dilution for a specific application should be determined.

Product Images for Recombinant Cystatin A Antibody



Western Blot Analysis of A431 cell lysate using Cystatin A Recombinant Mouse Monoclonal Antibody (rCSTA/8995).



SDS-PAGE Analysis of Purified CSTA Recombinant Mouse Monoclonal Antibody (rCSTA/8995). Confirmation of Purity and Integrity of Antibody.

Specificity & Comments

The cystatin superfamily encompasses proteins that contain multiple cystatin-like sequences. Some of the members are active cysteine protease inhibitors, while others have lost or perhaps never acquired this inhibitory activity. There are three inhibitory families in the superfamily, including the type 1 cystatins (stefins), type 2 cystatins, and kininogens. This gene encodes a stefin that functions as a cysteine protease inhibitor, forming tight complexes with papain and the cathepsins B, H, and L. The protein is one of the precursor proteins of cornified cell envelope in keratinocytes and plays a role in epidermal development and maintenance. Stefins have been proposed as prognostic and diagnostic tools for cancer.

Supplied As

200ug/ml of Ab purified from Bioreactor Concentrate by Protein A/G. Prepared in 10mM PBS with 0.05% BSA & 0.05% azide. Also available WITHOUT BSA & azide at 1.0mg/ml.

Storage and Stability

Antibody with azide - store at 2 to 8°C. Antibody without azide - store at -20 to -80°C. Antibody is stable for 24 months. Non-hazardous. No MSDS required.

Research Areas

Developmental Biology, Nuclear Marker

Limitations and Warranty

This antibody is available for research use only and is not approved for use in diagnosis. There are no warranties, expressed or implied, which extend beyond this description. Company is not liable for any personal injury or economic loss resulting from this product.
