

## Recombinant Calponin-1 (Smooth Muscle Marker) Antibody

Rabbit Monoclonal Antibody [Clone CNN1/8870R]

Catalog No	Format	Size
1264-RBM13-P0	Purified Ab with BSA and Azide at 200ug/ml	20 ug
1264-RBM13-P1	Purified Ab with BSA and Azide at 200ug/ml	100 ug
1264-RBM13-P1ABX	Purified Ab WITHOUT BSA and Azide at 1.0mg/ml	100 ug

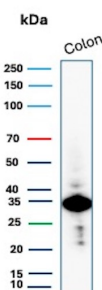
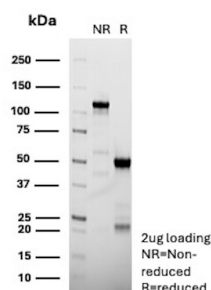
Applications	Tested Dillution	Note
Immunohistochemistry (IHC)	1-2ug/ml	30 min at RT. Staining of formalin-fixed tissues requires heating tissue sections in 10mM Tris with 1mM EDTA, pH 9.0, for 45 min at 95°C followed by cooling at RT for 20 minutes
Western Blot (WB)	2-4ug/ml	

### Product Details

<b>Clone</b>	CNN1/8870R
<b>Gene Name</b>	CNN1
<b>Immunogen</b>	Recombinant fragment corresponding to C-terminus of human Calponin (exact sequence is proprietary)
<b>Host</b>	Rabbit
<b>Clonality</b>	Monoclonal
<b>Isotype / Light Chain</b>	IgG / Kappa
<b>Mol. Weight of Antigen</b>	33kDa
<b>Cellular Localization</b>	Cytoplasm.
<b>Species Reactivity</b>	Human
<b>Positive Control</b>	K562 cells. Myoepithelial cells in breast ducts, colon or leiomyosarcoma. intestine, Lung

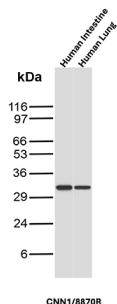
*\*Optimal dilution for a specific application should be determined.*

### Product Images for Recombinant Calponin-1 (Smooth Muscle Marker) Antibody

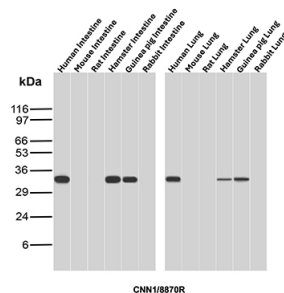


SDS-PAGE Analysis of Purified CNN1 Recombinant Rabbit Monoclonal Antibody (CNN1/8870R). Confirmation of Purity and Integrity of Antibody.

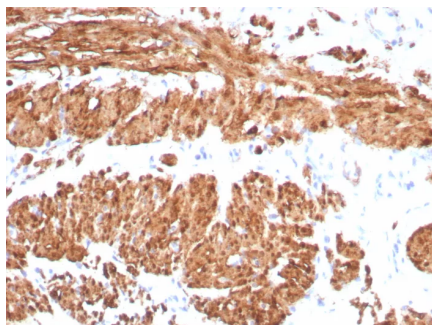
Western Blot Analysis of Colon tissue lysate using Calponin-1 Recombinant Rabbit Monoclonal Antibody (CNN1/8870R).



Western Blot Analysis of Human Intestine and Human Lung tissue lysates using Calponin-1 Recombinant Rabbit Monoclonal Antibody (CNN1/8870R).



Western Blot Analysis of Intestine and Lung tissue lysates of different species using Calponin-1 Recombinant Rabbit Monoclonal Antibody (CNN1/8870R).



Formalin-fixed, paraffin-embedded human smooth muscle stained with Calponin Rabbit Recombinant Monoclonal Antibody (CNN1/8870R). HIER: Tris/EDTA, pH9.0, 45min. 2°C: HRP-polymer, 30min. DAB, 5min.

## Specificity & Comments

Calponin a 33 kDa polypeptide, is a cytoskeleton-associated actin-binding protein that also interacts tropomyosin and calmodulin. Calponin antibody has been found to be useful as a marker for myoepithelial and basal lamina in differentiating microinvasive from in situ ductal carcinomas of the breast. Calponin antibody may also have applications in malignant myoepithelium and pleomorphic adenoma of salivary gland as well as a useful marker for fine needle aspirates of papillary breast lesions. The antibody has been found in tissue extracts from smooth muscle, but not in fibroblast extracts.

## Supplied As

200ug/ml of Ab purified by Protein A/G. Prepared in 10mM PBS with 0.05% BSA & 0.05% azide. Also available WITHOUT BSA & azide at 1.0mg/ml.

## Storage and Stability

Antibody with azide - store at 2 to 8°C. Antibody without azide - store at -20 to -80°C. Antibody is stable for 24 months. Non-hazardous. No MSDS required.

## Research Areas

Cardiovascular, Mesenchymal Stem Cell Differentiation

## Limitations and Warranty

This antibody is available for research use only and is not approved for use in diagnosis. There are no warranties, expressed or implied, which extend beyond this description. Company is not liable for any personal injury or economic loss resulting from this product.