

## Recombinant Clusterin / Apolipoprotein J (APO-J) Antibody

Mouse Monoclonal Antibody [Clone rCLU/9149]

Catalog No	Format	Size
1191-MSM26-P0	Purified Ab with BSA and Azide at 200ug/ml	20 ug
1191-MSM26-P1	Purified Ab with BSA and Azide at 200ug/ml	100 ug
1191-MSM26-P1ABX	Purified Ab WITHOUT BSA and Azide at 1.0mg/ml	100 ug

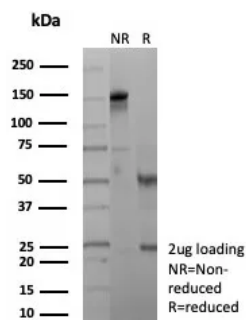
Applications	Tested Dillution	Note
Immunohistochemistry (IHC)	1-2ug/ml	30 min at RT. Staining of formalin-fixed tissues requires heating tissue sections in 10mM Tris with 1mM EDTA, pH 9.0, for 45 min at 95°C followed by cooling at RT for 20 minutes
Western Blot (WB)	2-4ug/ml	

### Product Details

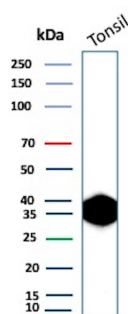
<b>Clone</b>	rCLU/9149
<b>Gene Name</b>	CLU
<b>Immunogen</b>	Recombinant fragment (around aa410-440) of human CLU protein (exact sequence is proprietary)
<b>Host</b>	Mouse
<b>Clonality</b>	Monoclonal
<b>Isotype / Light Chain</b>	IgG2b / Kappa
<b>Mol. Weight of Antigen</b>	70kDa (precursor); 36-39kDa ( $\hat{1}\pm$ ); 34-36kDa ( $\hat{1}^2$ )
<b>Cellular Localization</b>	Cytoplasm, Secreted
<b>Species Reactivity</b>	Human
<b>Positive Control</b>	Human pancreas, Spleen tonsil or cervix.

\*Optimal dilution for a specific application should be determined.

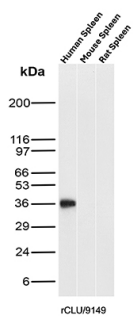
### Product Images for Recombinant Clusterin / Apolipoprotein J (APO-J) Antibody



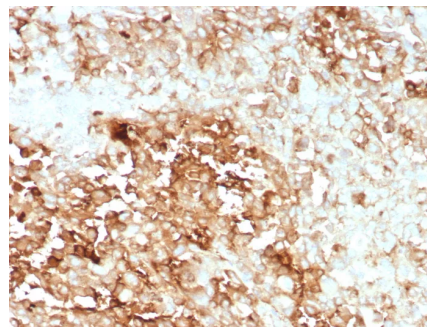
SDS-PAGE Analysis of Purified Clusterin Recombinant Mouse Monoclonal Antibody (rCLU/9149). Confirmation of Purity and Integrity of Antibody.



Western Blot Analysis of Human Tonsil tissue lysate using Clusterin Recombinant Mouse Monoclonal Antibody (rCLU/9149).



Western Blot Analysis of Human Spleen, Mouse Spleen and Rat Spleen tissue lysates using Clusterin Recombinant Mouse Monoclonal Antibody (rCLU/9149).



Formalin-fixed, paraffin-embedded human adrenal gland stained with Clusterin/APOJ Recombinant Mouse Monoclonal Antibody (rCLU/9149). HIER: Tris/EDTA, pH9.0, 45min. 2°C: HRP-polymer, 30min. DAB, 5min.

### Specificity & Comments

Clusterin, also designated complement lysis inhibitor (CLI), apolipoprotein J (APOJ), sulfated glycoprotein 2 (SGP2), SP40 and testosterone-repressed prostate message 2 (TRPM2), is a secretory, heterodimeric glycoprotein that influences immune regulation, cell adhesion, transformation, lipid transportation, tissue remodeling, membrane recycling and cell-cell interactions. Clusterin is synthesized as a 449 amino acid polypeptide that is post-translationally cleaved at an internal bond between Arg 227 and Ser 228. Two subunits,  $\alpha$  and  $\beta$ , are associated through disulfide bonds. The  $\alpha$  subunit (also called ApoJ $\alpha$ ) corresponds to residues 23-227. The  $\beta$  subunit (also called ApoJ $\beta$ ) corresponds to residues 228-449. Overexpression of Clusterin appears to be more common in late stages of mammary tumor progression. Clusterin markedly influences  $\beta$ -Amyloid structure and neuritic toxicity in vivo and may influence Alzheimer's pathogenesis.

### Limitations and Warranty

This antibody is available for research use only and is not approved for use in diagnosis. There are no warranties, expressed or implied, which extend beyond this description. Company is not liable for any personal injury or economic loss resulting from this product.

### Supplied As

200ug/ml of Ab purified from Bioreactor Concentrate by Protein A/G. Prepared in 10mM PBS with 0.05% BSA & 0.05% azide. Also available WITHOUT BSA & azide at 1.0mg/ml.

### Storage and Stability

Antibody with azide - store at 2 to 8°C. Antibody without azide - store at -20 to -80°C. Antibody is stable for 24 months. Non-hazardous. No MSDS required.

### Research Areas

Cardiovascular, Complement System, Immunology, Neuroscience