

Chromogranin B / CHGB (Neuroendocrine Marker) Antibody

Mouse Monoclonal Antibody [Clone CHGB/7756]

Catalog No	Format	Size
1114-MSM6-P0	Purified Ab with BSA and Azide at 200ug/ml	20 ug
1114-MSM6-P1	Purified Ab with BSA and Azide at 200ug/ml	100 ug
1114-MSM6-P1ABX	Purified Ab WITHOUT BSA and Azide at 1.0mg/ml	100 ug

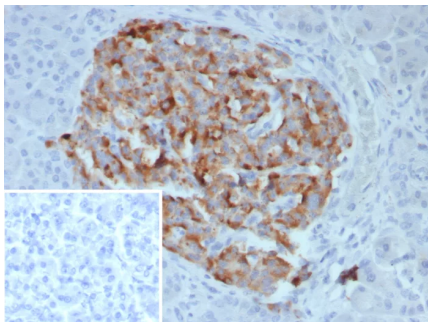
Applications	Tested Dillution	Note
Immunohistochemistry (IHC)	1-2ug/ml	30 min at RT. Staining of formalin-fixed tissues requires heating tissue sections in 10mM Tris with 1mM EDTA, pH 9.0, for 45 min at 95°C followed by cooling at RT for 20 minutes

Product Details

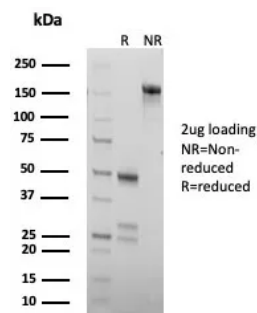
Clone	CHGB/7756
Gene Name	CHGB
Immunogen	Recombinant fragment (around aa250-450) of human CHGB protein (exact sequence is proprietary)
Host	Mouse
Clonality	Monoclonal
Isotype / Light Chain	IgG1 / Kappa
Mol. Weight of Antigen	76/110kDa
Cellular Localization	Secreted
Species Reactivity	Human
Positive Control	Human adrenal gland, kidney, pancreas, cerebellum or stomach.

*Optimal dilution for a specific application should be determined.

Product Images for Chromogranin B / CHGB (Neuroendocrine Marker) Antibody



Formalin-fixed, paraffin-embedded human pancreas stained with Chromogranin B Mouse Monoclonal Antibody (CHGB/7756). Inset: PBS instead of primary antibody; secondary only negative control.



SDS-PAGE Analysis of Purified Chromogranin B Mouse Monoclonal Antibody (CHGB/7756). Confirmation of Purity and Integrity of Antibody.

Specificity & Comments

Chromogranins (secretogranins) are acidic glycoproteins that localize within secretory granules of endocrine, neuroendocrine and neuronal tissue. Family members include chromogranin A (Chr-A), chromogranin B (Chr-B, also known as secretogranin I) chromogranin C (also known as secretogranin II or Sg II), secretogranin III (Sg III or SCG3). High levels of Chr-A expression is a characteristic of neuroendocrine tumors. Pancreastatin is a peptide derived from Chr-A which inhibits Insulin secretion, exocrine pancreatic secretion and gastric acid secretion. Pancreastatin exists as two forms; the major form is expressed in stomach and colon extracts. In neuroendocrine cells the level Sg II has been shown to increase four-fold in response to histamine, while levels of Chr-A and Chr-B showed little or no increase. Sg III is an acidic secretory protein expressed in neuronal and endocrine cells. In the anterior lobe of the rat pituitary gland, Sg III is present in mammatropes and thyrotropes, moderately in gonadotropes and corticotropes, though not in somatotropes. Sg III and carboxypeptidase E (CPE) bind specifically to cholesterol-rich secretory granule (SG) membranes.

Limitations and Warranty

This antibody is available for research use only and is not approved for use in diagnosis. There are no warranties, expressed or implied, which extend beyond this description. Company is not liable for any personal injury or economic loss resulting from this product.

Supplied As

200ug/ml of Ab purified from Bioreactor Concentrate by Protein A/G. Prepared in 10mM PBS with 0.05% BSA & 0.05% azide. Also available WITHOUT BSA & azide at 1.0mg/ml.

Storage and Stability

Antibody with azide - store at 2 to 8°C. Antibody without azide - store at -20 to -80°C. Antibody is stable for 24 months. Non-hazardous. No MSDS required.

Research Areas

Cardiovascular
