

## Recombinant p27Kip1 (Mitotic Inhibitor/Suppressor Protein) Antibody

Rabbit Monoclonal Antibody [Clone KIP1/9168R]

Catalog No	Format	Size
1027-RBM9-P0	Purified Ab with BSA and Azide at 200ug/ml	20 ug
1027-RBM9-P1	Purified Ab with BSA and Azide at 200ug/ml	100 ug
1027-RBM9-P1ABX	Purified Ab WITHOUT BSA and Azide at 1.0mg/ml	100 ug

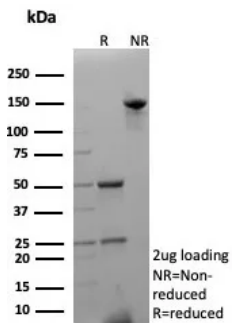
Applications	Tested Dillution	Note
Immunohistochemistry (IHC)	1-2ug/ml	30 min at RT. Staining of formalin-fixed tissues requires heating tissue sections in 10mM Tris with 1mM EDTA, pH 9.0, for 45 min at 95°C followed by cooling at RT for 20 minutes
Western Blot (WB)	2-4ug/ml	

### Product Details

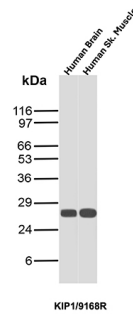
<b>Clone</b>	KIP1/9168R
<b>Gene Name</b>	CDKN1B
<b>Immunogen</b>	Recombinant full-length human CDKN1B protein
<b>Host</b>	Rabbit
<b>Clonality</b>	Monoclonal
<b>Isotype / Light Chain</b>	IgG / Kappa
<b>Mol. Weight of Antigen</b>	25-26kDa
<b>Cellular Localization</b>	Nucleus.
<b>Species Reactivity</b>	Human
<b>Positive Control</b>	Breast cervical or colon carcinoma. HeLa or MCF7 cells. Human tonsil, Brain, Skeletal muscle.

\*Optimal dilution for a specific application should be determined.

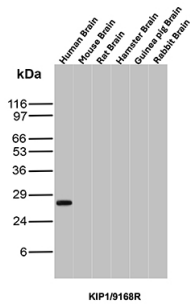
### Product Images for Recombinant p27Kip1 (Mitotic Inhibitor/Suppressor Protein) Antibody



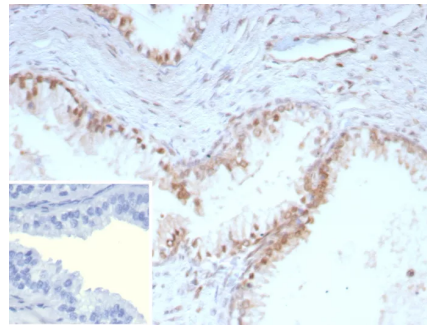
SDS-PAGE Analysis of Purified Recombinant Rabbit Monoclonal Antibody [Clone KIP1/9168R]. Confirmation of Purity and Integrity of Antibody.



Western blot analysis of Human Brain and Human Skeletal Muscle tissue lysates using p27 Recombinant Rabbit Monoclonal Antibody (KIP1/9168R).



Western blot analysis of Brain tissue lysates of different species using p27 Recombinant Rabbit Monoclonal Antibody (KIP1/9168R).



IHC analysis of formalin-fixed, paraffin-embedded human prostate. Strong nuclear staining using KIP1/9168R at 2ug/ml in PBS for 30min RT. HIER: Tris/EDTA, pH9.0, 45min. 2°C: HRP-polymer, 30min. DAB, 5min.

### Specificity & Comments

This MAb recognizes a 27kDa protein, identified as the p27Kip1, a cell cycle regulatory mitotic inhibitor. It is highly specific and shows no cross-reaction with other related mitotic inhibitors. In Western blotting of cell lysates from 7 human breast cancer cell lines (ZR75-1, ZR75-30, MCF-7, MDAMB453, T47D, CAL51, 734B), the antibody labels a single band corresponding to p27Kip1. It functions as a negative regulator of G1 progression and has been proposed to function as a possible mediator of TGF- $\beta$  induced G1 arrest. p27Kip1 is a candidate tumor suppressor gene. Reportedly, low p27 expression has been associated with unfavorable prognosis in renal cell carcinoma, colon carcinoma, breast carcinomas, non-small-cell lung carcinoma, hepatocellular carcinoma, multiple myeloma, and lymph node metastases in papillary carcinoma of the thyroid, as well as a more aggressive phenotype in carcinoma of the cervix.

### Limitations and Warranty

This antibody is available for research use only and is not approved for use in diagnosis. There are no warranties, expressed or implied, which extend beyond this description. Company is not liable for any personal injury or economic loss resulting from this product.

### Supplied As

200ug/ml of Ab produced in CHO cell mammalian-based expression system. Prepared in 10mM PBS with 0.05% BSA & 0.05% azide. Also available WITHOUT BSA & azide at 1.0mg/ml.

### Storage and Stability

Antibody with azide - store at 2 to 8°C. Antibody without azide - store at -20 to -80°C. Antibody is stable for 24 months. Non-hazardous. No MSDS required.

### Research Areas

AKT Signaling, Cardiovascular, Cytokine Signaling, Immunology, Infectious Disease, Lung Cancer, Nuclear Marker, Ovarian Cancer, Signal Transduction, Transcription Factors