

Recombinant Cytokeratin, Basic (Type II or HMW) Antibody

Rabbit Monoclonal Antibody [Clone KRTH/7293R]

Catalog No	Format	Size
RBM53-7293-P0	Purified Ab with BSA and Azide at 200ug/ml	20 ug
RBM53-7293-P1	Purified Ab with BSA and Azide at 200ug/ml	100 ug
RBM53-7293-P1ABX	Purified Ab WITHOUT BSA or Azide at 1.0mg/ml	100 ug

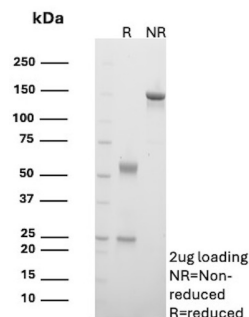
Applications	Tested Dillution	Note
Immunohistochemistry (IHC)	1-2ug/ml	30 min at RT. Staining of formalin-fixed tissues requires heating tissue sections in 10mM Tris with 1mM EDTA, pH 9.0, for 45 min at 95°C followed by cooling at RT for 20 minutes
Western Blot (WB)	2-4ug/ml	

Product Details

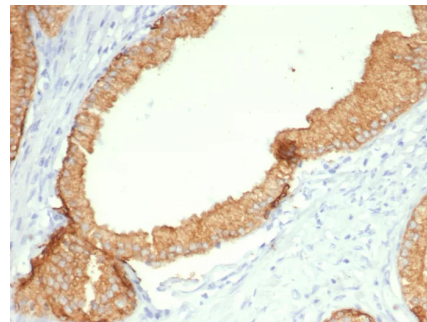
Clone	KRTH/7293R
Immunogen	Recombinant fragment (around aa306-325) of the human Cytokeratin, Type II protein (exact sequence is proprietary)
Host	Rabbit
Clonality	Monoclonal
Isotype / Light Chain	IgG / Kappa
Mol. Weight of Antigen	65.84kDa
Species Reactivity	Human
Positive Control	skin or squamous cell carcinoma.

*Optimal dilution for a specific application should be determined.

Product Images for Recombinant Cytokeratin, Basic (Type II or HMW) Antibody



SDS-PAGE Analysis of Purified Cytokeratin Recombinant Rabbit Monoclonal Antibody (KRTH/4392R). Confirmation of Purity and Integrity of Antibody.



Formalin-fixed, paraffin-embedded human skin stained with CK Type II Recombinant Rabbit Monoclonal Antibody (KRTH/4392R). HIER: Tris/EDTA, pH9.0, 45min. 2°C: HRP-polymer, 30min. DAB, 5min.

Specificity & Comments

The keratins are the typical intermediate filament proteins of epithelia, showing an outstanding degree of molecular diversity. Heteropolymeric filaments are formed by pairing of type I and type II molecules. In humans 54 functional keratin genes exist. They are expressed in highly specific patterns related to the epithelial type and stage of cellular differentiation. This antibody can detect high molecular weight CK1, CK2, CK3, CK4, CK5, CK6, CK7 and CK8. It is usually used in a cytokeratin cocktail with type I cytokeratins antibody.

Supplied As

200ug/ml of Ab produced in a mammalian-based expression system. Prepared in 10mM PBS with 0.05% BSA & 0.05% azide. Also available WITHOUT BSA & azide at 1.0mg/ml.

Storage and Stability

Antibody with azide - store at 2 to 8 °C. Antibody without azide - store at -20 to -80 °C. Antibody is stable for 24 months. Non-hazardous. No MSDS required.

Limitations and Warranty

This antibody is available for research use only and is not approved for use in diagnosis. There are no warranties, expressed or implied, which extend beyond this description. Company is not liable for any personal injury or economic loss resulting from this product.
