

Recombinant Cytokeratin, pan (Epithelial Marker) Antibody

Mouse Monoclonal Antibody [Clone rKRTL/8751]

Catalog No	Format	Size
MSM56-8751-P0	Purified Ab with BSA and Azide at 200ug/ml	20 ug
MSM56-8751-P1	Purified Ab with BSA and Azide at 200ug/ml	100 ug
MSM56-8751-P1ABX	Purified Ab WITHOUT BSA or Azide at 1.0mg/ml	100 ug

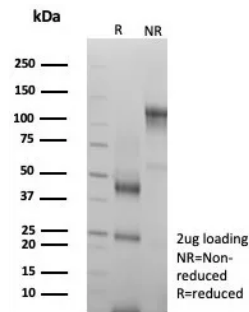
Applications	Tested Dillution	Note
Immunohistochemistry (IHC)	1-2ug/ml	30 min at RT. Staining of formalin-fixed tissues requires heating tissue sections in 10mM Tris with 1mM EDTA, pH 9.0, for 45 min at 95°C followed by cooling at RT for 20 minutes
Western Blot (WB)	2-4ug/ml	

Product Details

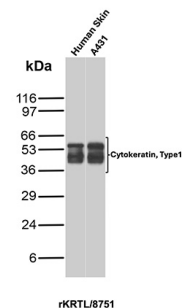
Clone	rKRTL/8751
Immunogen	Human epidermal keratin.
Host	Mouse
Clonality	Monoclonal
Isotype / Light Chain	IgG1 / Kappa
Mol. Weight of Antigen	61.9kDa
Species Reactivity	Human
Positive Control	Skin or squamous cell carcinoma (IHC). A431.

*Optimal dilution for a specific application should be determined.

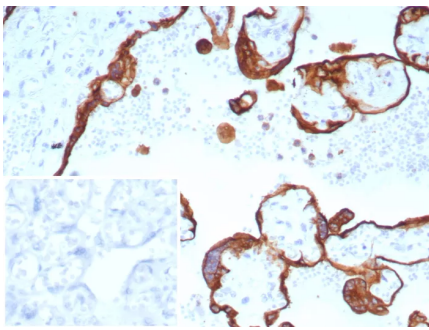
Product Images for Recombinant Cytokeratin, pan (Epithelial Marker) Antibody



SDS-PAGE Analysis of Purified CK LMW Recombinant Mouse Monoclonal (rKRTL/8751). Confirmation of Purity and Integrity of Antibody.



Western Blot Analysis of Human Skin and A431 lysates using Cytokeratin, Acidic (Type I or LMW) Mouse Recombinant Monoclonal Antibody (rKRTL/8751).



Formalin-fixed, paraffin-embedded human placenta stained with CK, LMW Recombinant Mouse Monoclonal Antibody (rKRTL/8751). Inset: PBS instead of primary antibody; secondary only negative control.

Specificity & Comments

This MAb recognizes the 56.5kDa (CK10); 50kDa (CK14); 50kDa (CK15); 48kDa (CK16); 40kDa (CK19) keratins of the acidic (Type I or LMW) subfamily. Twenty human keratins are resolved with two-dimensional gel electrophoresis into acidic (pI 6.0) subfamilies. The acidic keratins have molecular weights (MW) of 56.5, 55, 51, 50, 50, 48, 46, 45, and 40kDa. MAb AE3 recognizes the 65-67, 64, 59, 58, 56, and 52kDa keratins of basic subfamily. Many studies have shown the usefulness of keratins as markers in cancer research and tumor diagnosis. AE1/AE3 is a broad spectrum anti pan-keratin antibody cocktail, which differentiates epithelial tumors from non-epithelial tumors e.g. squamous vs. adenocarcinoma of the lung, liver carcinoma, breast cancer, and esophageal cancer.

Limitations and Warranty

This antibody is available for research use only and is not approved for use in diagnosis. There are no warranties, expressed or implied, which extend beyond this description. Company is not liable for any personal injury or economic loss resulting from this product.

Supplied As

200ug/ml of Ab produced in a mammalian-based expression system. Prepared in 10mM PBS with 0.05% BSA & 0.05% azide. Also available WITHOUT BSA & azide at 1.0mg/ml.

Storage and Stability

Antibody with azide - store at 2 to 8 °C. Antibody without azide - store at -20 to -80 °C. Antibody is stable for 24 months. Non-hazardous. No MSDS required.