

## Recombinant Cytokeratin, Type I (Epithelial Marker) Antibody

Rabbit Monoclonal Antibody [Clone KRTL/7784R]

Catalog No	Format	Size
RBM54-7784-P0	Purified Ab with BSA and Azide at 200ug/ml	20 ug
RBM54-7784-P1	Purified Ab with BSA and Azide at 200ug/ml	100 ug
RBM54-7784-P1ABX	Purified Ab WITHOUT BSA and Azide at 1.0mg/ml	100 ug

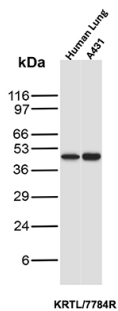
Applications	Tested Dillution	Note
Immunohistochemistry (IHC)	1-2ug/ml	30 min at RT. Staining of formalin-fixed tissues requires heating tissue sections in 10mM Tris with 1mM EDTA, pH 9.0, for 45 min at 95°C followed by cooling at RT for 20 minutes
Western Blot (WB)	2-4ug/ml	

### Product Details

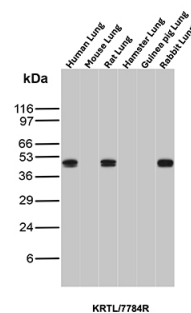
<b>Clone</b>	KRTL/7784R
<b>Gene Name</b>	KRT77
<b>Immunogen</b>	Synthetic peptide corresponding to Type I Cytokeratins residues within aa100-200 of Type I Cytokeratins
<b>Host</b>	Rabbit
<b>Clonality</b>	Monoclonal
<b>Isotype / Light Chain</b>	IgG
<b>Mol. Weight of Antigen</b>	60/53/51/45/40kDa
<b>Cellular Localization</b>	Cytoplasm.
<b>Species Reactivity</b>	Human
<b>Positive Control</b>	skin or squamous cell carcinoma. Lung, A431

\*Optimal dilution for a specific application should be determined.

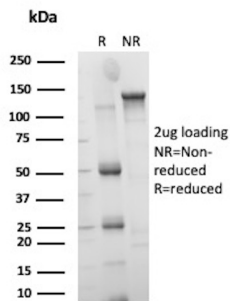
### Product Images for Recombinant Cytokeratin, Type I (Epithelial Marker) Antibody



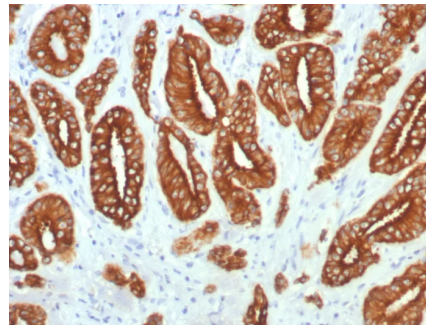
Western Blot Analysis of Human Lung and A431 lysates using Cytokeratin, Type I Recombinant Rabbit Monoclonal Antibody (KRTL/7784R).



Western Blot Analysis of Lung tissue lysates of different species using Cytokeratin, Type I Recombinant Rabbit Monoclonal Antibody (KRTL/7784R).



SDS-PAGE Analysis of Purified Keratin, type II cytoskeletal 1b Recombinant Rabbit Monoclonal Antibody (KRTL/7784R). Confirmation of Purity and Integrity of Antibody.



Formalin-fixed, paraffin-embedded human prostate carcinoma stained with CK Type I Recombinant Rabbit Monoclonal Antibody (KRTL/7784R). HIER: Tris/EDTA, pH9.0, 45min. 2°C: HRP-polymer, 30min. DAB, 5min.

### Specificity & Comments

The keratins are the typical intermediate filament proteins of epithelia, showing an outstanding degree of molecular diversity. Heteropolymeric filaments are formed by pairing of type I and type II molecules. In humans 54 functional keratin genes exist. They are expressed in highly specific patterns related to the epithelial type and stage of cellular differentiation. This antibody can detect high molecular weight CK10, CK14, CK15 and CK16 and low molecular weight CK19. It usually used in a cytokeratin cocktail with type II cytokeratin antibody.

### Supplied As

200ug/ml of Ab purified from Bioreactor Concentrate by Protein A/G. Prepared in 10mM PBS with 0.05% BSA & 0.05% azide. Also available WITHOUT BSA & azide at 1.0mg/ml.

### Storage and Stability

Antibody with azide - store at 2 to 8°C. Antibody without azide - store at -20 to -80°C. Antibody is stable for 24 months. Non-hazardous. No MSDS required.

### Research Areas

Developmental Biology

### Limitations and Warranty

This antibody is available for research use only and is not approved for use in diagnosis. There are no warranties, expressed or implied, which extend beyond this description. Company is not liable for any personal injury or economic loss resulting from this product.