

ALDH1L1 Antibody

Mouse Monoclonal Antibody [Clone ALDH1L1/7701]

| Catalog No | Format | Size |
|------------------|---|--------|
| 10840-MSM1-P0 | Purified Ab with BSA and Azide at 200ug/ml | 20 ug |
| 10840-MSM1-P1 | Purified Ab with BSA and Azide at 200ug/ml | 100 ug |
| 10840-MSM1-P1ABX | Purified Ab WITHOUT BSA and Azide at 1.0mg/ml | 100 ug |

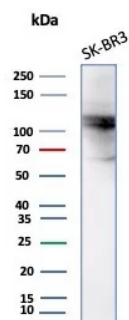
| Applications | Tested Dillution | Note |
|----------------------------|------------------|---|
| Immunohistochemistry (IHC) | 1-2ug/ml | 30 min at RT. Staining of formalin-fixed tissues requires heating tissue sections in 10mM Tris with 1mM EDTA, pH 9.0, for 45 min at 95°C followed by cooling at RT for 20 minutes |
| Western Blot (WB) | 2-4ug/ml | |

Product Details

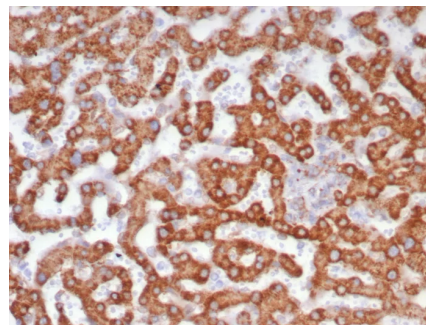
| | |
|-------------------------------|--|
| Clone | ALDH1L1/7701 |
| Gene Name | ALDH1L1 |
| Immunogen | Recombinant fragment (around aa400-600) of human ALDH1L1 protein (exact sequence is proprietary) |
| Host | Mouse |
| Clonality | Monoclonal |
| Isotype / Light Chain | IgG2b / Kappa |
| Mol. Weight of Antigen | 99kDa |
| Cellular Localization | Cytoplasm |
| Species Reactivity | Human |
| Positive Control | Human kidney or liver. A549 or SK-BR3 cells. |

**Optimal dilution for a specific application should be determined.*

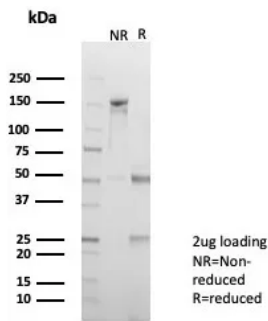
Product Images for ALDH1L1 Antibody



Western blot analysis of SK-BR3 cell lysate using ALDH1L1 Mouse Monoclonal Antibody (ALDH1L1/7701).



Formalin-fixed, paraffin-embedded human liver stained with ALDH1L1 Mouse Monoclonal Antibody (ALDH1L1/7701). HIER: Tris/EDTA, pH9.0, 45min. 2°C: HRP-polymer, 30min. DAB, 5min.



SDS-PAGE Analysis of Purified ADH1L1 Mouse Monoclonal Antibody (ALDH1L1/7701). Confirmation of Purity and Integrity of Antibody.

Specificity & Comments

Aldehyde dehydrogenases (ALDHs) mediate NADP⁺-dependent oxidation of aldehydes into acids during detoxification of alcohol-derived acetaldehyde, lipid peroxidation and metabolism of corticosteroids, biogenic amines and neurotransmitters. ALDH1L1 (aldehyde dehydrogenase 1 family member L1), also known as FTHFD or 10-FTHFD (10-formyltetrahydrofolate dehydrogenase), is a cytosolic protein that is developmentally regulated in the cerebellum. ALDH1L1 binds to folate and catalyzes the conversion of 10-formyltetrahydrofolate (10-FTHF) to tetrahydrofolate (THF). This suggests a possible role for ALDH1L1 in the regulation of cellular THF levels as well as in the inhibition of cell proliferation (as 10-FTHF is essential for the synthesis of purine). In addition, the overexpression of ALDH1L1 can restrict cell proliferation in vitro.

Limitations and Warranty

This antibody is available for research use only and is not approved for use in diagnosis. There are no warranties, expressed or implied, which extend beyond this description. Company is not liable for any personal injury or economic loss resulting from this product.

Supplied As

200ug/ml of Ab purified from Bioreactor Concentrate by Protein A/G. Prepared in 10mM PBS with 0.05% BSA & 0.05% azide. Also available WITHOUT BSA & azide at 1.0mg/ml.

Storage and Stability

Antibody with azide - store at 2 to 8°C. Antibody without azide - store at -20 to -80°C. Antibody is stable for 24 months. Non-hazardous. No MSDS required.

Research Areas

Cardiovascular