

## Recombinant Human Nuclear Antigen (KU p70/80) Antibody

Rabbit Monoclonal Antibody [Clone 235-1R]

Catalog No	Format	Size
RBM8-8775-P0	Purified Ab with BSA and Azide at 200ug/ml	20 ug
RBM8-8775-P1	Purified Ab with BSA and Azide at 200ug/ml	100 ug
RBM8-8775-P1ABX	Purified Ab WITHOUT BSA or Azide at 1.0mg/ml	100 ug

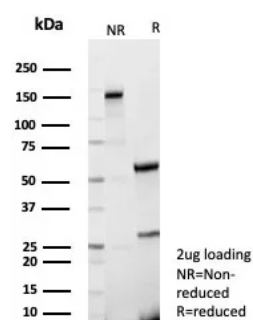
Applications	Tested Dillution	Note
Immunohistochemistry (IHC)	1-2ug/ml	30 min at RT. Staining of formalin-fixed tissues requires heating tissue sections in 10mM Tris with 1mM EDTA, pH 9.0, for 45 min at 95°C followed by cooling at RT for 20 minutes
Western Blot (WB)	2-4ug/ml	

### Product Details

<b>Clone</b>	235-1R
<b>Immunogen</b>	Nuclei of human myeloid leukemia biopsy cells
<b>Host</b>	Rabbit
<b>Clonality</b>	Monoclonal
<b>Isotype / Light Chain</b>	IgG / Kappa
<b>Species Reactivity</b>	Human
<b>Positive Control</b>	All human cells. Human tonsil.

\*Optimal dilution for a specific application should be determined.

### Product Images for Recombinant Human Nuclear Antigen (KU p70/80) Antibody



SDS-PAGE Analysis of Purified HuNu Recombinant Rabbit Monoclonal Antibody (235-1R). Confirmation of Purity and Integrity of Antibody.

### Specificity & Comments

This monoclonal antibody is an excellent marker for human cells in xenographic model research. It reacts specifically with human cells. It is a part of a new panel of reagents, which recognizes subcellular organelles or compartments of human cells. These markers may be useful in identification of these organelles in cells, tissues, and biochemical preparations. MAb 235-1R recognizes an antigen associated with the nuclei in human cells. It can be used to stain the nuclei in cell or tissue preparations and can be used as a nuclear marker in subcellular fractions. It produces a speckled pattern in normal and malignant cells and may be used to stain the nuclei of cells in fixed or frozen tissue sections. It can also be used with paraformaldehyde fixed frozen tissue or cell preparations.

### Limitations and Warranty

This antibody is available for research use only and is not approved for use in diagnosis. There are no warranties, expressed or implied, which extend beyond this description. Company is not liable for any personal injury or economic loss resulting from this product.

### Supplied As

200ug/ml of Ab produced in a mammalian-based expression system. Prepared in 10mM PBS with 0.05% BSA & 0.05% azide. Also available WITHOUT BSA & azide at 1.0mg/ml.

### Storage and Stability

Antibody with azide - store at 2 to 8 °C. Antibody without azide - store at -20 to -80 °C. Antibody is stable for 24 months. Non-hazardous. No MSDS required.