

## Recombinant Pan-HLA-II (DP, DQ, DR) Antibody

Rabbit Monoclonal Antibody [Clone HLA-Pan/8311R]

Catalog No	Format	Size
RBM4-8311-P0	Purified Ab with BSA and Azide at 200ug/ml	20 ug
RBM4-8311-P1	Purified Ab with BSA and Azide at 200ug/ml	100 ug
RBM4-8311-P1ABX	Purified Ab WITHOUT BSA and Azide at 1.0mg/ml	100 ug

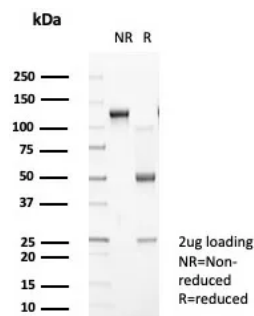
Applications	Tested Dillution	Note
Immunohistochemistry (IHC)	1-2ug/ml	30 min at RT. Staining of formalin-fixed tissues requires heating tissue sections in 10mM Tris with 1mM EDTA, pH 9.0, for 45 min at 95°C followed by cooling at RT for 20 minutes
Western Blot (WB)	2-4ug/ml	

### Product Details

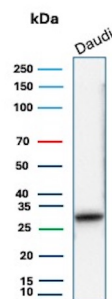
<b>Clone</b>	HLA-Pan/8311R
<b>Gene Name</b>	HLA-DPB1
<b>Immunogen</b>	Priess human B cell line
<b>Host</b>	Rabbit
<b>Clonality</b>	Monoclonal
<b>Isotype / Light Chain</b>	IgG / Kappa
<b>Mol. Weight of Antigen</b>	33-35kDa
<b>Cellular Localization</b>	Cell surface
<b>Species Reactivity</b>	Human
<b>Positive Control</b>	Daudi, Ramos or Raji cells. Human tonsil or lymph node.

\*Optimal dilution for a specific application should be determined.

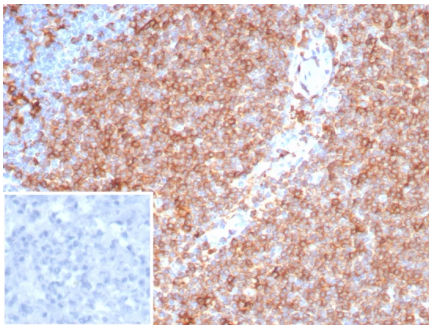
### Product Images for Recombinant Pan-HLA-II (DP, DQ, DR) Antibody



SDS-PAGE Analysis of Purified HLA-Pan Recombinant Rabbit Monoclonal (HLA-Pan/8311R) Confirmation of Purity and Integrity of Antibody.



Western Blot Analysis of Daudi cell lysate using Pan-HLA-II (DP, DQ, DR) Recombinant Rabbit Monoclonal Antibody (RBM4-8311).



Formalin-fixed, paraffin-embedded human tonsil stained with HLA-Pan Rabbit Recombinant Monoclonal Antibody (HLA-Pan/8311R). Inset: PBS instead of primary antibody; secondary only negative control.

### Specificity & Comments

Reacts with a common epitope of human major histocompatibility (MHC) class II antigens, HLA-DP, -DQ and -DR. Human MHC class II antigens are transmembrane glycoproteins composed of an alpha chain (36kDa) and a beta chain (27kDa). They are expressed primarily on antigen presenting cells such as B lymphocytes, monocytes, macrophages, and thymic epithelial cells and are also present on activated T lymphocytes. Human MHC class II genes are located in the HLA-D region that encodes at least six alpha and ten beta chain genes. Three loci, DR, DQ and DP, encode the major expressed products of the human class II region. The human MHC class II molecules bind intracellularly processed peptides and present them to T-helper cells. They, therefore, have a critical role in the initiation of the immune response.

### Limitations and Warranty

This antibody is available for research use only and is not approved for use in diagnosis. There are no warranties, expressed or implied, which extend beyond this description. Company is not liable for any personal injury or economic loss resulting from this product.

### Supplied As

200ug/ml of Ab purified from Bioreactor Concentrate by Protein A/G. Prepared in 10mM PBS with 0.05% BSA & 0.05% azide. Also available WITHOUT BSA & azide at 1.0mg/ml.

### Storage and Stability

Antibody with azide - store at 2 to 8°C. Antibody without azide - store at -20 to -80°C. Antibody is stable for 24 months. Non-hazardous. No MSDS required.

### Research Areas

Immunology