

LDB2 Antibody

Mouse Monoclonal Antibody [Clone PCRP-LDB2-1B10]

Catalog No	Format	Size
9079-MSM2-P0	Purified Ab with BSA and Azide at 200ug/ml	20 ug
9079-MSM2-P1	Purified Ab with BSA and Azide at 200ug/ml	100 ug
9079-MSM2-P1ABX	Purified Ab WITHOUT BSA and Azide at 1.0mg/ml	100 ug

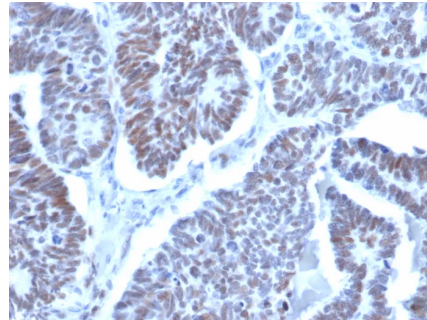
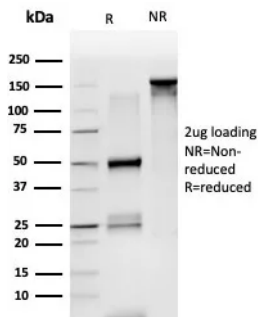
Applications	Tested Dillution	Note
Flow Cytometry (Flow)	1-2ug/million cells	
Immunofluorescence (IF)	1-3ug/ml	
Immunohistochemistry (IHC)	1-2ug/ml	30 min at RT. Staining of formalin-fixed tissues requires heating tissue sections in 10mM Tris with 1mM EDTA, pH 9.0, for 45 min at 95°C followed by cooling at RT for 20 minutes

Product Details

Clone	PCRP-LDB2-1B10
Gene Name	LDB2
Immunogen	Recombinant full-length human LDB2 protein
Host	Mouse
Clonality	Monoclonal
Isotype / Light Chain	IgG2c / Kappa
Mol. Weight of Antigen	42.7kDa
Cellular Localization	Nucleus.
Species Reactivity	Human
Positive Control	HeLa cells.

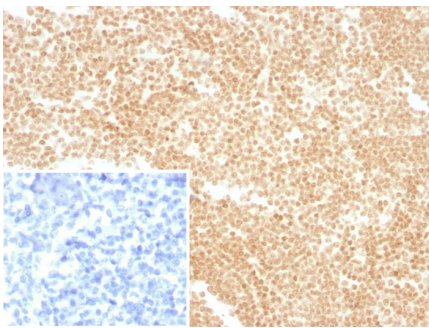
*Optimal dilution for a specific application should be determined.

Product Images for LDB2 Antibody

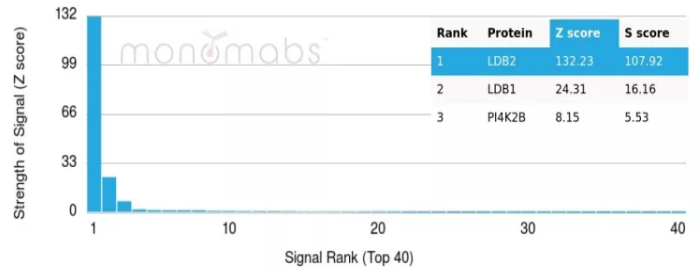


SDS-PAGE Analysis of Purified LDB2 Mouse Monoclonal Antibody (PCRP-LDB2-1B10). Confirmation of Purity and Integrity of Antibody.

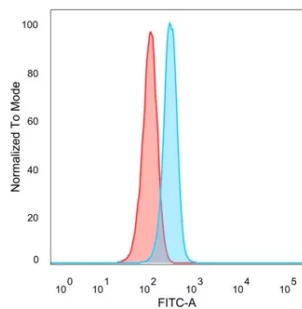
Formalin-fixed, paraffin-embedded human papillary thyroid cancer stained with LDB2 Mouse Monoclonal Antibody (PCRP-LDB2-1B10). HIER: Tris/EDTA, pH9.0, 45min. 2°: HRP-polymer, 30min. DAB, 5min.



Formalin-fixed, paraffin-embedded human tonsil stained with LDB2 Mouse Monoclonal Antibody (PCR-P-LDB2-1B10). Inset: PBS instead of primary antibody; secondary only negative control.



Analysis of Protein Array containing more than 19,000 full-length human proteins using LDB2 Mouse Monoclonal (PCR-P-LDB2-1B10). Z- and S- Score: The Z-score represents the strength of a signal that a monoclonal antibody (MAb) (in combination with a fluorescently-tagged anti-IgG secondary antibody) produces when binding to a particular protein on the HuProt™ array. Z-scores are described in units of standard deviations (SD's) above the mean value of all signals generated on that array. If targets on HuProt™ are arranged in descending order of the Z-score, the S-score is the difference (also in units of SD's) between the Z-score. S-score therefore represents the relative target specificity of a MAb to its intended target. A MAb is considered to specific to its intended target, if the MAb has an S-score of at least 2.5. For example, if a MAb binds to protein X with a Z-score of 43 and to protein Y with a Z-score of 14, then the S-score for the binding of that MAb to protein X is equal to 29.



Flow Cytometric Analysis of PFA-fixed HeLa cells. LDB2 Mouse Monoclonal Antibody (PCR-P-LDB2-1B10) followed by goat anti-mouse IgG-CF488 (blue); unstained cells (red).

Specificity & Comments

The LIM-only (LMO) proteins, LMO1 and LMO2, are nuclear factors that are characterized by a conserved LIM domain. The LIM domain consists of a cysteine-rich zinc-binding motif that is present in a variety of transcription factors, including the LIM homeobox (LHX) proteins expressed in the central nervous system and involved in cell differentiation. LMO1 and LMO2 are expressed in the adult CNS in a cell type-specific manner, where they are differentially regulated by neuronal activity and are involved in regulating the cellular differentiated phenotype of neurons. LMO2 lacks a specific DNA-binding homeobox domain but rather assembles into transcriptional regulatory complexes to mediate gene expression by interacting with the widely expressed nuclear LIM interactor (NLI). NLI, known also as CLIM-1, and the related protein CLIM-2 facilitate the formation of heteromeric LIM complexes and also enhance the nuclear retention of LIM proteins. LMO2 and the related protein LMO4 are expressed in thymic precursor cells. LMO4 is also expressed in mature T cells, cranial neural crest cells, somite, dorsal limb bud mesenchyme, motor neurons, and Schwann cell progenitors.

Limitations and Warranty

This antibody is available for research use only and is not approved for use in diagnosis. There are no warranties, expressed or implied, which extend beyond this description. Company is not liable for any personal injury or economic loss resulting from this product.

Supplied As

200ug/ml of Ab purified from Bioreactor Concentrate by Protein A/G. Prepared in 10mM PBS with 0.05% BSA & 0.05% azide. Also available WITHOUT BSA & azide at 1.0mg/ml.

Storage and Stability

Antibody with azide - store at 2 to 8°C. Antibody without azide - store at -20 to -80°C. Antibody is stable for 24 months. Non-hazardous. No MSDS required.