

Recombinant 14-3-3E / Tryptophan 5-Monooxygenase Antibody

Rabbit Monoclonal Antibody [Clone YWHAE/8636R]

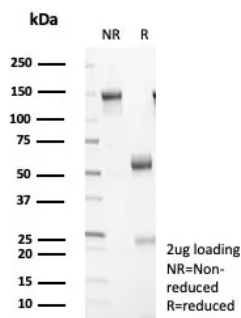
Catalog No	Format	Size
7531-RBM3-P0	Purified Ab with BSA and Azide	200ug/ml
7531-RBM3-P1	Purified Ab with BSA and Azide	200ug/ml
7531-RBM3-P1ABX	Purified Ab WITHOUT BSA and Azide	1.0mg/ml

Applications	Tested Dillution
Immunohistochemistry (IHC)	1-2ug/ml

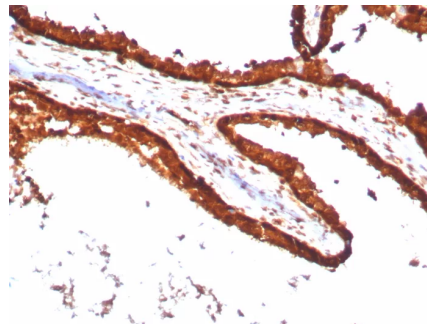
Product Details	
Clone	YWHAE/8636R
Gene Name	YWHAE
Immunogen	Recombinant human full-length YWHAE protein
Host	Rabbit
Clonality	Monoclonal
Isotype / Light Chain	IgG / Kappa
Mol. Weight of Antigen	29.4kDa
Cellular Localization	Cytoplasm, Nucleus
Species Reactivity	Human
Positive Control	HEK-293 or A-431 cell lines. Human brain prostate or placenta.

*Optimal dilution for a specific application should be determined.

Product Images for Recombinant 14-3-3E / Tryptophan 5-Monooxygenase Antibody



SDS-PAGE Analysis of Purified 14-3-3E Recombinant Rabbit Monoclonal Antibody (YWHAE/8636R). Confirmation of Purity and Integrity of Antibody.



Formalin-fixed, paraffin-embedded human prostate carcinoma stained with 14-3-3E Recombinant Rabbit Monoclonal Antibody (YWHAE/8636R). HIER: Tris/EDTA, pH9.0, 45min. 2°C: HRP-polymer, 30min. DAB, 5min.

Specificity & Comments

Adapter protein implicated in the regulation of a large spectrum of both general and specialized signaling pathway. Binds to a large number of partners, usually by recognition of a phosphoserine or phosphothreonine motif. Binding generally results in the modulation of the activity of the binding partner. It interacts with CDC25 phosphatases, RAF1 and IRS1 proteins, suggesting its role in diverse biochemical activities related to signal transduction, such as cell division and regulation of insulin sensitivity. It has also been implicated in the pathogenesis of small cell lung cancer. The YWHAE gene which encodes 14-3-3E has also been identified as a possible susceptibility gene for schizophrenia.

Research Areas

Apoptosis, Autophagy, Cardiovascular, AKT Signaling, Defective Intrinsic Apoptosis, Infectious Disease, Signal Transduction, Transcription Factors

Known Applications & Suggested Dilutions

Immunohistochemistry (Formalin-fixed) (1-2ug/ml for 30 minutes at RT),(Staining of formalin-fixed tissues requires heating tissue sections in 10mM Tris with 1mM EDTA, pH 9.0, for 45 min at 95°C followed by cooling at RT for 20 minutes),Optimal dilution for a specific application should be determined.

Limitations and Warranty

This antibody is available for research use only and is not approved for use in diagnosis.

There are no warranties, expressed or implied, which extend beyond this description. Company is not liable for any personal injury or economic loss resulting from this product.

Supplied As

200ug/ml of Ab purified from Bioreactor Concentrate by Protein A/G. Prepared in 10mM PBS with 0.05% BSA & 0.05% azide. Also available WITHOUT BSA & azide at 1.0mg/ml.

Storage and Stability

Antibody with azide - store at 2 to 8°C. Antibody without azide - store at -20 to -80°C. Antibody is stable for 24 months. Non-hazardous. No MSDS required.
