

Recombinant Topoisomerase II alpha (Proliferation & Drug-Resistance Marker) Antibody

Rabbit Monoclonal Antibody [Clone TOP2A/8103R]

Catalog No	Format	Size
7153-RBM10-P0	Purified Ab with BSA and Azide at 200ug/ml	20 ug
7153-RBM10-P1	Purified Ab with BSA and Azide at 200ug/ml	100 ug
7153-RBM10-P1ABX	Purified Ab WITHOUT BSA and Azide at 1.0mg/ml	100 ug

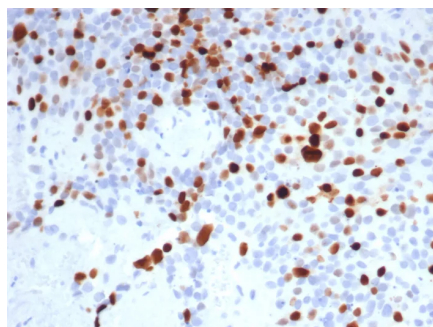
Applications	Tested Dillution	Note
Immunohistochemistry (IHC)	1-2ug/ml	30 min at RT. Staining of formalin-fixed tissues requires heating tissue sections in 10mM Tris with 1mM EDTA, pH 9.0, for 45 min at 95°C followed by cooling at RT for 20 minutes
Western Blot (WB)	2-4ug/ml	

Product Details

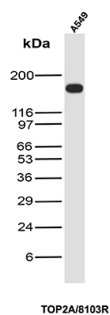
Clone	TOP2A/8103R
Gene Name	TOP2A
Immunogen	Recombinant fragment (around aa1431-1531) of human Topo II ? (TOP2A) protein (exact sequence is proprietary)
Host	Rabbit
Clonality	Monoclonal
Isotype / Light Chain	IgG / Kappa
Mol. Weight of Antigen	170kDa
Cellular Localization	Nucleus.
Species Reactivity	Human
Positive Control	Human tonsil or esophagus. A549

*Optimal dilution for a specific application should be determined.

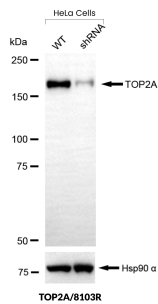
Product Images for Recombinant Topoisomerase II alpha (Proliferation & Drug-Resistance Marker) Antibody



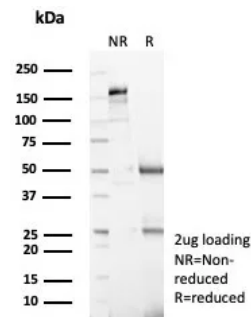
Formalin-fixed, paraffin-embedded human bladder cancer stained with Topo IIa Recombinant Rabbit Monoclonal Antibody (TOP2A/8103R). HIER: Tris/EDTA, pH9.0, 45min. 2°C: HRP-polymer, 30min. DAB, 5min.



Western Blot Analysis of A549 cell lysate using Topoisomerase II alpha Recombinant Rabbit Monoclonal Antibody (TOP2A/8103R).



Western Blot validation of anti-Topoisomerase II alpha antibody. Topoisomerase II alpha protein expression was compared in wild-type (WT) and Topoisomerase II alpha shRNA Knockdown (KD) HeLa cells (30ug of total protein). Loading control is shown below.



SDS-PAGE Analysis of Purified Topo IIa Recombinant Rabbit Monoclonal Antibody (TOP2A/8103R). Confirmation of Purity and Integrity of Antibody.

Specificity & Comments

The topoisomerase II- α isoform is a 170kDa nuclear protein and plays an important role in DNA synthesis and RNA transcription, as well as chromosomal segregation during mitosis. Topoisomerase II- α is reported to be a sensitive and specific marker of late S-, G2- & M-phases in transformed and developmentally regulated normal cells, and has been shown to be over-expressed in many human cancers. Decreased expression of Topoisomerase II- α is the predominant mechanism of resistance to several chemotherapeutic agents.

Supplied As

200ug/ml of Ab purified from Bioreactor Concentrate by Protein A/G. Prepared in 10mM PBS with 0.05% BSA & 0.05% azide. Also available WITHOUT BSA & azide at 1.0mg/ml.

Storage and Stability

Antibody with azide - store at 2 to 8°C. Antibody without azide - store at -20 to -80°C. Antibody is stable for 24 months. Non-hazardous. No MSDS required.

Research Areas

Nuclear Marker

Limitations and Warranty

This antibody is available for research use only and is not approved for use in diagnosis. There are no warranties, expressed or implied, which extend beyond this description. Company is not liable for any personal injury or economic loss resulting from this product.