

## TGF-beta (Transforming Growth Factor beta) Antibody

Mouse Monoclonal Antibody [Clone TGFB/7240]

Catalog No	Format	Size
7040-MSM4-P0	Purified Ab with BSA and Azide at 200ug/ml	20 ug
7040-MSM4-P1	Purified Ab with BSA and Azide at 200ug/ml	100 ug
7040-MSM4-P1ABX	Purified Ab WITHOUT BSA and Azide at 1.0mg/ml	100 ug

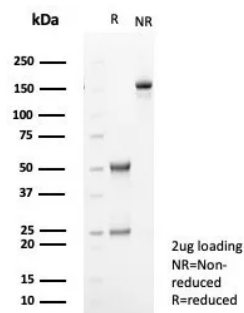
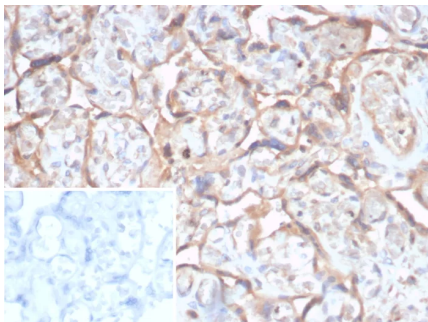
Applications	Tested Dillution	Note
Immunohistochemistry (IHC)	1-2ug/ml	30 min at RT. Staining of formalin-fixed tissues requires heating tissue sections in 10mM Tris with 1mM EDTA, pH 9.0, for 45 min at 95°C followed by cooling at RT for 20 minutes

### Product Details

Clone	TGFB/7240
Gene Name	TGFB1
Immunogen	Recombinant fragment (around aa200-390) of human TGFB protein
Host	Mouse
Clonality	Monoclonal
Isotype / Light Chain	IgG2 / Kappa
Mol. Weight of Antigen	13kDa
Cellular Localization	Cytoplasm, Secreted
Species Reactivity	Human
Positive Control	Salivary gland carcinoma

\*Optimal dilution for a specific application should be determined.

### Product Images for TGF-beta (Transforming Growth Factor beta) Antibody



Formalin-fixed, paraffin-embedded human placenta stained with TGF beta Mouse Monoclonal Antibody (TGFB/7240). Inset: PBS instead of primary antibody; secondary only negative control.

SDS-PAGE Analysis of Purified TGF beta Mouse Monoclonal Antibody (TGFB/7240). Confirmation of Purity and Integrity of Antibody.

### Specificity & Comments

This MAb recognizes TGF beta 1, 2 and 3. Three TGFs have been identified in mammals. TGF $\beta$ 1, TGF $\beta$ 2 and TGF $\beta$ 3 are each synthesized as precursor proteins that are very similar in that each is cleaved to yield a 112 amino acid polypeptide that remains associated with the latent portion of the molecules. Biologically active TGF $\beta$  requires dimerization of the monomers (usually homodimers) and release of the latent peptide portion. Overall, the mature region of the TGF $\beta$ 3 protein has approximately 80% identity to the mature region of both TGF $\beta$ 1 and TGF $\beta$ 2. However, the NH2 terminals or precursor regions of their molecules share only 27% sequence identity. TGF $\beta$  s inhibits the growth of epithelial cells and stimulate the growth of mesenchymal cells. ?

---

### Limitations and Warranty

This antibody is available for research use only and is not approved for use in diagnosis. There are no warranties, expressed or implied, which extend beyond this description. Company is not liable for any personal injury or economic loss resulting from this product.

---

### Supplied As

200ug/ml of Ab purified from Bioreactor Concentrate by Protein A/G. Prepared in 10mM PBS with 0.05% BSA & 0.05% azide. Also available WITHOUT BSA & azide at 1.0mg/ml.

---

### Storage and Stability

Antibody with azide - store at 2 to 8°C. Antibody without azide - store at -20 to -80°C. Antibody is stable for 24 months. Non-hazardous. No MSDS required.

---

### Research Areas

AKT Signaling, Angiogenesis, Cardiovascular, Colon Cancer, Complement System, Cytokine Signaling, Developmental Biology, Immunology, Infectious Disease, MAPK Signaling, Mesenchymal Stem Cell Differentiation, Neuroinflammation, Signal Transduction, Stem Cell Differentiation, Transcription Factors

---