

Recombinant Integrase interactor 1 (INI-1) / SNF5 / SMARCB1 Antibody

Rabbit Monoclonal Antibody [Clone INI1/8935R]

Catalog No	Format	Size
6598-RBM15-P0	Purified Ab with BSA and Azide at 200ug/ml	20 ug
6598-RBM15-P1	Purified Ab with BSA and Azide at 200ug/ml	100 ug
6598-RBM15-P1ABX	Purified Ab WITHOUT BSA and Azide at 1.0mg/ml	100 ug

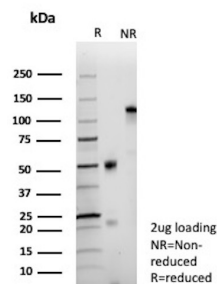
Applications	Tested Dillution	Note
Immunohistochemistry (IHC)	1-2ug/ml	30 min at RT. Staining of formalin-fixed tissues requires heating tissue sections in 10mM Tris with 1mM EDTA, pH 9.0, for 45 min at 95°C followed by cooling at RT for 20 minutes
Western Blot (WB)	2-4ug/ml	

Product Details

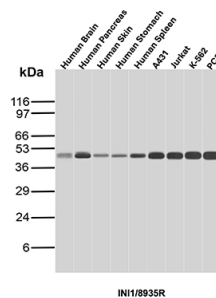
Clone	INI1/8935R
Gene Name	SMARCB1
Immunogen	Recombinant full-length human SMARCB1 protein
Host	Rabbit
Clonality	Monoclonal
Isotype / Light Chain	IgG / Kappa
Mol. Weight of Antigen	47kDa
Cellular Localization	Nucleus.
Species Reactivity	Human
Positive Control	astrocytoma or kidney. Human Brain, Human Pancreas, Human Skin, Human Stomach, Human Spleen, A4341, Jurkat, K-562, PC3

*Optimal dilution for a specific application should be determined.

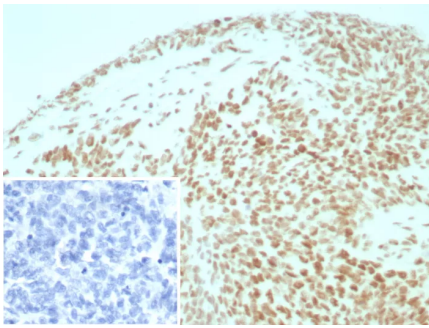
Product Images for Recombinant Integrase interactor 1 (INI-1) / SNF5 / SMARCB1 Antibody



SDS-PAGE Analysis of Purified SWI/SNF-related matrix-associated actin-dependent regulator of chromatin subfamily B member 1 Recombinant Monoclonal Antibody (INI1/8935R). Confirmation of Purity and Integrity of Antibody.



Western Blot Analysis of Human Brain, Human Pancreas, Human Skin, Human Stomach, Human Spleen, A431, Jurkat, K-562 and PC3 lysates using INI-1 Rabbit Recombinant Monoclonal Antibody (INI1/8935R).



Formalin-fixed, paraffin-embedded human ovarian cancer stained with INI-1 Recombinant Rabbit Monoclonal Antibody (INI1/8935R) Inset: PBS instead of primary antibody; secondary only negative control.

Specificity & Comments

The INI-1 gene, which encodes a functionally uncharacterized protein component of the hSWI/SNF chromatin remodeling complex, is often mutated or deleted in malignant rhabdoid tumor (MRT). Two isoforms of INI-1, that differ by the variable inclusion of amino acids, potentially are produced by differential RNA splicing. The morphology of MRTs can present challenges in differential diagnosis. The overall survival of MRTs relative to its potential mimics (medulloblastoma, supratentorial primitive neuroectodermal tumors (sPNETs)) is quite low, and thus differentiation from these other tumors is desirable. Lack of nuclear labeling by anti-INI-1 is characteristic of MRT. The majority of medulloblastomas and sPNETs are labeled by anti-INI-1. MRTs also originate from the kidney and soft tissues.

Limitations and Warranty

This antibody is available for research use only and is not approved for use in diagnosis. There are no warranties, expressed or implied, which extend beyond this description. Company is not liable for any personal injury or economic loss resulting from this product.

Supplied As

200ug/ml of Ab purified from Bioreactor Concentrate by Protein A/G. Prepared in 10mM PBS with 0.05% BSA & 0.05% azide. Also available WITHOUT BSA & azide at 1.0mg/ml.

Storage and Stability

Antibody with azide - store at 2 to 8°C. Antibody without azide - store at -20 to -80°C. Antibody is stable for 24 months. Non-hazardous. No MSDS required.

Research Areas

Nuclear Marker, Transcription Factors