

## CCL18 / C-C motif chemokine ligand 18 Antibody

Mouse Monoclonal Antibody [Clone CCL18/3744]

Catalog No	Format	Size
6362-MSM4-P0	Purified Ab with BSA and Azide at 200ug/ml	20 ug
6362-MSM4-P1	Purified Ab with BSA and Azide at 200ug/ml	100 ug
6362-MSM4-P1ABX	Purified Ab WITHOUT BSA at 1.0mg/ml	100 ug

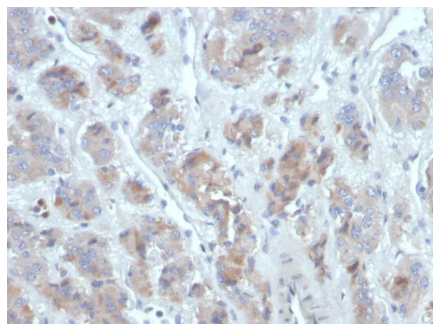
Applications	Tested Dillution	Note
Immunohistochemistry (IHC)	1-2ug/ml	30 min at RT. Staining of formalin-fixed tissues requires heating tissue sections in 10mM Tris with 1mM EDTA, pH 9.0, for 45 min at 95°C followed by cooling at RT for 20 minutes

### Product Details

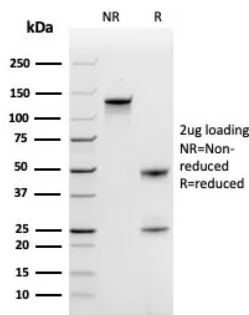
Clone	CCL18/3744
Gene Name	CCL18
Immunogen	Recombinant fragment (around aa1-89) of human CCL18 protein (exact sequence is proprietary)
Host	Mouse
Clonality	Monoclonal
Isotype / Light Chain	IgG
Mol. Weight of Antigen	7kDa
Cellular Localization	Secreted
Species Reactivity	Human
Positive Control	Human lung, lymph node, placenta or tonsil.

\*Optimal dilution for a specific application should be determined.

### Product Images for CCL18 / C-C motif chemokine ligand 18 Antibody



Formalin-fixed, paraffin-embedded human adrenal gland stained with CCL18 Mouse Monoclonal Antibody (CCL18/3744). HIER: Tris/EDTA, pH9.0, 45min. 2°: HRP-polymer, 30min. DAB, 5min.



SDS-PAGE Analysis of Purified CCL18 Mouse Monoclonal Antibody (CCL18/3744). Confirmation of Purity and Integrity of Antibody.

### Specificity & Comments

Chemokines are members of a superfamily of small inducible, secreted, proinflammatory cytokines. Members of the chemokine family exhibit 20 to 50% homology in their predicted amino acid sequences and are divided into four subfamilies. In C-C (or b) subfamily, the first two cysteines are adjacent. C-C chemokines are chemoattractants and activators for monocytes and T cells. C-C subfamily members include macrophage inflammatory protein (MIP)-1a, MIP-1b, MIP-2, MIP-3a, MIP-3b, MIP-4, HCC-1, MIP-5 (or HCC-2), RANTES, MCP-1/2/3 (and the murine homologs JE and MARC), I-309, murine C10 and TCA3. MIP-4 is constitutively expressed in several normal tissues and is highly expressed in plasma.

### Supplied As

200ug/ml of Ab purified from rabbit anti-serum by Protein A. Prepared in 10mM PBS with 0.05% BSA & 0.05% azide. Also available WITHOUT BSA at 1.0mg/ml.

### Storage and Stability

Antibody with azide - store at 2 to 8°C. Antibody without azide - store at -20 to -80°C. Antibody is stable for 24 months. Non-hazardous. No MSDS required.

### Research Areas

AKT Signaling, Cardiovascular

### Limitations and Warranty

This antibody is available for research use only and is not approved for use in diagnosis. There are no warranties, expressed or implied, which extend beyond this description. Company is not liable for any personal injury or economic loss resulting from this product.

---