

S100B (Astrocyte and Melanoma Marker) Antibody

Mouse Monoclonal Antibody [Clone S100B/4148]

| Catalog No | Format | Size |
|------------------|---|--------|
| 6285-MSM18-P0 | Purified Ab with BSA and Azide at 200ug/ml | 20 ug |
| 6285-MSM18-P1 | Purified Ab with BSA and Azide at 200ug/ml | 100 ug |
| 6285-MSM18-P1ABX | Purified Ab WITHOUT BSA and Azide at 1.0mg/ml | 100 ug |

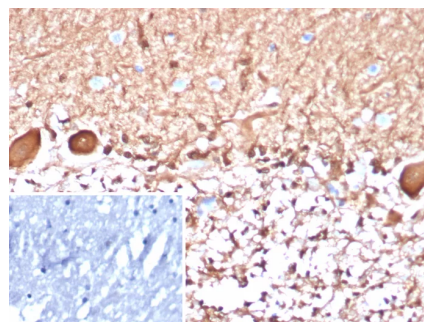
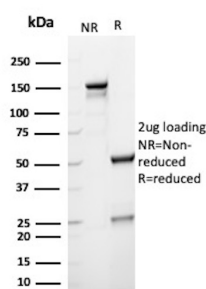
| Applications | Tested Dillution | Note |
|----------------------------|---------------------|---|
| Flow Cytometry (Flow) | 1-2ug/million cells | |
| Immunofluorescence (IF) | 1-3ug/ml | |
| Immunohistochemistry (IHC) | 1-2ug/ml | 30 min at RT. Staining of formalin-fixed tissues requires heating tissue sections in 10mM Tris with 1mM EDTA, pH 9.0, for 45 min at 95°C followed by cooling at RT for 20 minutes |
| Western Blot (WB) | 2-4ug/ml | |

Product Details

| | |
|------------------------|---|
| Clone | S100B/4148 |
| Gene Name | S100B |
| Immunogen | Recombinant fragment (around aa1-92) of human S100B protein (exact sequence is proprietary) |
| Host | Mouse |
| Clonality | Monoclonal |
| Isotype / Light Chain | IgG2c / Kappa |
| Mol. Weight of Antigen | 10-12kDa |
| Cellular Localization | Cytoplasm. Nucleus. |
| Species Reactivity | Human |
| Positive Control | Human brain or melanoma. |

**Optimal dilution for a specific application should be determined.*

Product Images for S100B (Astrocyte and Melanoma Marker) Antibody



SDS-PAGE Analysis of Purified Protein S100-B Mouse Monoclonal Antibody (S100B/4148). Confirmation of Purity and Integrity of Antibody.

Formalin-fixed, paraffin-embedded human brain stained with S100B Mouse Monoclonal Antibody (S100B/4148). Inset: PBS instead of primary antibody; secondary only negative control.

Specificity & Comments

S100 belongs to the family of calcium binding proteins. S100A and S100B proteins are two members of the S100 family. S100A is composed of an alpha and a beta chain whereas S100B is composed of two beta chains. This antibody is specific against an epitope located on the beta-chain (i.e. in S-100A and S-100B) but not on the alpha-chain of S-100 (i.e. in S-100A and S100A0). This antibody can be used to localize S-100A and S-100B in various tissue sections. S-100 protein has been found in normal melanocytes, Langerhans cells, histiocytes, chondrocytes, lipocytes, skeletal and cardiac muscle, Schwann cells, epithelial and myoepithelial cells of the breast, salivary and sweat glands, as well as in glial cells. Neoplasms derived from these cells also express S-100 protein, albeit non-uniformly. A large number of well-differentiated tumors of the salivary gland, adipose and cartilaginous tissue, and Schwann cell-derived tumors express S-100 protein. Almost all malignant melanomas and cases of histiocytosis X are positive for S-100 protein.

Limitations and Warranty

This antibody is available for research use only and is not approved for use in diagnosis. There are no warranties, expressed or implied, which extend beyond this description. Company is not liable for any personal injury or economic loss resulting from this product.

Supplied As

200ug/ml of Ab purified from Bioreactor Concentrate by Protein A/G. Prepared in 10mM PBS with 0.05% BSA & 0.05% azide. Also available WITHOUT BSA & azide at 1.0mg/ml.

Storage and Stability

Antibody with azide - store at 2 to 8°C. Antibody without azide - store at -20 to -80°C. Antibody is stable for 24 months. Non-hazardous. No MSDS required.

Research Areas

Cardiovascular, Cytokine Signaling, Dendritic Cell Marker, Immunology, Neural Stem Cells, Neuroscience, Nuclear Marker, Signal Transduction
