

S100A11 (S100 calcium binding protein A11) / Calgizzarin Antibody

Mouse Monoclonal Antibody [Clone S100A11/7392]

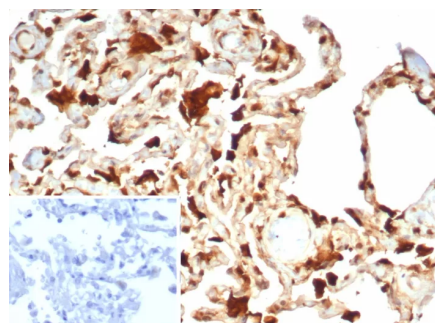
Catalog No	Format	Size
6282-MSM2-P0	Purified Ab with BSA and Azide at 200ug/ml	20 ug
6282-MSM2-P1	Purified Ab with BSA and Azide at 200ug/ml	100 ug
6282-MSM2-P1ABX	Purified Ab WITHOUT BSA and Azide at 1.0mg/ml	100 ug

Applications	Tested Dillution	Note
Immunohistochemistry (IHC)	1-2ug/ml	30 min at RT. Staining of formalin-fixed tissues requires heating tissue sections in 10mM Tris with 1mM EDTA, pH 9.0, for 45 min at 95°C followed by cooling at RT for 20 minutes

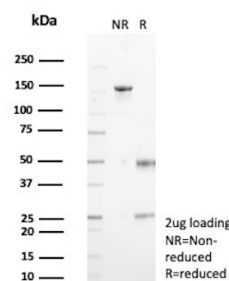
Product Details	
Clone	S100A11/7392
Gene Name	S100A11
Immunogen	Recombinant full-length human S100A11 protein
Host	Mouse
Clonality	Monoclonal
Isotype / Light Chain	IgG1 / Kappa
Mol. Weight of Antigen	11kDa
Cellular Localization	Cytoplasm. Nucleus.
Species Reactivity	Human
Positive Control	Human ovarian carcinoma or thyroid carcinoma.

*Optimal dilution for a specific application should be determined.

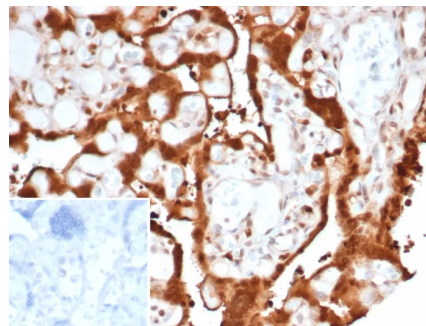
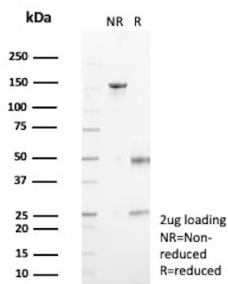
Product Images for S100A11 (S100 calcium binding protein A11) / Calgizzarin Antibody



Formalin-fixed, paraffin-embedded human lung stained with S100A11 Mouse Monoclonal Antibody (S100A11/7392). Inset: PBS instead of primary antibody; secondary only negative control.



SDS-PAGE Analysis of Purified Protein S100A11 | Protein S100A11, N-terminally processed Mouse Monoclonal Antibody (S100A11/7392). Confirmation of Purity and Integrity of Antibody.



SDS-PAGE Analysis of Purified Protein S100-A11 | Protein S100-A11, N-terminally processed Mouse Monoclonal Antibody (S100A11/7392). Confirmation of Purity and Integrity of Antibody.

Formalin-fixed, paraffin-embedded human placenta stained with S100A11 Mouse Monoclonal Antibody (S100A11/7392). Inset: PBS instead of primary antibody; secondary only negative control.

Specificity & Comments

Calgizzarin is a Ca^{2+} -binding protein of the S100 family. The proteins comprising the S-100 protein family have two EF-hand structures per molecule of protein. Expression of these family members occurs primarily in neurons or retinal photoreceptor cells, and may also be involved in a wide variety of cellular functions including cell growth, cell-cell communication, energy metabolism and intracellular signal transduction. They have also been linked to various pathologies, including Alzheimer's disease, schizophrenia and cancer. Calgizzarin is highly expressed in lung tissue and is also expressed in kidney, liver, brain, heart and smooth muscle. It is an important androgen-responsive protein produced by Sertoli cells and might play a role in spermatogenesis regulation.

Supplied As

200ug/ml of Ab purified from Bioreactor Concentrate by Protein A/G. Prepared in 10mM PBS with 0.05% BSA & 0.05% azide. Also available WITHOUT BSA & azide at 1.0mg/ml.

Storage and Stability

Antibody with azide - store at 2 to 8°C. Antibody without azide - store at -20 to -80°C. Antibody is stable for 24 months. Non-hazardous. No MSDS required.

Research Areas

Immunology, Nuclear Marker

Limitations and Warranty

This antibody is available for research use only and is not approved for use in diagnosis. There are no warranties, expressed or implied, which extend beyond this description. Company is not liable for any personal injury or economic loss resulting from this product.