

T-bet / Tbox-bet / TBX21 Antibody

Mouse Monoclonal Antibody [Clone TBX21/6724]

Catalog No	Format	Size
30009-MSM2-P0	Purified Ab with BSA and Azide at 200ug/ml	20 ug
30009-MSM2-P1	Purified Ab with BSA and Azide at 200ug/ml	100 ug
30009-MSM2-P1ABX	Purified Ab WITHOUT BSA and Azide at 1.0mg/ml	100 ug

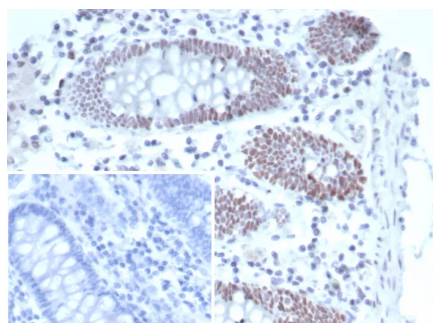
Applications	Tested Dillution	Note
Immunohistochemistry (IHC)	1-2ug/ml	30 min at RT. Staining of formalin-fixed tissues requires heating tissue sections in 10mM Tris with 1mM EDTA, pH 9.0, for 45 min at 95°C followed by cooling at RT for 20 minutes

Product Details

Clone	TBX21/6724
Gene Name	TBX21
Immunogen	Recombinant fragment (around aa 1-200) of human TBX21 protein (exact sequence is proprietary)
Host	Mouse
Clonality	Monoclonal
Isotype / Light Chain	IgG1 / Kappa
Mol. Weight of Antigen	62kDa
Cellular Localization	Nucleus.
Species Reactivity	Human
Positive Control	Human tonsil non-Hodgkin s lymphoma or spleen. T-cell specific.

**Optimal dilution for a specific application should be determined.*

Product Images for T-bet / Tbox-bet / TBX21 Antibody



IHC analysis of formalin-fixed, paraffin-embedded human colon carcinoma. T-bet / TBX21 Mouse Monoclonal Antibody (TBX21/6724). Inset: PBS instead of primary antibody; secondary only negative control.

Specificity & Comments

T helper (Th) lymphocytes differentiate into two unique subsets, Th1 and Th2, which differ both in function and in the cytokines they secrete. Th1 and Th2 cytokines promote the growth and differentiation of their subset, and inhibit the growth and differentiation of the opposing subset. T-bet (T-box expressed in T cells) is a Th1-specific T-box transcription factor that controls the expression of the Th1 cytokine, IFN- γ . T-bet also converts effector Th2 cells into the opposing Th1 subset. T-bet is selectively expressed in Th1 cells. The level of T-bet expression is increased by signals mediated by the T cell receptor (TCR). IL-12 also induces an increase in the level of T-bet. T-bet was originally isolated from nuclear extracts of resting and PMA/ionomycin-activated AE7 cells. It is expressed in low levels in AE7 cells, and in increased levels in stimulated AE7.

Supplied As

200ug/ml of Ab purified from Bioreactor Concentrate by Protein A/G. Prepared in 10mM PBS with 0.05% BSA & 0.05% azide. Also available WITHOUT BSA & azide at 1.0mg/ml.

Storage and Stability

Antibody with azide - store at 2 to 8°C. Antibody without azide - store at -20 to -80°C. Antibody is stable for 24 months. Non-hazardous. No MSDS required.

Research Areas

Cardiovascular

Limitations and Warranty

This antibody is available for research use only and is not approved for use in diagnosis. There are no warranties, expressed or implied, which extend beyond this description. Company is not liable for any personal injury or economic loss resulting from this product.
