

## CD163L1 Antibody

Mouse Monoclonal Antibody [Clone CD163L1/7971]

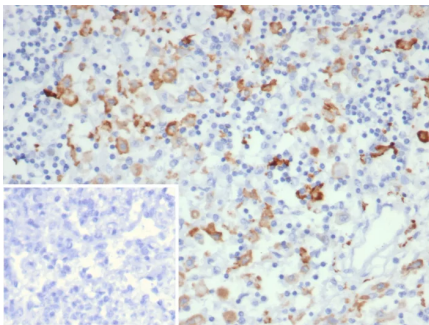
| Catalog No        | Format  | Size   |
|-------------------|---|--------|
| 283316-MSM1-P0    | Purified Ab with BSA and Azide at 200ug/ml    | 20 ug  |
| 283316-MSM1-P1    | Purified Ab with BSA and Azide at 200ug/ml    | 100 ug |
| 283316-MSM1-P1ABX | Purified Ab WITHOUT BSA and Azide at 1.0mg/ml | 100 ug |

| Applications               | Tested Dillution | Note  |
|----------------------------|------------------|---|
| Immunohistochemistry (IHC) | 1-2ug/ml         | 30 min at RT. Staining of formalin-fixed tissues requires heating tissue sections in 10mM Tris with 1mM EDTA, pH 9.0, for 45 min at 95°C followed by cooling at RT for 20 minutes |

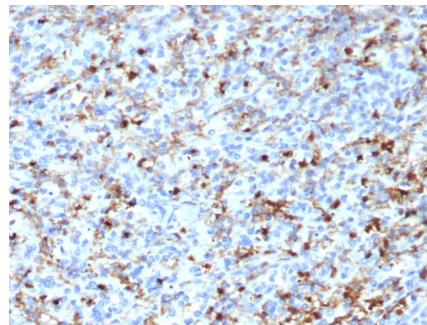
| Product Details        |   |
|------------------------|---|
| Clone                  | CD163L1/7971  |
| Gene Name              | CD163L1   |
| Immunogen              | Recombinant fragment of human CD163L1 protein (exact sequence is proprietary) |
| Host                   | Mouse   |
| Clonality              | Monoclonal  |
| Isotype / Light Chain  | IgG   |
| Mol. Weight of Antigen | 159kDa  |
| Cellular Localization  | Cytoplasm.  |
| Species Reactivity     | Human   |
| Positive Control       | Human lymphoid tissue.  |

*\*Optimal dilution for a specific application should be determined.*

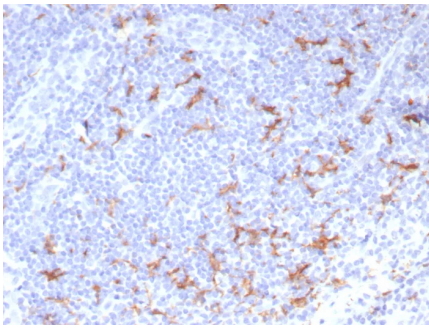
### Product Images for CD163L1 Antibody



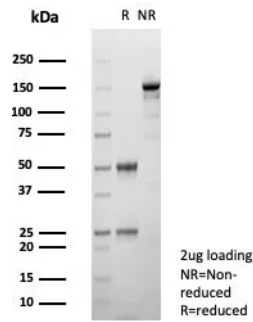
Formalin-fixed, paraffin-embedded human lymph node stained with CD163L1 Mouse Monoclonal Antibody (CD163L1/7971). Inset: PBS instead of primary antibody; secondary only negative control.



Formalin-fixed, paraffin-embedded human spleen stained with CD163L1 Mouse Monoclonal Antibody (CD163L1/7971). HIER: Tris/EDTA, pH9.0, 45min. 2°C: HRP-polymer, 30min. DAB, 5min.



Formalin-fixed, paraffin-embedded human tonsil stained with CD163L1 Mouse Monoclonal Antibody (CD163L1/7971). HIER: Tris/EDTA, pH9.0, 45min. 2°C: HRP-polymer, 30min. DAB, 5min.



SDS-PAGE Analysis of Purified CD163L1 Mouse Monoclonal Antibody (CD163L1/7971). Confirmation of Purity and Integrity of Antibody.

### Specificity & Comments

CD163L1 (CD163 molecule-like 1), also known as scavenger receptor cysteine-rich type 1 protein M160 or CD163B, is a 1,453 amino acid protein that belongs to the scavenger receptor cysteine-rich (SRCR) superfamily. Members of the SRCR family contain SRCR domains which are used to influence ligand binding and protein-protein interaction, and are found in cells of the immune system where they exist as membrane-anchored or secreted proteins. Containing 12 SRCR domains, CD163L1 undergoes alternative splicing events to produce 3 isoforms. CD163L1 isoforms 1 and 2 are single-pass type I membrane proteins, unlike isoform 3, which is a secreted protein. CD163L1 isoform 1 is abundantly expressed in lymph node, spleen, thymus and fetal liver, and isoform 2 is found exclusively in spleen. The gene encoding CD163L1 maps to human chromosome 12p13.31.

### Limitations and Warranty

This antibody is available for research use only and is not approved for use in diagnosis. There are no warranties, expressed or implied, which extend beyond this description. Company is not liable for any personal injury or economic loss resulting from this product.

### Supplied As

200ug/ml of Ab purified from Bioreactor Concentrate by Protein A/G. Prepared in 10mM PBS with 0.05% BSA & 0.05% azide. Also available WITHOUT BSA & azide at 1.0mg/ml.

### Storage and Stability

Antibody with azide - store at 2 to 8°C. Antibody without azide - store at -20 to -80°C. Antibody is stable for 24 months. Non-hazardous. No MSDS required.