

## Recombinant FOXP1 (Transcription Factor) Antibody

Rabbit Monoclonal Antibody [Clone FOXP1/9381R]

Catalog No	Format	Size
27086-RBM4-P0	Purified Ab with BSA and Azide at 200ug/ml	20 ug
27086-RBM4-P1	Purified Ab with BSA and Azide at 200ug/ml	100 ug
27086-RBM4-P1ABX	Purified Ab WITHOUT BSA and Azide at 1.0mg/ml	100 ug

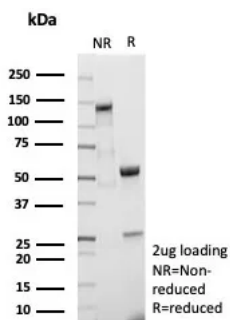
Applications	Tested Dillution	Note
Immunohistochemistry (IHC)	1-2ug/ml	30 min at RT. Staining of formalin-fixed tissues requires heating tissue sections in 10mM Tris with 1mM EDTA, pH 9.0, for 45 min at 95°C followed by cooling at RT for 20 minutes
Western Blot (WB)	2-4ug/ml	

### Product Details

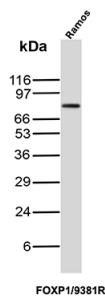
<b>Clone</b>	FOXP1/9381R
<b>Gene Name</b>	FOXP1
<b>Immunogen</b>	Recombinant fragment (around aa350-450) of human FOXP1 protein (exact sequence is proprietary)
<b>Host</b>	Rabbit
<b>Clonality</b>	Monoclonal
<b>Isotype / Light Chain</b>	IgG / Kappa
<b>Mol. Weight of Antigen</b>	75kDa
<b>Cellular Localization</b>	Nucleus.
<b>Species Reactivity</b>	Human
<b>Positive Control</b>	Human tonsil or colon. Ramos

\*Optimal dilution for a specific application should be determined.

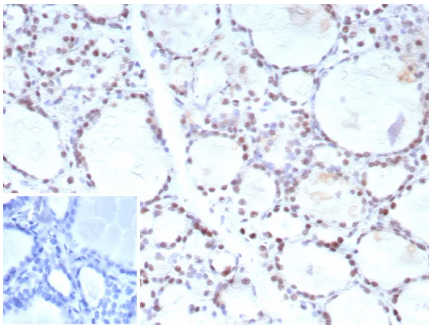
### Product Images for Recombinant FOXP1 (Transcription Factor) Antibody



SDS-PAGE Analysis of Purified FOXP1 Recombinant Rabbit Monoclonal Antibody (FOXP1/9381R). Confirmation of Purity and Integrity of Antibody.



Western Blot analysis of Ramos cell lysate using FOXP1 Recombinant Rabbit Monoclonal Antibody (FOXP1/9381R).



Formalin-fixed, paraffin-embedded human prostate carcinoma stained with FOXP1 Recombinant Rabbit Monoclonal Antibody (FOXP1/9381R). Inset: PBS instead of primary antibody; secondary only negative control.

---

### Specificity & Comments

Transcriptional repressor. It plays an important role in the specification and differentiation of lung epithelium. Can act with CTBP1 to synergistically repress transcription but CTPBP1 is not essential. Essential transcriptional regulator of B cell development. FOXP1 protein plays an important role in the specification and differentiation of lung epithelium, also acts cooperatively with FOXP4 to regulate lung secretory epithelial cell fate and regeneration by restricting the goblet cell lineage program. FOXP1 is useful in subclassification of DLBCL and a high cutoff ( ? ?80%) for FOXP1 is needed to achieve high specificity for the ABC subtype.

---

### Limitations and Warranty

This antibody is available for research use only and is not approved for use in diagnosis. There are no warranties, expressed or implied, which extend beyond this description. Company is not liable for any personal injury or economic loss resulting from this product.

---

### Supplied As

200ug/ml of Ab produced in CHO cell mammalian-based expression system. Prepared in 10mM PBS with 0.05% BSA & 0.05% azide. Also available WITHOUT BSA & azide at 1.0mg/ml.

---

### Storage and Stability

Antibody with azide - store at 2 to 8°C. Antibody without azide - store at -20 to -80°C. Antibody is stable for 24 months. Non-hazardous. No MSDS required.

---

### Research Areas

B Cell Markers, Cardiovascular, Developmental Biology, Nuclear Marker

---