

S100A16 (S100 calcium binding protein A16) Antibody

Mouse Monoclonal Antibody [Clone S100A16/7411]

Catalog No	Format	Size
140576-MSM1-P0	Purified Ab with BSA and Azide at 200ug/ml	20 ug
140576-MSM1-P1	Purified Ab with BSA and Azide at 200ug/ml	100 ug
140576-MSM1-P1ABX	Purified Ab WITHOUT BSA and Azide at 1.0mg/ml	100 ug

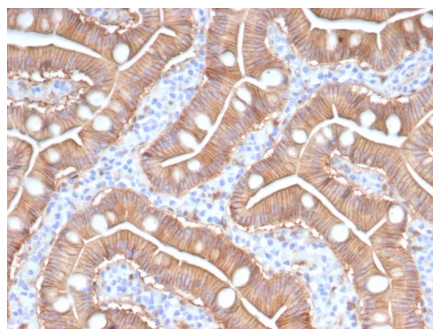
Applications	Tested Dillution	Note
Immunohistochemistry (IHC)	1-2ug/ml	30 min at RT. Staining of formalin-fixed tissues requires heating tissue sections in 10mM Tris with 1mM EDTA, pH 9.0, for 45 min at 95°C followed by cooling at RT for 20 minutes
Western Blot (WB)	2-4ug/ml	

Product Details

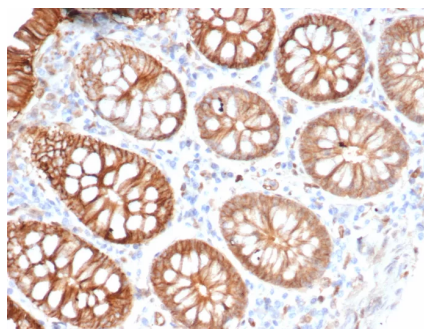
Clone	S100A16/7411
Gene Name	S100A16
Immunogen	Recombinant fragment (around aa1-103) of human S100A16 protein (exact sequence is proprietary)
Host	Mouse
Clonality	Monoclonal
Isotype / Light Chain	IgG2 / Kappa
Mol. Weight of Antigen	12kDa
Cellular Localization	Nucleus. Cytoplasm.
Species Reactivity	Human
Positive Control	SK-BR-3., Human esophagus or skin.

*Optimal dilution for a specific application should be determined.

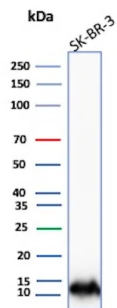
Product Images for S100A16 (S100 calcium binding protein A16) Antibody



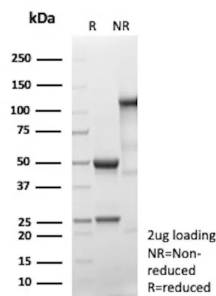
Formalin-fixed, paraffin-embedded human skin stained with S100A16 Mouse Monoclonal Antibody (S100A16/7411). HIER: Tris/EDTA, pH9.0, 45min. 2°C: HRP-polymer, 30min. DAB, 5min.



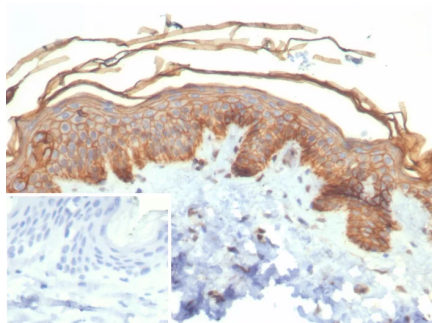
Formalin-fixed, paraffin-embedded human colon carcinoma stained with S100A16 Mouse Monoclonal Antibody (S100A16/7411). HIER: Tris/EDTA, pH9.0, 45min. 2°C: HRP-polymer, 30min. DAB, 5min.



Western Blot Analysis of SK-BR-3 lysate using S100A16 Mouse Monoclonal Antibody (S100A16/7411).



SDS-PAGE Analysis Purified S100A16 Mouse Monoclonal Antibody (S100A16/7411). Confirmation of Purity and Integrity of Antibody.



Formalin-fixed, paraffin-embedded human duodenum stained with S100A16 Mouse Monoclonal Antibody (S100A16/7411). HIER: Tris/EDTA, pH9.0, 45min. 2°C: HRP-polymer, 30min. DAB, 5min.

Specificity & Comments

The S-100 protein family consists of a group of calcium-binding proteins that are exclusively expressed in vertebrates and exhibit cell and tissue-specific expression. The expression levels of its members differ in various pathological conditions. The extracellular functions of the S-100 family may include the ability to enhance neurite outgrowth, involvement in inflammation and motility of tumor cells. S-100A16 (S100 calcium binding protein A16), also known as AAG13 (aging-associated gene 13 protein), S100F or DT1P1A7, is a 103 amino acid nuclear and cytoplasmic protein that exists as a homodimer that binds one calcium ion per monomer. A member of the EF-hand superfamily, S-100A16 contains two EF-hand domains and is encoded by a gene that maps to human chromosome 1q21.3.

Limitations and Warranty

This antibody is available for research use only and is not approved for use in diagnosis. There are no warranties, expressed or implied, which extend beyond this description. Company is not liable for any personal injury or economic loss resulting from this product.

Supplied As

200ug/ml of Ab purified from Bioreactor Concentrate by Protein A/G. Prepared in 10mM PBS with 0.05% BSA & 0.05% azide. Also available WITHOUT BSA & azide at 1.0mg/ml.

Storage and Stability

Antibody with azide - store at 2 to 8°C. Antibody without azide - store at -20 to -80°C. Antibody is stable for 24 months. Non-hazardous. No MSDS required.