

IL22RA2 Antibody

Mouse Monoclonal Antibody [Clone IL22RA2/7291]

Catalog No	Format	Size
116379-MSM1-P0	Purified Ab with BSA and Azide at 200ug/ml	20 ug
116379-MSM1-P1	Purified Ab with BSA and Azide at 200ug/ml	100 ug
116379-MSM1-P1ABX	Purified Ab WITHOUT BSA and Azide at 1.0mg/ml	100 ug

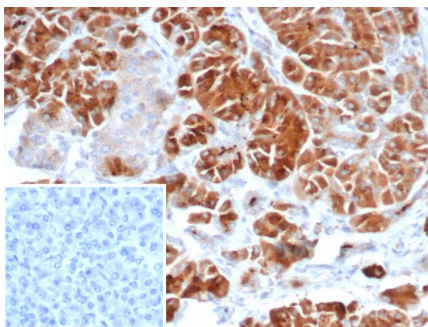
Applications	Tested Dillution	Note
Immunohistochemistry (IHC)	1-2ug/ml	30 min at RT. Staining of formalin-fixed tissues requires heating tissue sections in 10mM Tris with 1mM EDTA, pH 9.0, for 45 min at 95°C followed by cooling at RT for 20 minutes

Product Details

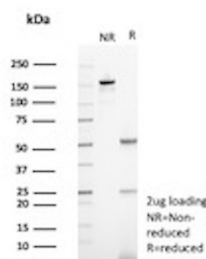
Clone	IL22RA2/7291
Gene Name	IL22RA2
Immunogen	Recombinant fragment (around aa1-200) of human IL22RA2 protein (exact sequence is proprietary)
Host	Mouse
Clonality	Monoclonal
Isotype / Light Chain	IgG2 / Kappa
Mol. Weight of Antigen	27 kDa
Cellular Localization	Secreted.
Species Reactivity	Human
Positive Control	carcinoma or liver. colon Human tonsil

*Optimal dilution for a specific application should be determined.

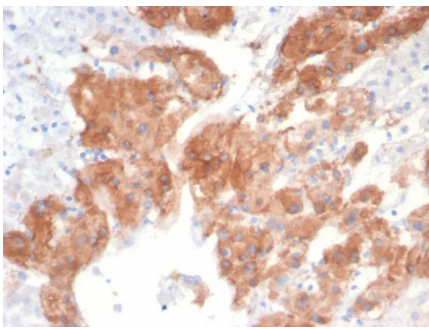
Product Images for IL22RA2 Antibody



Formalin-fixed, paraffin-embedded human adrenal gland stained with IL22RA2 Mouse Monoclonal Antibody (IL22RA2/7291). Inset: PBS instead of primary antibody; secondary only negative control.



SDS-PAGE Analysis of Purified Interleukin-22 receptor subunit alpha-2 Mouse Monoclonal Antibody (IL22RA2/7291). Confirmation of Purity and Integrity of Antibody.



Formalin-fixed, paraffin-embedded human adrenal gland stained with IL22RA2 Mouse Monoclonal Antibody (IL22RA2/7291). HIER: Tris/EDTA, pH9.0, 45min. 2°C: HRP-polymer, 30min. DAB, 5min.

Specificity & Comments

IL-22R β (Interleukin-22 receptor β chain), also known as IL-22 binding protein (IL-22BP), cytokine receptor family class II member 10 (CRF2-10) or CRF2- soluble 1 (CRF2-S1), is a soluble, non-signaling single chain receptor for IL-22. It is highly expressed in intestine and lymph nodes and is also found in spleen, kidney and liver. IL-22R β has a cytokine-binding domain that contains two FnIII domains. Its affinity for IL-22 is 4- to 10-fold higher than that of the membrane-bound IL-22 receptor, however it has a dissociation rate up to 20 times lower. By binding to IL-22, IL-22R β prevents the binding to the IL-22 membrane-bound receptor and therefore inhibits IL-22 signaling. This suggests that IL-22R β may be important in regulating inflammatory responses. In addition, IL-22R β can be induced by lipopolysaccharides (LPSs).

Limitations and Warranty

This antibody is available for research use only and is not approved for use in diagnosis. There are no warranties, expressed or implied, which extend beyond this description. Company is not liable for any personal injury or economic loss resulting from this product.

Supplied As

200ug/ml of Ab purified from Bioreactor Concentrate by Protein A/G. Prepared in 10mM PBS with 0.05% BSA & 0.05% azide. Also available WITHOUT BSA & azide at 1.0mg/ml.

Storage and Stability

Antibody with azide - store at 2 to 8°C. Antibody without azide - store at -20 to -80°C. Antibody is stable for 24 months. Non-hazardous. No MSDS required.

Research Areas

Cardiovascular, Immunology, Cytokine Signaling
