

S100A5 Antibody

Mouse Monoclonal Antibody [Clone S100A5/7474]

Catalog No	Format	Size
6276-MSM4-P0	Purified Ab with BSA and Azide at 200ug/ml	20 ug
6276-MSM4-P1	Purified Ab with BSA and Azide at 200ug/ml	100 ug
6276-MSM4-P1ABX	Purified Ab WITHOUT BSA and Azide at 1.0mg/ml	100 ug

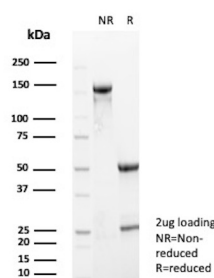
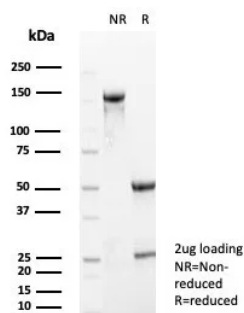
Applications	Tested Dillution	Note
Immunohistochemistry (IHC)	1-2ug/ml	30 min at RT. Staining of formalin-fixed tissues requires heating tissue sections in 10mM Tris with 1mM EDTA, pH 9.0, for 45 min at 95°C followed by cooling at RT for 20 minutes

Product Details

Clone	S100A5/7474
Gene Name	S100A5
Immunogen	Recombinant fragment (around aa1-92) of human S100A5 protein (exact sequence is proprietary)
Host	Mouse
Clonality	Monoclonal
Isotype / Light Chain	IgG2a / Kappa
Mol. Weight of Antigen	11kDa
Cellular Localization	Nucleus. Cytoplasm.
Species Reactivity	Human
Positive Control	Human brain or colon.

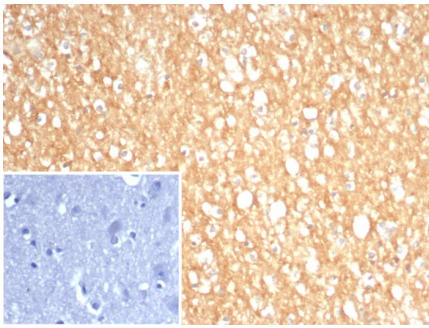
*Optimal dilution for a specific application should be determined.

Product Images for S100A5 Antibody



Formalin-fixed, paraffin-embedded human brain stained with S100A5 Mouse Monoclonal Antibody (S100A5/7474). Inset: PBS instead of primary antibody; secondary only negative control.

SDS-PAGE Analysis of Purified Protein S100A5 Mouse Monoclonal Antibody (S100A5/7474). Confirmation of Purity and Integrity of Antibody.



Formalin-fixed, paraffin-embedded human brain stained with S100A5 Mouse Monoclonal Antibody (S100A5/7474). Inset: PBS instead of primary antibody; secondary only negative control.

Specificity & Comments

The S-100 proteins are small calcium-binding proteins which display different expression patterns in human tissues. Some S-100 proteins are associated with tumor development and the metastatic behavior of tumors. S-100A5 (S100 calcium binding protein A5) is a 92 amino acid protein that belongs to the S-100 family. Containing two EF-hand domains, S-100A5 binds calcium, zinc and copper. One subunit can simultaneously bind two calcium ions or two copper ions plus one zinc ion. Calcium and copper ions compete for the same binding sites on the S-100A5 protein. The S-100A5 protein is expressed in very restricted regions of the adult brain. The S-100A5 gene is conserved in chimpanzee, dog, cow, mouse and rat, and maps to human chromosome 1q21.3. S100 genes include at least 13 members which are located as a cluster on chromosome 1q21. Due to the clustered organization of the S-100 proteins a new logical nomenclature based on their physical arrangement on the chromosome has been described, with S-100A1 being closest to the telomere and S-100A9 being closest to the centromere.

Limitations and Warranty

This antibody is available for research use only and is not approved for use in diagnosis. There are no warranties, expressed or implied, which extend beyond this description. Company is not liable for any personal injury or economic loss resulting from this product.

Supplied As

200ug/ml of Ab purified from Bioreactor Concentrate by Protein A/G. Prepared in 10mM PBS with 0.05% BSA & 0.05% azide. Also available WITHOUT BSA & azide at 1.0mg/ml.

Storage and Stability

Antibody with azide - store at 2 to 8°C. Antibody without azide - store at -20 to -80°C. Antibody is stable for 24 months. Non-hazardous. No MSDS required.