

## S100A2 / S100 Calcium Binding Protein A2 Antibody

Mouse Monoclonal Antibody [Clone S100A2/6925]

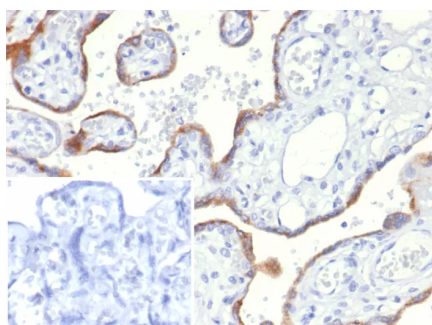
Catalog No	Format	Size
6273-MSM5-P0	Purified Ab with BSA and Azide	200ug/ml
6273-MSM5-P1	Purified Ab with BSA and Azide	200ug/ml
6273-MSM5-P1ABX	Purified Ab WITHOUT BSA and Azide	1.0mg/ml

Applications	Tested Dillution
Immunohistochemistry (IHC)	1-2ug/ml

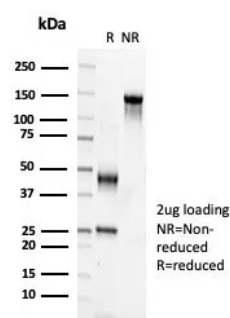
Product Details	
Clone	S100A2/6925
Gene Name	S100A2
Immunogen	Recombinant full-length human S100A2 protein
Host	Mouse
Clonality	Monoclonal
Isotype / Light Chain	IgG2b / Kappa
Mol. Weight of Antigen	11.12kDa
Cellular Localization	Nucleus. Cytoplasm.
Species Reactivity	Human
Positive Control	and A431 cell lysates; Skin and squamous cell cervical carcinoma.[BxPC3] HACAT HeLa. A549

*\*Optimal dilution for a specific application should be determined.*

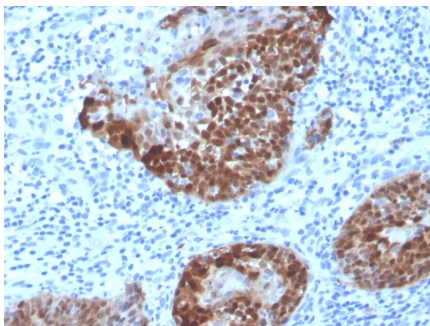
### Product Images for S100A2 / S100 Calcium Binding Protein A2 Antibody



Formalin-fixed, paraffin-embedded human placenta stained with S100A2 Mouse Monoclonal Antibody (S100A2/6925). Inset: PBS instead of primary antibody; secondary only negative control.



SDS-PAGE Analysis of Purified S100A2 Mouse Monoclonal Antibody (S100A2/6925). Confirmation of Purity and Integrity of Antibody.



Formalin-fixed, paraffin-embedded human cervix stained with S100A2 Mouse Monoclonal Antibody (S100A2/6925). HIER: Tris/EDTA, pH9.0, 45min. 2°C: HRP-polymer, 30min. DAB, 5min.

---

### Specificity & Comments

S100A2 belongs to the S100 family of proteins containing 2 EF-hand calcium-binding motifs. S100A2 may function as a modulator against excess calcium accumulation in normal human mammary epithelial cells and also have a role in suppressing tumor cell growth. This protein may have a tumor suppressor function. Chromosomal rearrangements and altered expression of this gene have been implicated in breast cancer. Cytoplasmic overexpression may also be of prognostic significance when observed in oral cancer patients, and the S100A2 has also been identified as significantly down regulated in gastric cancer.

---

### Known Applications & Suggested Dilutions

Immunohistochemistry (Formalin-fixed) (1-2ug/ml for 30 minutes at RT),(Staining of formalin-fixed tissues requires heating tissue sections in 10mM Tris with 1mM EDTA, pH 9.0, for 45 min at 95&degC followed by cooling at RT for 20 minutes),Optimal dilution for a specific application should be determined.

---

### Limitations and Warranty

This antibody is available for research use only and is not approved for use in diagnosis.

There are no warranties, expressed or implied, which extend beyond this description. Company is not liable for any personal injury or economic loss resulting from this product.

---

### Supplied As

200ug/ml of Ab purified from Bioreactor Concentrate by Protein A/G. Prepared in 10mM PBS with 0.05% BSA & 0.05% azide. Also available WITHOUT BSA & azide at 1.0mg/ml.

---

### Storage and Stability

Antibody with azide - store at 2 to 8°C. Antibody without azide - store at -20 to -80°C.Antibody is stable for 24 months. Non-hazardous. No MSDS required.

---