

Recombinant Bcl-X (Apoptosis Marker) Antibody

Rabbit Monoclonal Antibody [Clone BCL2L1/9221R]

Catalog No	Format	Size
598-RBM11-P0	Purified Ab with BSA and Azide at 200ug/ml	20 ug
598-RBM11-P1	Purified Ab with BSA and Azide at 200ug/ml	100 ug
598-RBM11-P1ABX	Purified Ab WITHOUT BSA and Azide at 1.0mg/ml	100 ug

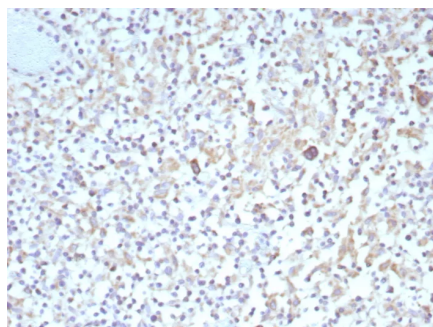
Applications	Tested Dillution	Note
Immunohistochemistry (IHC)	1-2ug/ml	30 min at RT. Staining of formalin-fixed tissues requires heating tissue sections in 10mM Tris with 1mM EDTA, pH 9.0, for 45 min at 95°C followed by cooling at RT for 20 minutes
Western Blot (WB)	2-4ug/ml	

Product Details

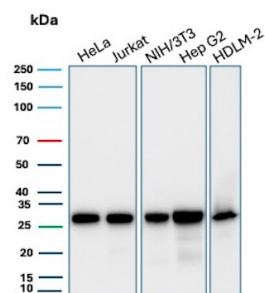
Clone	BCL2L1/9221R
Gene Name	BCL2L1
Immunogen	Recombinant fragment (around aa1-100) of human BCL2L1 protein (exact sequence is proprietary)
Host	Rabbit
Clonality	Monoclonal
Isotype / Light Chain	IgG / Kappa
Mol. Weight of Antigen	27kDa
Cellular Localization	Cytoplasm. Cell membrane. Nuclear membrane.
Species Reactivity	Hamster, Human, Rat
Positive Control	HeLa, Jurkat, NIH/3T3, Hep G2 and HDLM-2, HL-60. Reed-Sternberg cells in Hodgkin s lymphoma.K562, Human Kidney, Rat Kidney or Hamster Kidney

**Optimal dilution for a specific application should be determined.*

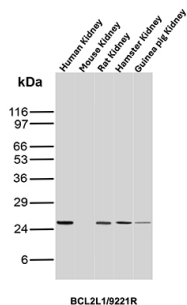
Product Images for Recombinant Bcl-X (Apoptosis Marker) Antibody



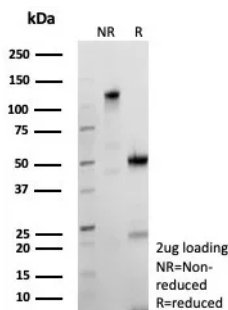
Formalin-fixed, paraffin-embedded human Hodgkin's lymphoma stained with Bcl-X Recombinant Rabbit Monoclonal Antibody (BCL2L1/9221R). HIER: Tris/EDTA, pH9.0, 45min. 2°C: HRP-polymer, 30min. DAB, 5min.



Western Blot Analysis of HeLa, Jurkat, NIH/3T3, Hep G2 and HDLM-2 cell lysates using Bcl-X Recombinant Rabbit Monoclonal Antibody (BCL2L1/9221R).



Western blot analysis of Human Kidney, Mouse Kidney, Rat Kidney, Hamster Kidney and Guinea pig Kidney tissue lysates using Bcl-X Recombinant Rabbit Monoclonal Antibody (BCL2L1/9221R).



SDS-PAGE Analysis of Purified Bcl-x Recombinant Rabbit Monoclonal Antibody (BCL2L1/9221R). Confirmation of Purity and Integrity of Antibody.

Specificity & Comments

Recognizes a protein of 27kDa, identified as the Bcl-X protein. This MAb shows no cross-reaction with Bcl-2? or Bax protein. Bcl-X has two isoforms, Bcl-XL (long), a 241-amino acid protein which suppresses cell death. And Bcl-XS (short), a 178-amino acid protein lacking a 63-amino acid domain which functions as a dominant inhibitor of Bcl-2.

Supplied As

200ug/ml of Ab purified from Bioreactor Concentrate by Protein A/G. Prepared in 10mM PBS with 0.05% BSA & 0.05% azide. Also available WITHOUT BSA & azide at 1.0mg/ml.

Storage and Stability

Antibody with azide - store at 2 to 8°C. Antibody without azide - store at -20 to -80°C. Antibody is stable for 24 months. Non-hazardous. No MSDS required.

Research Areas

Apoptosis, Autophagy, Cardiovascular, Colon Cancer, Cytokine Signaling, Immunology, Infectious Disease, Lung Cancer, Mitochondria Marker, Signal Transduction

Limitations and Warranty

This antibody is available for research use only and is not approved for use in diagnosis. There are no warranties, expressed or implied, which extend beyond this description. Company is not liable for any personal injury or economic loss resulting from this product.