

PLK1 Antibody

Mouse Monoclonal Antibody [Clone PLK1/7122]

Catalog No	Format	Size
5347-MSM2-P0	Purified Ab with BSA and Azide at 200ug/ml	20 ug
5347-MSM2-P1	Purified Ab with BSA and Azide at 200ug/ml	100 ug
5347-MSM2-P1ABX	Purified Ab WITHOUT BSA and Azide at 1.0mg/ml	100 ug

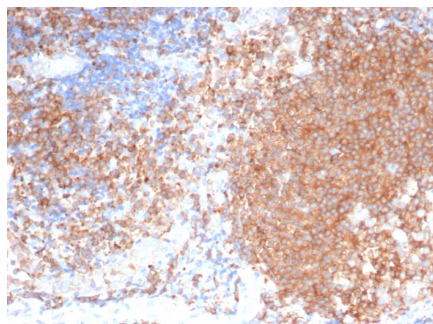
Applications	Tested Dillution	Note
Immunohistochemistry (IHC)	1-2ug/ml	30 min at RT. Staining of formalin-fixed tissues requires heating tissue sections in 10mM Tris with 1mM EDTA, pH 9.0, for 45 min at 95°C followed by cooling at RT for 20 minutes

Product Details

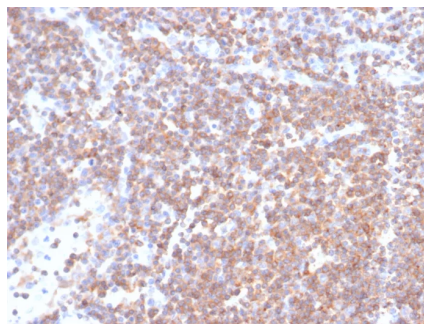
Clone	PLK1/7122
Gene Name	plk1
Immunogen	Recombinant fragment of human PLK1 protein (around aa 1-200) (exact sequence is proprietary)
Host	Mouse
Clonality	Monoclonal
Isotype / Light Chain	IgG1 / Kappa
Mol. Weight of Antigen	66kDa
Cellular Localization	Nucleus.
Species Reactivity	Human
Positive Control	Human tonsil spleen or thymus.

**Optimal dilution for a specific application should be determined.*

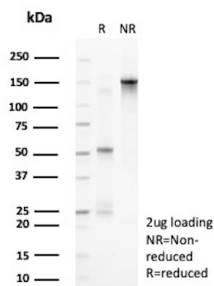
Product Images for PLK1 Antibody



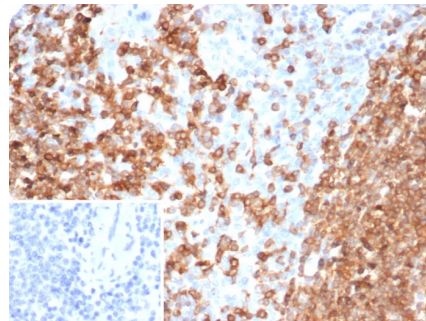
Formalin-fixed, paraffin-embedded human tonsil stained with PLK1 Mouse Monoclonal Antibody (PLK1/7122). HIER: Tris/EDTA, pH9.0, 45min. 2°C: HRP-polymer, 30min. DAB, 5min.



Formalin-fixed, paraffin-embedded human lymph node stained with PLK1 Mouse Monoclonal Antibody (PLK1/7122). HIER: Tris/EDTA, pH9.0, 45min. 2°C: HRP-polymer, 30min. DAB, 5min.



SDS-PAGE Analysis of Purified Serine/threonine-protein kinase PLK1 Mouse Monoclonal Antibody (PLK1/7122). Confirmation of Purity and Integrity of Antibody.



Formalin-fixed, paraffin-embedded human spleen stained with PLK1 Mouse Monoclonal Antibody (PLK1/7122). Inset: PBS instead of primary antibody; secondary only negative control.

Specificity & Comments

Plk (for polo-like kinase) encodes a serine/threonine kinase that is closely related to polo and CDC5, genes that are required for passage through mitosis in *Drosophila* and *Saccharomyces*, respectively. Polo and CDC5 both code for proteins that are involved in regulating the function of the mitotic spindle. Plk protein accumulates in the cell during the S and G2 phases of the cell cycle; Plk protein content and catalytic activity peak at the onset of mitosis, followed by a rapid reduction after mitosis. Plk expression is detectable in mitotically active tissues such as colon and placenta, as well as in tumors of various origins. It has also been suggested that Plk may serve as a marker of cell proliferation.

Supplied As

200ug/ml of Ab purified from Bioreactor Concentrate by Protein A/G. Prepared in 10mM PBS with 0.05% BSA & 0.05% azide. Also available WITHOUT BSA & azide at 1.0mg/ml.

Storage and Stability

Antibody with azide - store at 2 to 8°C. Antibody without azide - store at -20 to -80°C. Antibody is stable for 24 months. Non-hazardous. No MSDS required.

Research Areas

Signal Transduction

Limitations and Warranty

This antibody is available for research use only and is not approved for use in diagnosis. There are no warranties, expressed or implied, which extend beyond this description. Company is not liable for any personal injury or economic loss resulting from this product.