

## S100A1 (Melanoma Marker) Antibody

Rabbit Monoclonal Antibody [Clone S100A1/9244R]

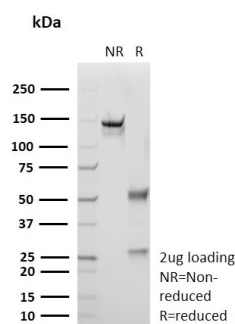
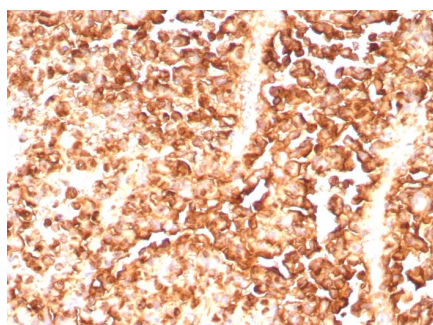
Catalog No	Format	Size
6271-RBM6-P0	Purified Ab with BSA and Azide	200ug/ml
6271-RBM6-P1	Purified Ab with BSA and Azide	200ug/ml
6271-RBM6-P1ABX	Purified Ab WITHOUT BSA and Azide	1.0mg/ml

Applications	Tested Dillution
Immunohistochemistry (IHC)	1-2ug/ml

Product Details	
Clone	S100A1/9244R
Gene Name	S100A1
Immunogen	Recombinant fragment (around aa1-94) of human S100A1 protein (exact sequence is proprietary)
Host	Rabbit
Clonality	Monoclonal
Isotype / Light Chain	IgG / Kappa
Mol. Weight of Antigen	10-12kDa
Cellular Localization	Cytoplasm
Species Reactivity	Human
Positive Control	Human brain or melanoma.

*\*Optimal dilution for a specific application should be determined.*

### Product Images for S100A1 (Melanoma Marker) Antibody



Formalin-fixed, paraffin-embedded human melanoma stained with S100A1 Rabbit Monoclonal Antibody (S100A1/9244R). HIER: Tris/EDTA, pH9.0, 45min. 2°C: HRP-polymer, 30min. DAB, 5min.

SDS PAGE Analysis Purified S100A1 Rabbit Monoclonal Antibody (S100A1/9244R). Confirmation of Purity and Integrity of Antibody.

### Specificity & Comments

S100 belongs to the family of calcium binding proteins. S100A and S100B proteins are two members of the S100 family. S100A is composed of an alpha and a beta chain whereas S100B is composed of two beta chains. This antibody is specific against an epitope located on the alpha-chain (i.e. in S-100A and S-100B) but not on the beta-chain of S-100 (i.e. in S-100B). This antibody can be used to localize S-100A in various tissue sections. S-100 protein has been found in normal melanocytes, Langerhans cells, histiocytes, chondrocytes, lipocytes, skeletal and cardiac muscle, epithelial and myoepithelial cells of the breast, salivary and sweat glands. Neoplasms derived from these cells also express S-100 protein. Almost all malignant melanomas and cases of histiocytosis X are positive for S-100 protein.

---

### Research Areas

Immunology, Infectious Disease

---

### Known Applications & Suggested Dilutions

Immunohistochemistry (Formalin-fixed) (1-2ug/ml for 30 minutes at RT),(Staining of formalin-fixed tissues requires heating tissue sections in 10mM Tris with 1mM EDTA, pH 9.0, for 45 min at 95&degC followed by cooling at RT for 20 minutes),Optimal dilution for a specific application should be determined.

---

### Limitations and Warranty

This antibody is available for research use only and is not approved for use in diagnosis.

There are no warranties, expressed or implied, which extend beyond this description. Company is not liable for any personal injury or economic loss resulting from this product.

---

### Supplied As

200ug/ml of Ab purified from Bioreactor Concentrate by Protein A/G. Prepared in 10mM PBS with 0.05% BSA & 0.05% azide. Also available WITHOUT BSA & azide at 1.0mg/ml.

---

### Storage and Stability

Antibody with azide - store at 2 to 8°C. Antibody without azide - store at -20 to -80°C. Antibody is stable for 24 months. Non-hazardous. No MSDS required.

---