

Recombinant PCNA (Proliferating Cell Nuclear Antigen) (G1- & S-phase Marker) Antibody

Rabbit Monoclonal Antibody [Clone PCNA/8696R]

Catalog No	Format	Size
5111-RBM10-P0	Purified Ab with BSA and Azide at 200ug/ml	20 ug
5111-RBM10-P1	Purified Ab with BSA and Azide at 200ug/ml	100 ug
5111-RBM10-P1ABX	Purified Ab WITHOUT BSA or Azide at 1.0mg/ml	100 ug

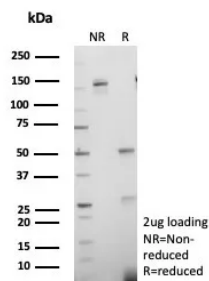
Applications	Tested Dillution	Note
Immunohistochemistry (IHC)	1-2ug/ml	30 min at RT. Staining of formalin-fixed tissues requires heating tissue sections in 10mM Tris with 1mM EDTA, pH 9.0, for 45 min at 95°C followed by cooling at RT for 20 minutes
Western Blot (WB)	2-4ug/ml	

Product Details

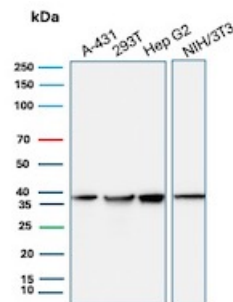
Clone	PCNA/8696R
Immunogen	Rat PCNA/Protein A fusion protein
Host	Rabbit
Clonality	Monoclonal
Isotype / Light Chain	IgG / Kappa
Mol. Weight of Antigen	28.77kDa
Cellular Localization	Nucleus
Species Reactivity	Human
Positive Control	A-431, 293T, Hep G2, NIH/3T3, Raji cells, Human Prostate

*Optimal dilution for a specific application should be determined.

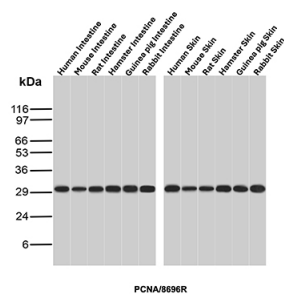
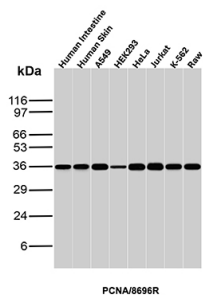
Product Images for Recombinant PCNA (Proliferating Cell Nuclear Antigen) (G1- & S-phase Marker) Antibody



SDS-PAGE Analysis of Purified PCNA Recombinant Rabbit Monoclonal Antibody (PCNA/8696R). Confirmation of Purity and Integrity of Antibody.

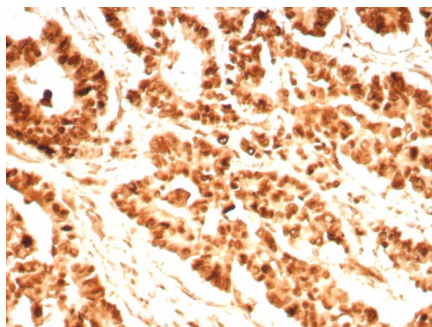


Western Blot Analysis of A-431, 293T, Hep G2 and NIH/3T3 cell lysates using PCNA Recombinant Rabbit Monoclonal Antibody (PCNA/8696R).



Western Blot Analysis of Human Intestine, Human Skin, A549, HEK293, HeLa, Jurkat, K-562 and Raw lysates using PCNA Recombinant Rabbit Monoclonal Antibody (PCNA/8696R).

Western Blot Analysis of Intestine and Skin tissue lysates of different species using PCNA Recombinant Rabbit Monoclonal Antibody (PCNA/8696R).



Formalin-fixed, paraffin-embedded human prostate stained with PCNA Recombinant Rabbit Monoclonal Antibody (PCNA/8696R). Inset: PBS instead of primary antibody; secondary only negative control.

Specificity & Comments

Recognizes a non-histone protein of 36kDa, which is identified as proliferating cell nuclear antigen (PCNA). It is also known as cyclin or polymerase delta auxiliary protein. Elevated expression of PCNA/cyclin has been shown in the nucleus during late G1 phase immediately before the onset of DNA synthesis, becoming maximal during S-phase and declining during G2 and M phases. This MAb is excellent for multiple applications.

Supplied As

200ug/ml of Ab produced in a mammalian-based expression system. Prepared in 10mM PBS with 0.05% BSA & 0.05% azide. Also available WITHOUT BSA & azide at 1.0mg/ml.

Storage and Stability

Antibody with azide - store at 2 to 8 °C. Antibody without azide - store at -20 to -80 °C. Antibody is stable for 24 months. Non-hazardous. No MSDS required.

Limitations and Warranty

This antibody is available for research use only and is not approved for use in diagnosis. There are no warranties, expressed or implied, which extend beyond this description. Company is not liable for any personal injury or economic loss resulting from this product.