

## Recombinant Cytokeratin 17 (CK17) (Basal Epithelial Marker) Antibody

Rabbit Monoclonal Antibody [Clone KRT17/8346R]

Catalog No	Format	Size
3872-RBM7-P0	Purified Ab with BSA and Azide at 200ug/ml	20 ug
3872-RBM7-P1	Purified Ab with BSA and Azide at 200ug/ml	100 ug
3872-RBM7-P1ABX	Purified Ab WITHOUT BSA and Azide at 1.0mg/ml	100 ug

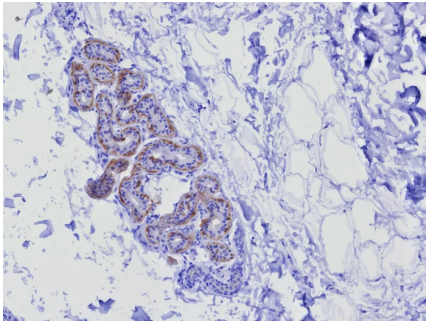
Applications	Tested Dillution	Note
Immunohistochemistry (IHC)	1-2ug/ml	30 min at RT. Staining of formalin-fixed tissues requires heating tissue sections in 10mM Tris with 1mM EDTA, pH 9.0, for 45 min at 95°C followed by cooling at RT for 20 minutes

### Product Details

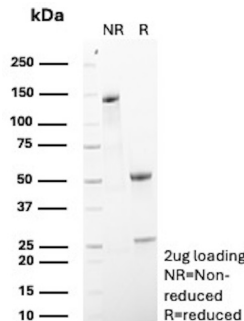
<b>Clone</b>	KRT17/8346R
<b>Gene Name</b>	KRT17
<b>Immunogen</b>	Recombinant fragment of human KRT17 protein (exact sequence is proprietary)
<b>Host</b>	Rabbit
<b>Clonality</b>	Monoclonal
<b>Isotype / Light Chain</b>	IgG / Kappa
<b>Mol. Weight of Antigen</b>	46kDa
<b>Cellular Localization</b>	Cytoplasm.
<b>Species Reactivity</b>	Human
<b>Positive Control</b>	bladder or cervix.   T24 cells. Human skin

\*Optimal dilution for a specific application should be determined.

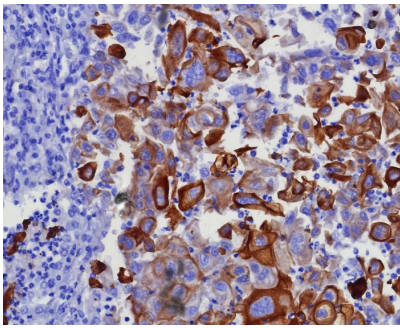
### Product Images for Recombinant Cytokeratin 17 (CK17) (Basal Epithelial Marker) Antibody



Formalin-fixed, paraffin-embedded human skin stained with CK17 Recombinant Rabbit Monoclonal Antibody (KRT17/8346R). HIER: Tris/EDTA, pH9.0, 45min. 2: HRP-polymer, 30min. DAB, 5min.



SDS-PAGE Analysis of Purified KRT17 Recombinant Rabbit Monoclonal Antibody(KRT17/8346R). Confirmation of Purity and Integrity of Antibody.



Formalin-fixed, paraffin-embedded human lung adenocarcinoma stained with CK17 Recombinant Rabbit Monoclonal Antibody (KRT17/8346R). HIER: Tris/EDTA, pH9.0, 45min. 2: HRP-polymer, 30min. DAB, 5min.

### Specificity & Comments

CK17 is normally expressed in the basal cells of complex epithelia but not in stratified or simple epithelia. Antibody to CK17 is an excellent tool to distinguish myoepithelial cells from luminal epithelium of various glands such as mammary, sweat and salivary. CK17 is expressed in epithelial cells of various origins, such as bronchial epithelial cells and skin appendages. It may be considered as epithelial stem cell marker because CK17 Ab marks basal cell differentiation. CK17 is expressed in SCLC much higher than in LADC. Eighty-five percent of the triple negative breast carcinomas immunoreact with basal cytokeratins including anti-CK17. Also important is that cases of triple negative breast carcinoma with expression of CK17 show an aggressive clinical course. Additionally, anti-CK17 and anti-MUC1 immunoreactivity represents pancreatobiliary subtype whereas anti-MUC2 and anti-CDX-2 positivity defines intestinal subtype.

### Limitations and Warranty

This antibody is available for research use only and is not approved for use in diagnosis. There are no warranties, expressed or implied, which extend beyond this description. Company is not liable for any personal injury or economic loss resulting from this product.

### Supplied As

200ug/ml of Ab purified from Bioreactor Concentrate by Protein A/G. Prepared in 10mM PBS with 0.05% BSA & 0.05% azide. Also available WITHOUT BSA & azide at 1.0mg/ml.

### Storage and Stability

Antibody with azide - store at 2 to 8°C. Antibody without azide - store at -20 to -80°C. Antibody is stable for 24 months. Non-hazardous. No MSDS required.

### Research Areas

Basal Cell Marker, Developmental Biology