

## Recombinant Beta-Parvin Antibody

Rabbit Monoclonal Antibody [Clone PARVB/8214R]

Catalog No	Format	Size
29780-RBM3-P0	Purified Ab with BSA and Azide at 200ug/ml	20 ug
29780-RBM3-P1	Purified Ab with BSA and Azide at 200ug/ml	100 ug
29780-RBM3-P1ABX	Purified Ab WITHOUT BSA and Azide at 1.0mg/ml	100 ug

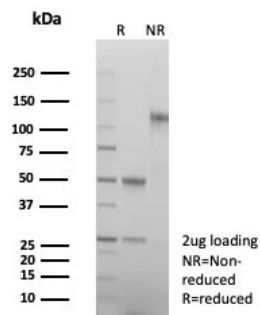
Applications	Tested Dillution	Note
Immunohistochemistry (IHC)	1-2ug/ml	30 min at RT. Staining of formalin-fixed tissues requires heating tissue sections in 10mM Tris with 1mM EDTA, pH 9.0, for 45 min at 95°C followed by cooling at RT for 20 minutes

### Product Details

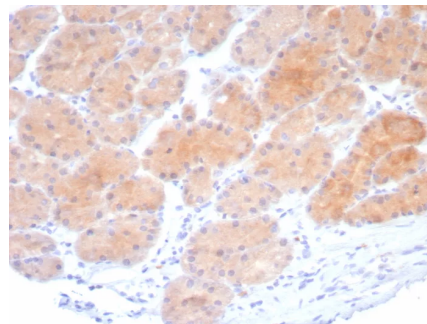
<b>Clone</b>	PARVB/8214R
<b>Gene Name</b>	PARVB
<b>Immunogen</b>	N-terminal region (residues 1-91) of human b-parvin
<b>Host</b>	Rabbit
<b>Clonality</b>	Monoclonal
<b>Isotype / Light Chain</b>	IgG / Kappa
<b>Mol. Weight of Antigen</b>	41kDa
<b>Cellular Localization</b>	Cell Surface. Cytoplasm.
<b>Species Reactivity</b>	Human
<b>Positive Control</b>	HeLa cell lysate. HeLa cells. Human stomach.

\*Optimal dilution for a specific application should be determined.

### Product Images for Recombinant Beta-Parvin Antibody



SDS-PAGE Analysis of Purified Parvin Recombinant Rabbit Monoclonal Antibody (PARVB/8214R). Confirmation of Purity and Integrity of Antibody.



Formalin-fixed, paraffin-embedded human stomach stained with Beta-Parvin Recombinant Rabbit Monoclonal Antibody (PARVB/8214R). HIER: Tris/EDTA, pH9.0, 45min. 2: HRP-polymer, 30min. DAB, 5min.

### Specificity & Comments

Beta-parvin, also known as affixin, is a focal adhesion protein belonging to a family of ILKbinding proteins that contain tandem calponin homolog domains. Along with Alpha-parvin, Beta-parvin is one of the most widely researched and characterized members of this family. These two proteins interact with the ILK kinase domain in a way that is mutually exclusive and regulates both the activity of the kinase and actin cytoskeleton adhesion. Studies have shown Beta-parvin to be downregulated within human breast cancer cells, and that its expression may influence the progression of breast cancer (Johnstone, 2008). Additional research indicates a critical role for Beta-parvin in the regulation of cardiac contractility when it is in complex with ILK (Hannigan, 2007).

### Supplied As

200ug/ml of Ab purified from Bioreactor Concentrate by Protein A/G. Prepared in 10mM PBS with 0.05% BSA & 0.05% azide. Also available WITHOUT BSA & azide at 1.0mg/ml.

### Storage and Stability

Antibody with azide - store at 2 to 8°C. Antibody without azide - store at -20 to -80°C. Antibody is stable for 24 months. Non-hazardous. No MSDS required.

## Limitations and Warranty

This antibody is available for research use only and is not approved for use in diagnosis. There are no warranties, expressed or implied, which extend beyond this description. Company is not liable for any personal injury or economic loss resulting from this product.

---