

Recombinant CD21 (Mature B-Cell & Follicular Dendritic Cell Marker) Antibody

Rabbit Monoclonal Antibody [Clone CR2/8769R]

Catalog No	Format	Size
1380-RBM19-P0	Purified Ab with BSA and Azide at 200ug/ml	20 ug
1380-RBM19-P1	Purified Ab with BSA and Azide at 200ug/ml	100 ug
1380-RBM19-P1ABX	Purified Ab WITHOUT BSA and Azide at 1.0mg/ml	100 ug

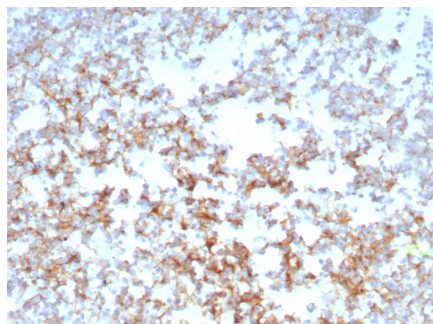
Applications	Tested Dillution	Note
Immunohistochemistry (IHC)	1-2ug/ml	30 min at RT. Staining of formalin-fixed tissues requires heating tissue sections in 10mM Tris with 1mM EDTA, pH 9.0, for 45 min at 95°C followed by cooling at RT for 20 minutes

Product Details

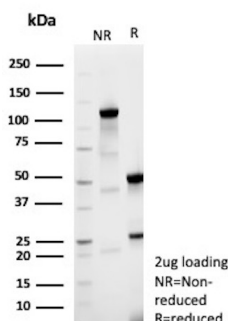
Clone	CR2/8769R
Gene Name	CR2
Immunogen	Recombinant fragment corresponding to C-terminal of human CD21 (exact sequence is proprietary)
Host	Rabbit
Clonality	Monoclonal
Isotype / Light Chain	IgG / Kappa
Mol. Weight of Antigen	140kDa
Cellular Localization	Cell surface
Species Reactivity	Human
Positive Control	Human tonsil tissue.

**Optimal dilution for a specific application should be determined.*

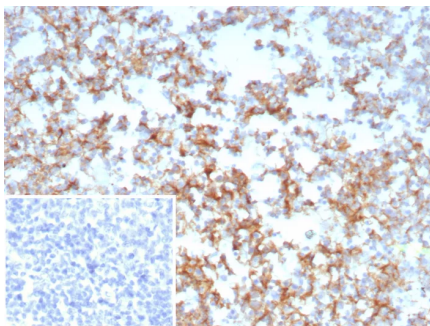
Product Images for Recombinant CD21 (Mature B-Cell & Follicular Dendritic Cell Marker) Antibody



Formalin-fixed, paraffin-embedded human tonsil stained with CD21 Recombinant Rabbit Monoclonal Antibody (CR2/8769R). HIER: Tris/EDTA, pH9.0, 45min. 2: HRP-polymer, 30min. DAB, 5min.



SDS-PAGE Analysis of Purified CD35 Recombinant Rabbit Monoclonal Antibody (CR2/8769R). Confirmation of Purity and Integrity of Antibody.



Formalin-fixed, paraffin-embedded human tonsil stained with CD21 Recombinant Rabbit Monoclonal Antibody (CR2/8769R). Inset: PBS instead of primary antibody; secondary only negative control.

Specificity & Comments

CD21 also known as complement C3d receptor, Epstein-Barr virus receptor, and complement receptor type 2 (CR2), is a protein that in humans is encoded by the CR2 gene. This protein is involved in the complement system. It binds to iC3b (inactive derivative of C3b), C3dg, or C3d. B cells have CR2 receptors on their surfaces, allowing the complement system to play a role in B-cell activation and maturation. It is expressed by follicular dendritic cells (FDC) and mature B cells, as well as by several types of epithelial cells. CD21 is useful in the identification of follicular dendritic cell matrix found in normal lymph node and tonsillar tissue, and also useful in identifying abnormal.

Supplied As

200ug/ml of Ab purified from Bioreactor Concentrate by Protein A/G. Prepared in 10mM PBS with 0.05% BSA & 0.05% azide. Also available WITHOUT BSA & azide at 1.0mg/ml.

Storage and Stability

Antibody with azide - store at 2 to 8°C. Antibody without azide - store at -20 to -80°C. Antibody is stable for 24 months. Non-hazardous. No MSDS required.

Research Areas

Immunology, B Cell Markers, Complement System, Dendritic Cell Marker

Limitations and Warranty

This antibody is available for research use only and is not approved for use in diagnosis. There are no warranties, expressed or implied, which extend beyond this description. Company is not liable for any personal injury or economic loss resulting from this product.