

Recombinant TTF-1 / NKX2.1 (Thyroid & Lung Epithelial Marker) Antibody

Rabbit Monoclonal Antibody [Clone TTF1/8143R]

| Catalog No | Format | Size |
|------------------|---|--------|
| 7080-RBM13-P0 | Purified Ab with BSA and Azide at 200ug/ml | 20 ug |
| 7080-RBM13-P1 | Purified Ab with BSA and Azide at 200ug/ml | 100 ug |
| 7080-RBM13-P1ABX | Purified Ab WITHOUT BSA and Azide at 1.0mg/ml | 100 ug |

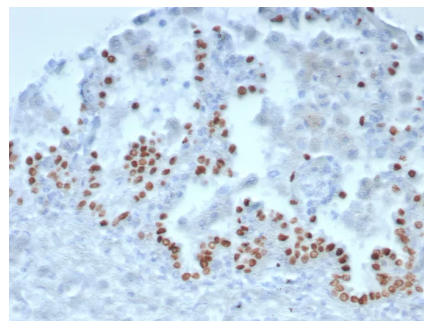
| Applications | Tested Dillution | Note |
|----------------------------|------------------|---|
| Immunohistochemistry (IHC) | 1-2ug/ml | 30 min at RT. Staining of formalin-fixed tissues requires heating tissue sections in 10mM Tris with 1mM EDTA, pH 9.0, for 45 min at 95°C followed by cooling at RT for 20 minutes |

Product Details

| | |
|------------------------|--|
| Clone | TTF1/8143R |
| Gene Name | NKX2-1 |
| Immunogen | Recombinant full-length human NKX2-1 (TTF-1) protein |
| Host | Rabbit |
| Clonality | Monoclonal |
| Isotype / Light Chain | IgG / Kappa |
| Mol. Weight of Antigen | 40kDa |
| Cellular Localization | Nucleus. |
| Species Reactivity | Dog, Human |
| Positive Control | Normal thyroid or lung. |

**Optimal dilution for a specific application should be determined.*

Product Images for Recombinant TTF-1 / NKX2.1 (Thyroid & Lung Epithelial Marker) Antibody



SDS-PAGE Analysis of Purified Homeobox protein Nkx-2.1 Recombinant Rabbit Monoclonal Antibody (TTF1/8143R). Confirmation of Purity and Integrity of Antibody.

Formalin-fixed, paraffin-embedded human lung stained with TTF-1 Recombinant Rabbit Monoclonal Antibody (TTF1/8143R). HIER: Tris/EDTA, pH9.0, 45min. 2°C: HRP-polymer, 30min. DAB, 5min.

Specificity & Comments

Recognizes a protein of 40kDa, identified as Thyroid transcription factor-1 (TTF-1). TTF-1 is a member of the NKx2 family of homeodomain transcription factors. It is expressed in epithelial cells of the thyroid gland and the lung. Nuclei from liver, stomach, pancreas, small intestine, colon, kidney, breast, skin, testes, pituitary, prostate, and adrenal glands are unreactive. Anti-TTF-1 is useful in differentiating primary adenocarcinoma of the lung from metastatic carcinomas originating in the breast, mediastinal germ cell tumors, and malignant mesothelioma. It can also be used to differentiate small cell lung carcinoma from lymphoid infiltrates. Loss of TTF-1 expression in non-small cell lung carcinoma has been associated with aggressive behavior of such neoplasms. TTF-1 reactivity is also seen in thyroid malignancies.

Limitations and Warranty

This antibody is available for research use only and is not approved for use in diagnosis. There are no warranties, expressed or implied, which extend beyond this description. Company is not liable for any personal injury or economic loss resulting from this product.

Supplied As

200ug/ml of Ab purified from Bioreactor Concentrate by Protein A/G. Prepared in 10mM PBS with 0.05% BSA & 0.05% azide. Also available WITHOUT BSA & azide at 1.0mg/ml.

Storage and Stability

Antibody with azide - store at 2 to 8°C. Antibody without azide - store at -20 to -80°C. Antibody is stable for 24 months. Non-hazardous. No MSDS required.

Research Areas

Neuroscience
