

Recombinant Thrombomodulin / CD141 (Endothelial Cell Marker) Antibody

Rabbit Monoclonal Antibody [Clone THBD/8188R]

Catalog No	Format	Size
7056-RBM5-P0	Purified Ab with BSA and Azide at 200ug/ml	20 ug
7056-RBM5-P1	Purified Ab with BSA and Azide at 200ug/ml	100 ug
7056-RBM5-P1ABX	Purified Ab WITHOUT BSA and Azide at 1.0mg/ml	100 ug

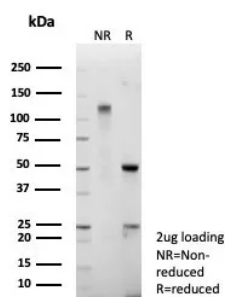
Applications	Tested Dillution	Note
Immunohistochemistry (IHC)	1-2ug/ml	30 min at RT. Staining of formalin-fixed tissues requires heating tissue sections in 10mM Tris with 1mM EDTA, pH 9.0, for 45 min at 95°C followed by cooling at RT for 20 minutes
Western Blot (WB)	2-4ug/ml	

Product Details

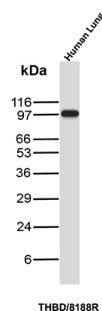
Clone	THBD/8188R
Gene Name	THBD
Immunogen	Recombinant full-length human Thrombomodulin (CD141) protein
Host	Rabbit
Clonality	Monoclonal
Isotype / Light Chain	IgG / Kappa
Mol. Weight of Antigen	~100kDa
Cellular Localization	Cell Surface. Cytoplasm.
Species Reactivity	Human
Positive Control	Angiosarcoma Bladder or Cervical Carcinoma. Placenta, Lung

**Optimal dilution for a specific application should be determined.*

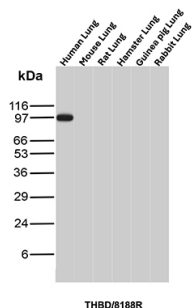
Product Images for Recombinant Thrombomodulin / CD141 (Endothelial Cell Marker) Antibody



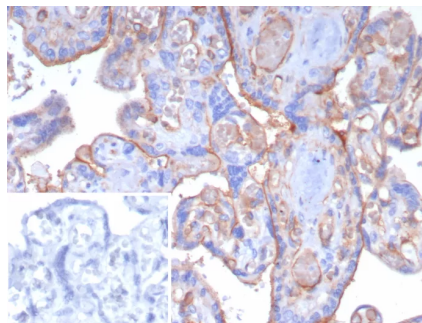
SDS-PAGE Analysis of Purified Thrombomodulin Recombinant Rabbit Monoclonal (THBD/8188R). Confirmation of Purity and Integrity of Antibody.



Western blot analysis of Human Lung tissue lysate using Thrombomodulin Rabbit Recombinant Monoclonal Antibody (THBD/8188R).



Western blot analysis of Lung tissue lysates of different species using Thrombomodulin Rabbit Recombinant Monoclonal Antibody (THBD/8188R).



Formalin-fixed, paraffin-embedded human placenta stained with Thrombomodulin Recombinant Rabbit Monoclonal Antibody (THBD/8188R). Inset: PBS instead of primary antibody; secondary only negative control.

Specificity & Comments

It recognizes a protein of 75kDa, identified as Thrombomodulin. Thrombomodulin is a transmembrane glycoprotein with natural anticoagulant properties. It is normally expressed by a restricted number of cells, such as endothelial and mesothelial cells. In addition, synovial lining and syncytio-trophoblasts of placenta also express thrombomodulin. This protein is present in almost all of benign vascular tumors and majority of malignant vascular tumors (Kaposi's sarcoma, angiosarcoma, and epithelioid hemangioendothelioma). Hence, anti-thrombomodulin serves as a sensitive marker for lymphatic endothelial cells and their tumors. Recently, thrombomodulin antibody has been used for mesothelial cells and malignant mesotheliomas.

Supplied As

200ug/ml of Ab purified from Bioreactor Concentrate by Protein A/G. Prepared in 10mM PBS with 0.05% BSA & 0.05% azide. Also available WITHOUT BSA & azide at 1.0mg/ml.

Storage and Stability

Antibody with azide - store at 2 to 8°C. Antibody without azide - store at -20 to -80°C. Antibody is stable for 24 months. Non-hazardous. No MSDS required.

Research Areas

Cardiovascular, Endothelial Cell Marker

Limitations and Warranty

This antibody is available for research use only and is not approved for use in diagnosis. There are no warranties, expressed or implied, which extend beyond this description. Company is not liable for any personal injury or economic loss resulting from this product.