

## Recombinant ACE2 / Angiotensin I Converting Enzyme 2 Antibody

Rabbit Monoclonal Antibody [Clone ACE2/8748R]

Catalog No	Format	Size
59272-RBM6-P0	Purified Ab with BSA and Azide at 200ug/ml	20 ug
59272-RBM6-P1	Purified Ab with BSA and Azide at 200ug/ml	100 ug
59272-RBM6-P1ABX	Purified Ab WITHOUT BSA and Azide at 1.0mg/ml	100 ug

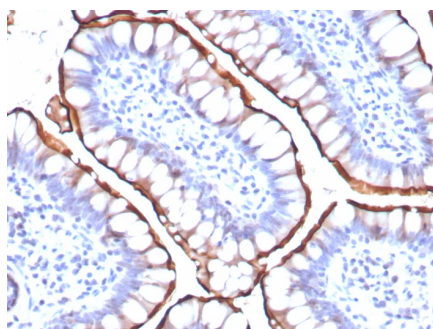
Applications	Tested Dillution	Note
Immunohistochemistry (IHC)	1-2ug/ml	30 min at RT. Staining of formalin-fixed tissues requires heating tissue sections in 10mM Tris with 1mM EDTA, pH 9.0, for 45 min at 95°C followed by cooling at RT for 20 minutes
Western Blot (WB)	2-4ug/ml	

### Product Details

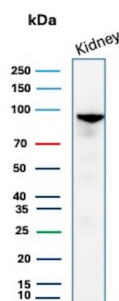
<b>Clone</b>	ACE2/8748R
<b>Gene Name</b>	ACE2
<b>Immunogen</b>	Recombinant fragment (around aa705-805) of human ACE2 (exact sequence is proprietary)
<b>Host</b>	Rabbit
<b>Clonality</b>	Monoclonal
<b>Isotype / Light Chain</b>	IgG / Kappa
<b>Mol. Weight of Antigen</b>	92kDa
<b>Cellular Localization</b>	Cell membrane, Secreted
<b>Species Reactivity</b>	Guinea Pig, Hamster, Human
<b>Positive Control</b>	Human heart, kidney, testis or small intestine.

\*Optimal dilution for a specific application should be determined.

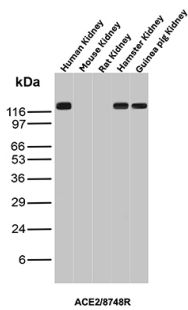
### Product Images for Recombinant ACE2 / Angiotensin I Converting Enzyme 2 Antibody



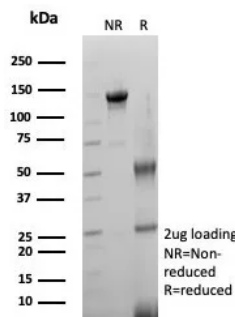
IHC analysis of formalin-fixed, paraffin-embedded human small intestine. Stained using ACE2/8748R at 2ug/ml in PBS for 30min RT. HIER: Tris/EDTA, pH9.0, 45min. 2°C: HRP-polymer, 30min. DAB, 5min.



Western Blot Analysis of human kidney lysate using ACE2 / Angiotensin I Converting Enzyme 2 Rabbit Recombinant Monoclonal Antibody (ACE2/8748R).



Western blot analysis of Human Kidney, Mouse Kidney, Rat Kidney, Hamster Kidney and Guinea pig Kidney tissue lysates using ACE2 / Angiotensin I Converting Enzyme 2 Rabbit Recombinant Monoclonal Antibody (ACE2/8748R).



SDS-PAGE Analysis Purified ACE2 / CD143 Rabbit Monoclonal Antibody (ACE2/8748R). Confirmation of Integrity and Purity of Antibody.

### Specificity & Comments

Carboxypeptidase which converts angiotensin I to angiotensin 1-9, a peptide of unknown function, and angiotensin II to angiotensin 1-7, a vasodilator. Also able to hydrolyze apelin-13 and dynorphin-13 with high efficiency. By cleavage of angiotensin II, may be an important regulator of heart function. By cleavage of angiotensin II, may also have a protective role in acute lung injury. Plays an important role in amino acid transport by acting as binding partner of amino acid transporter SL6A19 in intestine, regulating trafficking, expression on the cell surface, and its catalytic activity. In case of human coronaviruses SARS and HCoV-NL63 infections, serve as functional receptor for the spike glycoprotein of both coronaviruses.

### Limitations and Warranty

This antibody is available for research use only and is not approved for use in diagnosis. There are no warranties, expressed or implied, which extend beyond this description. Company is not liable for any personal injury or economic loss resulting from this product.

### Supplied As

200ug/ml of Ab produced in CHO cell mammalian-based expression system. Prepared in 10mM PBS with 0.05% BSA & 0.05% azide. Also available WITHOUT BSA & azide at 1.0mg/ml.

### Storage and Stability

Antibody with azide - store at 2 to 8°C. Antibody without azide - store at -20 to -80°C. Antibody is stable for 24 months. Non-hazardous. No MSDS required.

### Research Areas

Cardiovascular, Infectious Disease