

Recombinant Mesothelin (Mesothelial Marker) Antibody

Mouse Monoclonal Antibody [Clone rMSLN/8764]

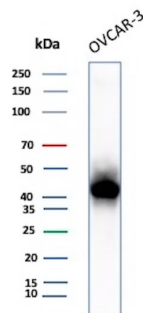
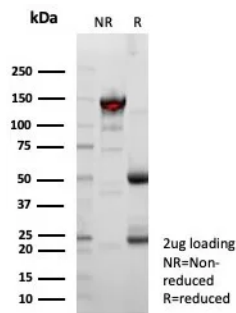
Catalog No	Format	Size
10232-MSM16-P0	Purified Ab with BSA and Azide at 200ug/ml	20 ug
10232-MSM16-P1	Purified Ab with BSA and Azide at 200ug/ml	100 ug
10232-MSM16-P1ABX	Purified Ab WITHOUT BSA and Azide at 1.0mg/ml	100 ug

Applications	Tested Dillution	Note
Immunohistochemistry (IHC)	1-2ug/ml	30 min at RT. Staining of formalin-fixed tissues requires heating tissue sections in 10mM Tris with 1mM EDTA, pH 9.0, for 45 min at 95°C followed by cooling at RT for 20 minutes
Western Blot (WB)	2-4ug/ml	

Product Details	
Clone	rMSLN/8764
Gene Name	MSLN
Immunogen	Recombinant fragment (around aa 273-407) of human Mesothelin (MSLN) protein (exact sequence is proprietary)
Host	Mouse
Clonality	Monoclonal
Isotype / Light Chain	IgG2b / Kappa
Mol. Weight of Antigen	40kDa (Mature form); 69kDa (Precursor)
Cellular Localization	Cell surface. Secreted.
Species Reactivity	Human
Positive Control	OVCAR-3, CAPAN-2 or HeLa cells. Lung Mesothelioma.

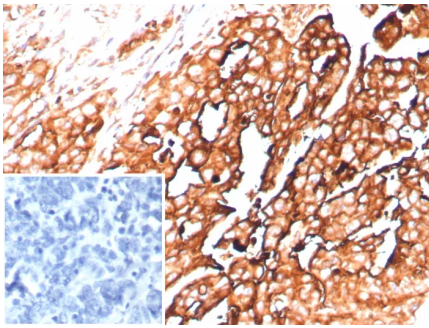
*Optimal dilution for a specific application should be determined.

Product Images for Recombinant Mesothelin (Mesothelial Marker) Antibody



SDS-PAGE Analysis of Purified Mesothelin Recombinant Mouse Monoclonal (rMSLN/8764). Confirmation of Purity and Integrity of Antibody.

Western Blot Analysis of OVCAR-3 lysate using Mesothelin Recombinant Mouse Monoclonal Antibody (rMSLN/8764).



Formalin-fixed, paraffin-embedded human ovarian cancer stained with Mesothelin Recombinant Mouse Monoclonal (rMSLN/8764). Inset: PBS instead of primary antibody; secondary only negative control.

Specificity & Comments

Mesothelin is a 40kDa glycosyl-phosphatidylinositol-anchored glycoprotein cleaved from a 69kDa precursor protein. Mesothelin immunoreactivity is high in cancers of the ovary (serous papillary, endometrioid and undifferentiated) and pancreas, with less frequent staining seen in adenocarcinomas of the endometrium, lung and stomach/esophagus. Mesothelin is one of the most sensitive markers for mesothelioma.

Supplied As

200ug/ml of Ab purified from Bioreactor Concentrate by Protein A/G. Prepared in 10mM PBS with 0.05% BSA & 0.05% azide. Also available WITHOUT BSA & azide at 1.0mg/ml.

Storage and Stability

Antibody with azide - store at 2 to 8°C. Antibody without azide - store at -20 to -80°C. Antibody is stable for 24 months. Non-hazardous. No MSDS required.

Limitations and Warranty

This antibody is available for research use only and is not approved for use in diagnosis. There are no warranties, expressed or implied, which extend beyond this description. Company is not liable for any personal injury or economic loss resulting from this product.