

Recombinant PAPP-A / Pappalysin-1 (Marker of Atherosclerosis and Aneuploid Fetus) Antibody

Rabbit Monoclonal Antibody [Clone PAPP/8804R]

Catalog No	Format	Size
5069-RBM16-P0	Purified Ab with BSA and Azide at 200ug/ml	20 ug
5069-RBM16-P1	Purified Ab with BSA and Azide at 200ug/ml	100 ug
5069-RBM16-P1ABX	Purified Ab WITHOUT BSA or Azide at 1.0mg/ml	100 ug

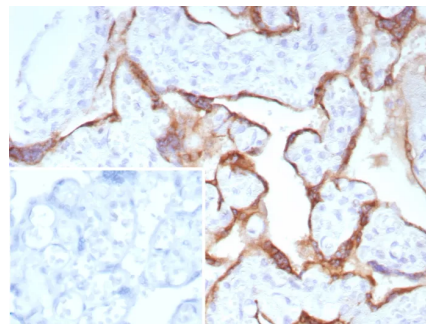
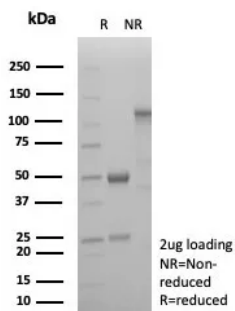
Applications	Tested Dillution	Note
Immunohistochemistry (IHC)	1-2ug/ml	30 min at RT. Staining of formalin-fixed tissues requires heating tissue sections in 10mM Tris with 1mM EDTA, pH 9.0, for 45 min at 95°C followed by cooling at RT for 20 minutes
Western Blot (WB)	2-4ug/ml	

Product Details

Clone	PAPP/8804R
Immunogen	Recombinant fragment (around aa351-523) of the human PAPP-A (Pregnancy Associated Plasma Protein A) protein (exact sequence is proprietary)
Host	Rabbit
Clonality	Monoclonal
Isotype / Light Chain	IgG / Kappa
Mol. Weight of Antigen	180.97kDa
Cellular Localization	Secreted
Species Reactivity	Human
Positive Control	Human placenta tissue.

*Optimal dilution for a specific application should be determined.

Product Images for Recombinant PAPP-A / Pappalysin-1 (Marker of Atherosclerosis and Aneuploid Fetus) Antibody



SDS-PAGE Analysis of Purified PAPP-A Recombinant Rabbit Monoclonal Antibody (PAPP/8804R). Confirmation of Purity and Integrity of Antibody.

Formalin-fixed, paraffin-embedded human placenta stained with PAPP-A Recombinant Rabbit Monoclonal Antibody (PAPP/8804R). HIER: Tris/EDTA, pH9.0, 45min. 2°C: HRP-polymer, 30min. DAB, 5min.

Specificity & Comments

Pregnancy Associated Plasma Protein (PAPP-A) is found in maternal blood that increases as pregnancy progresses, although it is not specific to pregnancy. It is principally expressed in the syncytiotrophoblast of the placenta, which forms the main source of circulating maternal PAPP-A. It cleaves insulin-like growth factor binding proteins (IGFBPs), IGFBP-4 and IGFBP-5. IGFBP-4 cleavage is enhanced significantly in the presence of bound IGF, whereas IGFBP-5 cleavage is inhibited slightly by IGF presence. It is thought to be involved in local proliferative processes such as wound healing and bone remodeling. Low plasma level of this protein has been suggested as a biochemical marker for pregnancies with aneuploid fetuses. PAPP-A has also been suggested as a potential biomarker of acute myocardial infarction and Coronary Artery Disease (CAD).

Limitations and Warranty

This antibody is available for research use only and is not approved for use in diagnosis. There are no warranties, expressed or implied, which extend beyond this description. Company is not liable for any personal injury or economic loss resulting from this product.

Supplied As

200ug/ml of Ab produced in a mammalian-based expression system. Prepared in 10mM PBS with 0.05% BSA & 0.05% azide. Also available WITHOUT BSA & azide at 1.0mg/ml.

Storage and Stability

Antibody with azide - store at 2 to 8 °C. Antibody without azide - store at -20 to -80 °C. Antibody is stable for 24 months. Non-hazardous. No MSDS required.
