

Recombinant Prostate Specific Acid Phosphatase (PSAP) Antibody

Rabbit Monoclonal Antibody [Clone ACP/8409R]

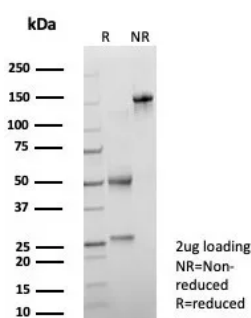
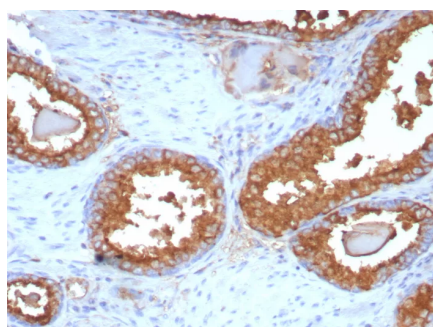
Catalog No	Format	Size
55-RBM7-P0	Purified Ab with BSA and Azide	200ug/ml
55-RBM7-P1	Purified Ab with BSA and Azide	200ug/ml
55-RBM7-P1ABX	Purified Ab WITHOUT BSA and Azide	1.0mg/ml

Applications	Tested Dillution
Immunohistochemistry (IHC)	1-2ug/ml

Product Details	
Clone	ACPP/8409R
Gene Name	ACP3
Immunogen	Recombinant fragment (around aa200-400) of human ACP3 (exact sequence is proprietary)
Host	Rabbit
Clonality	Monoclonal
Isotype / Light Chain	IgG / Kappa
Mol. Weight of Antigen	45kDa
Cellular Localization	Cytoplasm.
Species Reactivity	Human
Positive Control	PC12 cells. Normal prostate or prostate carcinoma tissue.

**Optimal dilution for a specific application should be determined.*

Product Images for Recombinant Prostate Specific Acid Phosphatase (PSAP) Antibody



Formalin-fixed, paraffin-embedded human prostate carcinoma stained with PSAP Recombinant Rabbit Monoclonal Antibody (ACPP/8409R). HIER: Tris/EDTA, pH9.0, 45min. 2: HRP-polymer, 30min. DAB, 5min.

SDS-PAGE Analysis of Purified PSAP Recombinant Rabbit Monoclonal Antibody (ACPP/8409R). Confirmation of Purity and Integrity of Antibody.

Specificity & Comments

Prostatic Acid Phosphatase (PSAP or PAP) is a member of the histidine acid phosphatase family. It is a non-specific phosphatase that is capable of dephosphorylating tyrosine residues as well as phospholipids under mildly acidic conditions. Prostatic specific acid phosphatase (PSAP) is involved in prostate epithelial differentiation. It is highly expressed in prostate, primary and metastatic carcinoma of the prostate. This marker may be helpful in pinpointing the site of origin in cases of metastatic carcinoma of the prostate, and is considered a more sensitive marker than PSA.

Research Areas

Immunology

Known Applications & Suggested Dilutions

Immunohistochemistry (Formalin-fixed) (1-2ug/ml for 30 minutes at RT),(Staining of formalin-fixed tissues requires heating tissue sections in 10mM Tris with 1mM EDTA, pH 9.0, for 45 min at 95°C followed by cooling at RT for 20 minutes),Optimal dilution for a specific application should be determined.

Limitations and Warranty

This antibody is available for research use only and is not approved for use in diagnosis.

There are no warranties, expressed or implied, which extend beyond this description. Company is not liable for any personal injury or economic loss resulting from this product.

Supplied As

200ug/ml of Ab purified from Bioreactor Concentrate by Protein A/G. Prepared in 10mM PBS with 0.05% BSA & 0.05% azide. Also available WITHOUT BSA & azide at 1.0mg/ml.

Storage and Stability

Antibody with azide - store at 2 to 8°C. Antibody without azide - store at -20 to -80°C. Antibody is stable for 24 months. Non-hazardous. No MSDS required.
