

## Recombinant PD-L1 / PDCD1LG1 / CD274 / B7-H1 (Cancer Immunotherapy Target) Antibody

Rabbit Monoclonal Antibody [Clone PDL1/8222R]

Catalog No	Format	Size
29126-RBM22-P0	Purified Ab with BSA and Azide at 200ug/ml	20 ug
29126-RBM22-P1	Purified Ab with BSA and Azide at 200ug/ml	100 ug
29126-RBM22-P1ABX	Purified Ab WITHOUT BSA and Azide at 1.0mg/ml	100 ug

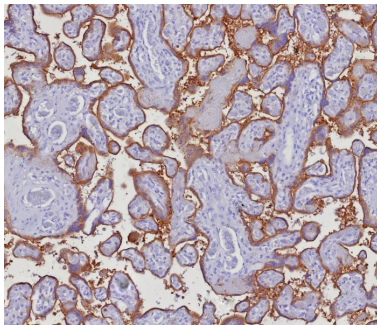
Applications	Tested Dillution	Note
Immunohistochemistry (IHC)	1-2ug/ml	30 min at RT. Staining of formalin-fixed tissues requires heating tissue sections in 10mM Tris with 1mM EDTA, pH 9.0, for 45 min at 95°C followed by cooling at RT for 20 minutes
Western Blot (WB)	2-4ug/ml	

### Product Details

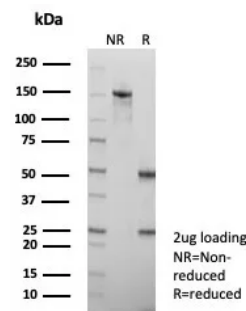
<b>Clone</b>	PDL1/8222R
<b>Gene Name</b>	CD274
<b>Immunogen</b>	Recombinant fragment (around aa190-290) of human CD274 protein (exact sequence is proprietary)
<b>Host</b>	Rabbit
<b>Clonality</b>	Monoclonal
<b>Isotype / Light Chain</b>	IgG / Kappa
<b>Mol. Weight of Antigen</b>	37-50kDa
<b>Cellular Localization</b>	Cell Surface. Cytoplasm.
<b>Species Reactivity</b>	Human
<b>Positive Control</b>	Human placenta spleen or tonsil tissue. Kidney, lung, Raji

\*Optimal dilution for a specific application should be determined.

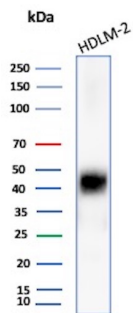
### Product Images for Recombinant PD-L1 / PDCD1LG1 / CD274 / B7-H1 (Cancer Immunotherapy Target) Antibody



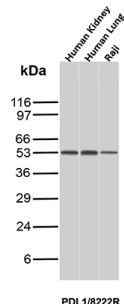
Formalin-fixed, paraffin-embedded human placenta stained with PD-L1 Recombinant Rabbit Monoclonal Antibody (PDL1/8222R). HIER: Tris/EDTA, pH9.0, 45min. 2: HRP-polymer, 30min. DAB, 5min.



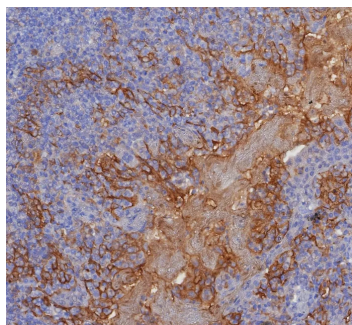
SDS-PAGE Analysis of Purified PD-L1 Recombinant Rabbit Monoclonal Antibody (PDL1/8222R). Confirmation of Purity and Integrity of Antibody.



Western Blot Analysis of HDLM-2 cell lysate using CD274 Rabbit Recombinant Monoclonal Antibody (PDL1/8222R).



Western Blot Analysis of Human Kidney, Human Lung and Raji lysate using CD274 Rabbit Recombinant Monoclonal Antibody (PDL1/8222R).



Formalin-fixed, paraffin-embedded human tonsil stained with PD-L1 Recombinant Rabbit Monoclonal Antibody (PDL1/8222R). HIER: Tris/EDTA, pH9.0, 45min. 2: HRP-polymer, 30min. DAB, 5min.

### Specificity & Comments

PD-L1 is a checkpoint regulator in immune cells, it is expressed on immune or non-hematopoietic cells. Expression of the protein is seen during pregnancy where it has a role in suppressing the immune system. PD-L1 induces an inhibitory signal in activated T-cells and promotes T-cell apoptosis. It is overexpressed in a number of different cancers where it is believed to play a significant role in the cancer's ability to evade the immune system.

### Supplied As

200ug/ml of Ab purified from Bioreactor Concentrate by Protein A/G. Prepared in 10mM PBS with 0.05% BSA & 0.05% azide. Also available WITHOUT BSA & azide at 1.0mg/ml.

### Storage and Stability

Antibody with azide - store at 2 to 8°C. Antibody without azide - store at -20 to -80°C. Antibody is stable for 24 months. Non-hazardous. No MSDS required.

### Research Areas

Immunology, Mast Cell Marker, PD-1 blockade immunotherapy, Signal Transduction

### Limitations and Warranty

This antibody is available for research use only and is not approved for use in diagnosis. There are no warranties, expressed or implied, which extend beyond this description. Company is not liable for any personal injury or economic loss resulting from this product.