

Recombinant MUC1 / CA15-3 / EMA / CD227 (Epithelial Marker) Antibody

Rabbit Monoclonal Antibody [Clone MUC1/8109R]

Catalog No	Format	Size
4582-RBM34-P0	Purified Ab with BSA and Azide at 200ug/ml	20 ug
4582-RBM34-P1	Purified Ab with BSA and Azide at 200ug/ml	100 ug
4582-RBM34-P1ABX	Purified Ab WITHOUT BSA and Azide at 1.0mg/ml	100 ug

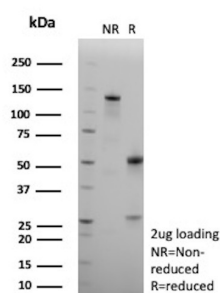
Applications	Tested Dillution	Note
Immunohistochemistry (IHC)	1-2ug/ml	30 min at RT. Staining of formalin-fixed tissues requires heating tissue sections in 10mM Tris with 1mM EDTA, pH 9.0, for 45 min at 95°C followed by cooling at RT for 20 minutes
Western Blot (WB)	2-4ug/ml	

Product Details

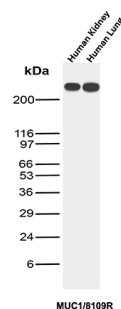
Clone	MUC1/8109R
Gene Name	MUC1
Immunogen	Recombinant full-length human MUC1 protein
Host	Rabbit
Clonality	Monoclonal
Isotype / Light Chain	IgG / Kappa
Mol. Weight of Antigen	265-400kDa
Cellular Localization	Cytoplasm. Cell surface.
Species Reactivity	Human
Positive Control	colon MCF-7 or MDA-231 cells. Human breast ovarian or endometrial carcinoma. Kidney, Lung.

*Optimal dilution for a specific application should be determined.

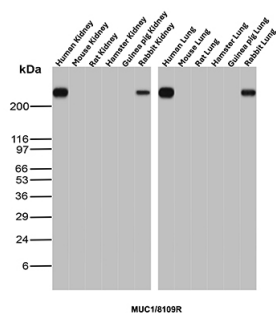
Product Images for Recombinant MUC1 / CA15-3 / EMA / CD227 (Epithelial Marker) Antibody



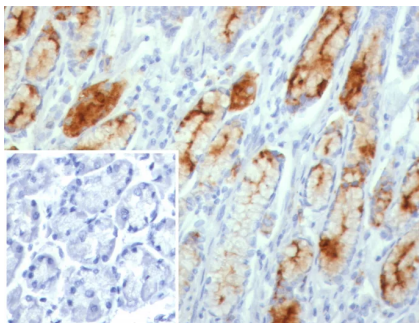
SDS-PAGE Analysis of Purified Mucin-1 | Mucin-1 subunit alpha | Mucin-1 subunit beta Recombinant Rabbit Monoclonal Antibody (MUC1/8109R). Confirmation of Purity and Integrity of Antibody.



Western Blot Analysis of Human kidney and Human Lung tissue lysates using MUC-1 Recombinant Rabbit Monoclonal Antibody (MUC1/8109R).



Western Blot Analysis of kidney and Lung tissue lysates of different species using MUC-1 Recombinant Rabbit Monoclonal Antibody (MUC1/8109R).



Formalin-fixed, paraffin-embedded human stomach stained with MUC1 Recombinant Rabbit Monoclonal Antibody (MUC1/8109R). Inset: PBS instead of primary antibody; secondary only negative control.

Specificity & Comments

In Western blotting, it recognizes proteins in MW range of 265-400kDa, identified as different glycoforms of EMA. This MAb reacts with the DTRP epitope in the tandem repeats. The alpha subunit has cell adhesive properties. It can act both as an adhesion and an anti-adhesion protein. EMA may provide a protective layer on epithelial cells against bacterial and enzyme attack. The beta subunit contains a C-terminal domain, which is involved in cell signaling, through phosphorylations and protein-protein interactions. In immunohistochemical assays, it superbly stains routine formalin/paraffin carcinoma tissues. Antibody to EMA is useful as a pan-epithelial marker for detecting early metastatic loci of carcinoma in bone marrow or liver.

Limitations and Warranty

This antibody is available for research use only and is not approved for use in diagnosis. There are no warranties, expressed or implied, which extend beyond this description. Company is not liable for any personal injury or economic loss resulting from this product.

Supplied As

200ug/ml of Ab purified from Bioreactor Concentrate by Protein A/G. Prepared in 10mM PBS with 0.05% BSA & 0.05% azide. Also available WITHOUT BSA & azide at 1.0mg/ml.

Storage and Stability

Antibody with azide - store at 2 to 8°C. Antibody without azide - store at -20 to -80°C. Antibody is stable for 24 months. Non-hazardous. No MSDS required.

Research Areas

Immunology, Cytokine Signaling, Infectious Disease